



jordan fishwick

26 Heatherfield Court, SK9 2QE
Guide Price £99,950



Heatherfield Court Wilmslow

Guide Price £99,950




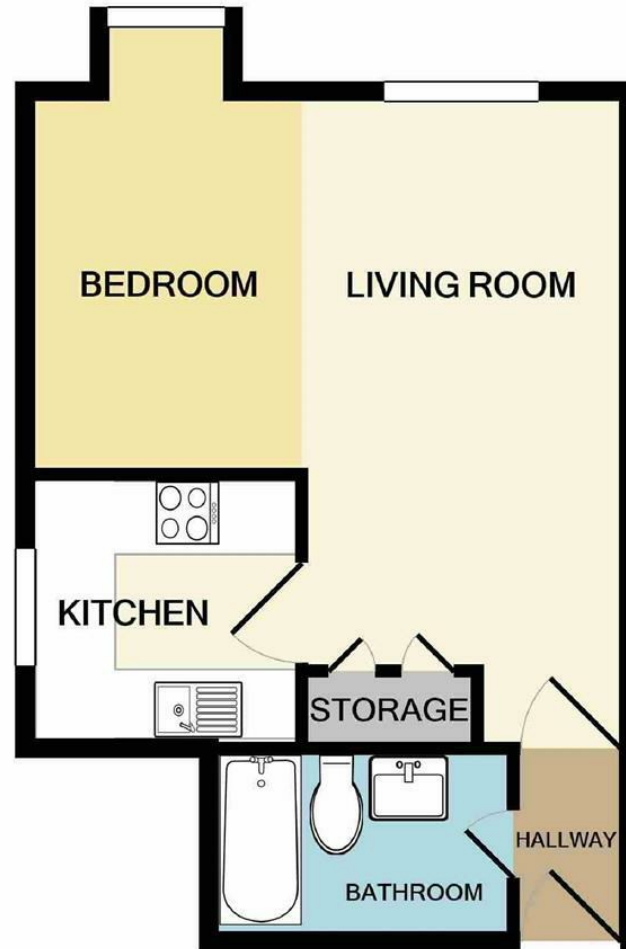
This delightful first floor studio apartment is located in an extremely popular location close to the A34 ideal for FIRST TIME BUYERS OR AN INVESTMENT LANDLORD. Local amenities are a short walk away from the studio apartment and it is also close to the A34 for access to local motorways and Manchester Airport. The apartment comprises briefly: Communal entrance hallway, private entrance hallway, open plan living/dining/bedroom area, kitchen with integrated appliances, and an attractive three piece bathroom suite. The development is surrounded by well maintained communal gardens and also offers off road parking. Viewings highly recommended.



- Studio Apartment
- First Floor
- Ideal First Time Buy
- Popular Location
- Close to Local Amenities
- Off Road Parking
- Communal Garden
- Viewing Recommended



Energy Efficiency Rating		
	Current	Potential
<i>Very energy efficient - lower running costs</i>		
(92 plus) A		
(81-91) B		
(69-80) C		75
(55-68) D	68	
(39-54) E		
(21-38) F		
(1-20) G		
<i>Not energy efficient - higher running costs</i>		
England & Wales	EU Directive 2002/91/EC 	



Measurements are approximate. Not to scale. Illustrative purposes only
Made with Metropix ©2020



These particulars are believed to be accurate but they are not guaranteed and do not form a contract. Neither Jordan Fishwick nor the vendor or lessor accept any responsibility in respect of these particulars, which are not intended to be statements or representations of fact and any intending purchaser or lessee must satisfy himself by inspection or otherwise as to the correctness of each of the statements contained in these particulars. Any floorplans on this brochure are for illustrative purposes only and are not necessarily to scale.

Offices at: Chorlton, Didsbury, Disley, Hale, Glossop, Macclesfield, Manchester Deansgate, Manchester Whitworth Street, New Mills, Sale, Wilmslow and Withington

36-38 Alderley Road, Wilmslow, Cheshire, SK9 1JX

01625 532000

wilmslow@jordanfishwick.co.uk

www.jordanfishwick.co.uk