



*jordan fishwick*

19 Alma Lane, SK9 5EY  
Guide Price £445,000

# Alma Lane WILMSLOW SK9 5EY

Guide Price £445,000



**\*\* NO ONWARD CHAIN \*\*** This charming two bedroom semi-detached cottage with its sleek and stylish interior has been beautifully modernised. Having undergone a recent refurbishment the current owners have created a most splendid home of considerable merit. The stunning interior comprises in brief: entrance hallway, spacious bay fronted living room, stylish re-fitted kitchen extending into dining area. The ground floor accommodation concludes with a downstairs wc. The first floor comprises two well proportioned double bedrooms and a stylish family bathroom. Externally the property is privileged with a generously proportioned rear garden which is mainly laid to lawn and enclosed by timber panelled fencing. To the front of the property is a paved driveway with parking for one vehicle. Viewings essential to fully appreciate.



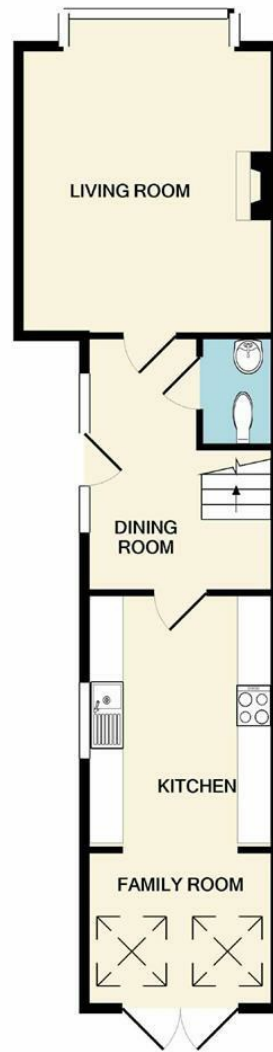


- Charming Cottage
- Two bedrooms
- Recently renovated
- Generous rear garden
- Stone's throw from Wilmslow centre
- Stylish interior
- No chain
- Parking on driveway

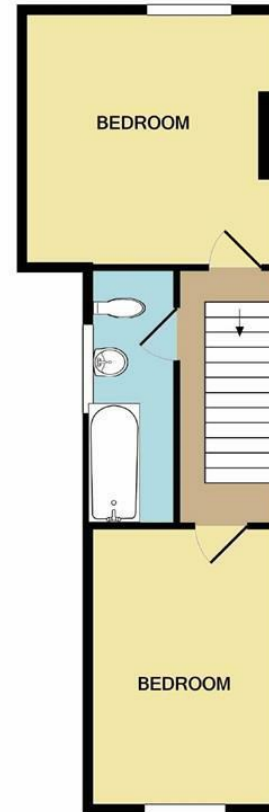


Energy Efficiency Rating		
	Current	Potential
Very energy efficient - lower running costs		
(92 plus) <b>A</b>		
(81-91) <b>B</b>		<b>77</b>
(69-80) <b>C</b>		
(55-68) <b>D</b>		
(39-54) <b>E</b>	<b>49</b>	
(21-38) <b>F</b>		
(1-20) <b>G</b>		
Not energy efficient - higher running costs		
<b>England &amp; Wales</b>	EU Directive 2002/91/EC	





GROUND FLOOR



1ST FLOOR

Measurements are approximate. Not to scale. Illustrative purposes only  
 Made with Metropix ©2021



These particulars are believed to be accurate but they are not guaranteed and do not form a contract. Neither Jordan Fishwick nor the vendor or lessor accept any responsibility in respect of these particulars, which are not intended to be statements or representations of fact and any intending purchaser or lessee must satisfy himself by inspection or otherwise as to the correctness of each of the statements contained in these particulars. Any floorplans on this brochure are for illustrative purposes only and are not necessarily to scale.

Offices at: Chorlton, Didsbury, Disley, Hale, Glossop, Macclesfield, Manchester Deansgate, Manchester Whitworth Street, New Mills, Sale, Wilmslow and Withington

36-38 Alderley Road, Wilmslow, Cheshire, SK9 1JX

01625 532000

wilmslow@jordanfishwick.co.uk

www.jordanfishwick.co.uk