

**ESTAS**  
★★★★★

**BEST IN POSTCODE  
WINNER 2025**

#customerserviceawards



**CJ** Architects Town Planning  
Environmental & Urban Design

**Plot 9 Coed Parc Rise, Off Walters Road, Bridgend, Bridgend County. CF31 4HE**

**£645,000**



**PETER MORGAN**



**Plot 9 Coed Parc Rise, Off Walters Road, Bridgend, Bridgend County. CF31 4HE**

**Main Features**

- Brand new family home in a desirable location
- Architect Certified and being sold as a design and build project
- 6 double bedrooms
- 4 bathrooms
- 3 storey accommodation
- Landscaped gardens, driveway and garage
- Situated conveniently for Bridgend Town centre and amenities. The M4 is within 2 miles (approx) At Junction 36 at Sarn
- Newbridge Playing Fields and Leisure Centre are within 1/2 mile
- Local comprehensive and primary schools are nearby
- Combi gas central heating, uPVC double glazing and much more

**General Information**

BRAND NEW' FAMILY HOME, ARCHITECT CERTIFIED AND BEING SOLD AS A DESIGN AND BUILD PROJECT. EXECUTIVE STYLE 6 DOUBLE BEDROOM, 4 BATHROOM DETACHED CONTEMPORARY HOME OCCUPYING AN INNER CORNER PLOT WITH ACCOMMODATION OVER 3 FLOORS.

The property benefits from open plan indoor/ outdoor living, 3 reception rooms, landscaped gardens, driveway and garage, combi gas central heating, uPVC double glazing and much more.

Early reservation will benefit from having choices of kitchen / interiors and will be involved in the build process from Day 1.

The development is located in a prime location at the rear of the Coed Parc "Old Library" Grade 2 listed Development. When completed Coed Parc Rise will be accessible from Walters Road. This desirable development will be set in

attractive mature grounds which were the rear gardens of the original listed library building.

Situated conveniently for Bridgend Town Centre and amenities. Ideal for public transport links, being within 1/2 mile (approx) from Intercity rail link to London Paddington from Bridgend Train station. All major bus routes are also available at Bridgend Bus station. The M4 is within 2 miles (Approx) at Junction 36 at Sarn. Newbridge Playing Fields and leisure centre are within 1/2 mile. Local comprehensive and primary schools are nearby. The Heritage Coastline is within 5 miles at Ogmore By Sea. Cardiff International Airport is within 16 miles and Cardiff City Centre is within 22 miles.

Viewing to development is strictly by appointment only.

**Maintenance Charge**

A maintenance charge will be put in place. The amount for this is to be confirmed.

**Viewings**

Strictly By Appointment Only

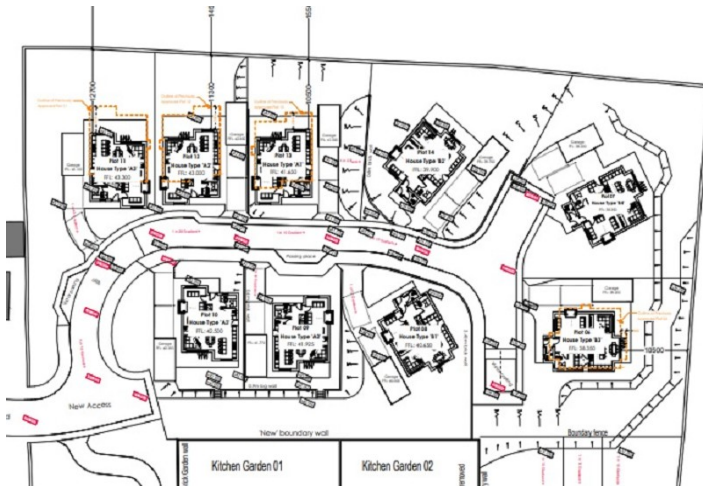
**Utilities**

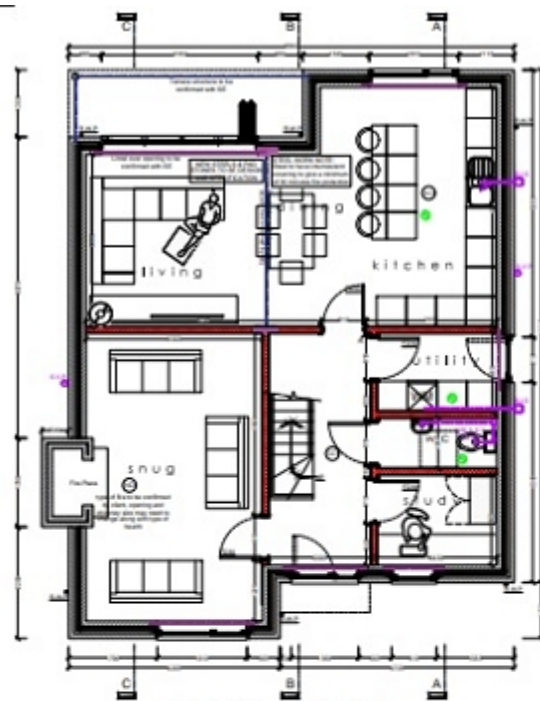
Mains electricity, mains water, mains gas, mains drainage

**Current council tax banding** Not Specified

**Current heating type** Gas

**Tenure** Freehold

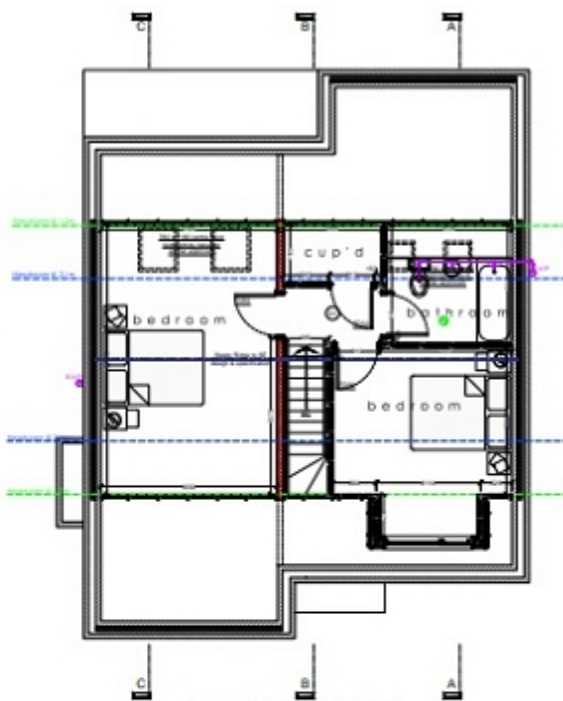




Proposed GA Ground Floor Plan  
1:50



Proposed GA First Floor Plan  
1:50



Proposed GA Second Floor Plan  
1:50

## CONSTRUCTION NOTES

### 1. GENERAL NOTES

#### 1.1. GENERAL NOTES

##### 1.1.1. GENERAL NOTES

##### 1.1.2. GENERAL NOTES

##### 1.1.3. GENERAL NOTES

##### 1.1.4. GENERAL NOTES

##### 1.1.5. GENERAL NOTES

##### 1.1.6. GENERAL NOTES

##### 1.1.7. GENERAL NOTES

##### 1.1.8. GENERAL NOTES

##### 1.1.9. GENERAL NOTES

##### 1.1.10. GENERAL NOTES

##### 1.1.11. GENERAL NOTES

##### 1.1.12. GENERAL NOTES

##### 1.1.13. GENERAL NOTES

##### 1.1.14. GENERAL NOTES

##### 1.1.15. GENERAL NOTES

##### 1.1.16. GENERAL NOTES

##### 1.1.17. GENERAL NOTES

##### 1.1.18. GENERAL NOTES

##### 1.1.19. GENERAL NOTES

##### 1.1.20. GENERAL NOTES

##### 1.1.21. GENERAL NOTES

##### 1.1.22. GENERAL NOTES

##### 1.1.23. GENERAL NOTES

##### 1.1.24. GENERAL NOTES

##### 1.1.25. GENERAL NOTES

##### 1.1.26. GENERAL NOTES

##### 1.1.27. GENERAL NOTES

##### 1.1.28. GENERAL NOTES

##### 1.1.29. GENERAL NOTES

##### 1.1.30. GENERAL NOTES

##### 1.1.31. GENERAL NOTES

##### 1.1.32. GENERAL NOTES

##### 1.1.33. GENERAL NOTES

##### 1.1.34. GENERAL NOTES

##### 1.1.35. GENERAL NOTES

## 2. MATERIALS

### 2.1. MATERIALS

#### 2.1.1. MATERIALS

##### 2.1.1.1. MATERIALS

##### 2.1.1.2. MATERIALS

##### 2.1.1.3. MATERIALS

##### 2.1.1.4. MATERIALS

##### 2.1.1.5. MATERIALS

##### 2.1.1.6. MATERIALS

##### 2.1.1.7. MATERIALS

##### 2.1.1.8. MATERIALS

##### 2.1.1.9. MATERIALS

##### 2.1.1.10. MATERIALS

##### 2.1.1.11. MATERIALS

##### 2.1.1.12. MATERIALS

##### 2.1.1.13. MATERIALS

##### 2.1.1.14. MATERIALS

##### 2.1.1.15. MATERIALS

##### 2.1.1.16. MATERIALS

##### 2.1.1.17. MATERIALS

##### 2.1.1.18. MATERIALS

##### 2.1.1.19. MATERIALS

##### 2.1.1.20. MATERIALS

##### 2.1.1.21. MATERIALS

##### 2.1.1.22. MATERIALS

##### 2.1.1.23. MATERIALS

##### 2.1.1.24. MATERIALS

##### 2.1.1.25. MATERIALS

##### 2.1.1.26. MATERIALS

##### 2.1.1.27. MATERIALS

##### 2.1.1.28. MATERIALS

##### 2.1.1.29. MATERIALS

##### 2.1.1.30. MATERIALS

##### 2.1.1.31. MATERIALS

##### 2.1.1.32. MATERIALS

##### 2.1.1.33. MATERIALS

##### 2.1.1.34. MATERIALS

##### 2.1.1.35. MATERIALS

## 3. FINISHES

### 3.1. FINISHES

#### 3.1.1. FINISHES

##### 3.1.1.1. FINISHES

##### 3.1.1.2. FINISHES

##### 3.1.1.3. FINISHES

##### 3.1.1.4. FINISHES

##### 3.1.1.5. FINISHES

##### 3.1.1.6. FINISHES

##### 3.1.1.7. FINISHES

##### 3.1.1.8. FINISHES

##### 3.1.1.9. FINISHES

##### 3.1.1.10. FINISHES

##### 3.1.1.11. FINISHES

##### 3.1.1.12. FINISHES

##### 3.1.1.13. FINISHES

##### 3.1.1.14. FINISHES

##### 3.1.1.15. FINISHES

##### 3.1.1.16. FINISHES

##### 3.1.1.17. FINISHES

##### 3.1.1.18. FINISHES

##### 3.1.1.19. FINISHES

##### 3.1.1.20. FINISHES

##### 3.1.1.21. FINISHES

##### 3.1.1.22. FINISHES

##### 3.1.1.23. FINISHES

##### 3.1.1.24. FINISHES

##### 3.1.1.25. FINISHES

##### 3.1.1.26. FINISHES

##### 3.1.1.27. FINISHES

##### 3.1.1.28. FINISHES

##### 3.1.1.29. FINISHES

##### 3.1.1.30. FINISHES

##### 3.1.1.31. FINISHES

##### 3.1.1.32. FINISHES

##### 3.1.1.33. FINISHES

##### 3.1.1.34. FINISHES

##### 3.1.1.35. FINISHES

## 4. SERVICES

### 4.1. SERVICES

#### 4.1.1. SERVICES

##### 4.1.1.1. SERVICES

##### 4.1.1.2. SERVICES

##### 4.1.1.3. SERVICES

##### 4.1.1.4. SERVICES

##### 4.1.1.5. SERVICES

##### 4.1.1.6. SERVICES

##### 4.1.1.7. SERVICES

##### 4.1.1.8. SERVICES

##### 4.1.1.9. SERVICES

##### 4.1.1.10. SERVICES

##### 4.1.1.11. SERVICES

##### 4.1.1.12. SERVICES

##### 4.1.1.13. SERVICES

##### 4.1.1.14. SERVICES

##### 4.1.1.15. SERVICES

##### 4.1.1.16. SERVICES

##### 4.1.1.17. SERVICES

##### 4.1.1.18. SERVICES

##### 4.1.1.19. SERVICES

##### 4.1.1.20. SERVICES

##### 4.1.1.21. SERVICES

##### 4.1.1.22. SERVICES

##### 4.1.1.23. SERVICES

##### 4.1.1.24. SERVICES

##### 4.1.1.25. SERVICES

##### 4.1.1.26. SERVICES

##### 4.1.1.27. SERVICES

##### 4.1.1.28. SERVICES

##### 4.1.1.29. SERVICES

##### 4.1.1.30. SERVICES

##### 4.1.1.31. SERVICES

##### 4.1.1.32. SERVICES

##### 4.1.1.33. SERVICES

##### 4.1.1.34. SERVICES

##### 4.1.1.35. SERVICES

## 5. SCHEDULES

### 5.1. SCHEDULES

#### 5.1.1. SCHEDULES

##### 5.1.1.1. SCHEDULES

##### 5.1.1.2. SCHEDULES

##### 5.1.1.3. SCHEDULES

##### 5.1.1.4. SCHEDULES

##### 5.1.1.5. SCHEDULES

##### 5.1.1.6. SCHEDULES

##### 5.1.1.7. SCHEDULES

##### 5.1.1.8. SCHEDULES

##### 5.1.1.9. SCHEDULES

##### 5.1.1.10. SCHEDULES

##### 5.1.1.11. SCHEDULES

##### 5.1.1.12. SCHEDULES

##### 5.1.1.13. SCHEDULES

##### 5.1.1.14. SCHEDULES

##### 5.1.1.15. SCHEDULES

##### 5.1.1.16. SCHEDULES

##### 5.1.1.17. SCHEDULES

##### 5.1.1.18. SCHEDULES

##### 5.1.1.19. SCHEDULES

##### 5.1.1.20. SCHEDULES

##### 5.1.1.21. SCHEDULES

##### 5.1.1.22. SCHEDULES

##### 5.1.1.23. SCHEDULES

##### 5.1.1.24. SCHEDULES

##### 5.1.1.25. SCHEDULES

##### 5.1.1.26. SCHEDULES

##### 5.1.1.27. SCHEDULES

##### 5.1.1.28. SCHEDULES

##### 5.1.1.29. SCHEDULES

##### 5.1.1.30. SCHEDULES

##### 5.1.1.31. SCHEDULES

##### 5.1.1.32. SCHEDULES

##### 5.1.1.33. SCHEDULES

##### 5.1.1.34. SCHEDULES

##### 5.1.1.35. SCHEDULES

## 6. APPENDICES

### 6.1. APPENDICES

#### 6.1.1. APPENDICES

##### 6.1.1.1. APPENDICES

##### 6.1.1.2. APPENDICES

##### 6.1.1.3. APPENDICES

##### 6.1.1.4. APPENDICES

##### 6.1.1.5. APPENDICES

##### 6.1.1.6. APPENDICES

##### 6.1.1.7. APPENDICES

##### 6.1.1.8. APPENDICES

##### 6.1.1.9. APPENDICES

##### 6.1.1.10. APPENDICES

##### 6.1.1.11. APPENDICES

##### 6.1.1.12. APPENDICES

##### 6.1.1.13. APPENDICES

##### 6.1.1.14. APPENDICES

##### 6.1.1.15. APPENDICES

##### 6.1.1.16. APPENDICES

##### 6.1.1.17. APPENDICES

##### 6.1.1.18. APPENDICES

##### 6.1.1.19. APPENDICES

##### 6.1.1.20. APPENDICES

##### 6.1.1.21. APPENDICES

##### 6.1.1.22. APPENDICES

##### 6.1.1.23. APPENDICES

##### 6.1.1.24. APPENDICES

##### 6.1.1.25. APPENDICES

##### 6.1.1.26. APPENDICES

##### 6.1.1.27. APPENDICES

##### 6.1.1.28. APPENDICES

##### 6.1.1.29. APPENDICES

##### 6.1.1.30. APPENDICES

##### 6.1.1.31. APPENDICES

##### 6.1.1.32. APPENDICES


##### 6.1.1.33. APPENDICES

##### 6.1.1.34. APPENDICES

##### 6.1.1.35. APPENDICES



Plot 9 Coed Parc Rise, Off Walters Road, Bridgend, Bridgend County. CF31 4HE

Energy Efficiency Rating		
	Current	Potential
Very energy efficient - lower running costs		
(92+)	A	
(81-91)	B	
(69-80)	C	
(55-68)	D	
(39-54)	E	
(21-38)	F	
(1-20)	G	
Not energy efficient - higher running costs		
England, Scotland & Wales	EU Directive 2002/91/EC	

The energy efficiency rating is a measure of the overall efficiency of a home. The higher the rating the more energy efficient the home is and the lower the fuel bills will be.



All measurements are approximate. The deeds have not been inspected. Please note that we have not tested the services of any of the equipment or appliances in the property. Price threshold LTT rate: The portion up to and including £180,000 0%. The portion over £180,000 up to and including £250,000 3.5%. The portion over £250,000 up to and including £400,000 5%. The portion over £400,000 up to and including £750,000 7.5%. The portion over £750,000 up to and including £1,500,000 10%. The portion over £1,500,000 12%. Proceeds of Crime Act 2002: We are obliged to report any knowledge or suspicion of money laundering to NCIS( National crime Intelligence Service) and should a report prove necessary we are precluded from conducting any further professional work without consent from NCIS. These Particulars are issued in good faith by us from information supplied by the vendor, but the accuracy is not guaranteed, nor will we accept responsibility for any error therein, nor shall the particulars from part of any contract. These particulars are also issued on the understanding that any negotiations in respect of the purchase of this property shall be carried out through us. Your home is at risk if you do not keep up repayments on a mortgage or any other loan secured on it. An insurance contract may be required. Written quotation available upon request. Mortgages secured on property.

Neath Hub	Neath Financial Services	Bridgend Sales Hub	Talbot Green Hub	Carmarthen Hub	Cardiff Hub
npt@petermorgan.net lettings@petermorgan.net  33-35 Windor Road, West Glamorgan SA11 1NB	team@pmfinancial.net  The Mortgage House, 5 The Ropewalk, Neath SA11 1EW	bcb@petermorgan.net  16 Dunraven Place, Mid Glamorgan CF31 1JD	talbotgreen@petermorgan.net lettingstg@petermorgan.net  Ty Gwyn, 38 Talbot Road Talbot Green, Pontyclun CF72 8AF	carmarthen@petermorgan.net lettingscm@petermorgan.net  21 Bridge Street, Carmarthen SA31 3JS	cardiff@petermorgan.net lettingscd@petermorgan.net  144 Crwys Road, Cathays Cardiff CF24 4NP

# PETER MORGAN



PROPERTY. PROPERLY

SALES - LETTINGS - AUCTION - FINANCIAL - EXCLUSIVE

ESTAS  
★★★★★

BEST IN POSTCODE  
WINNER 2025

#customerserviceawards

Offering services in Sales, Lettings, Auctions and Online Estate Agency with an in house Mortgage Advisor offering free advice to all clients.

## Bridgend County Branch

16 Dunraven Place, Bridgend. CF31 1JD

bcb@petermorgan.net

VAT No : **821850148**

**www.petermorgan.net**  
**03300 563 555**



Head Office: 33-35 Windsor Road, Neath SA11 1NB - info@petermorgan.net - VAT No: 821 8501 48 - Copyright © Peter Morgan 2023- Powered by AgentPro

