



| Park Road | Bowdon

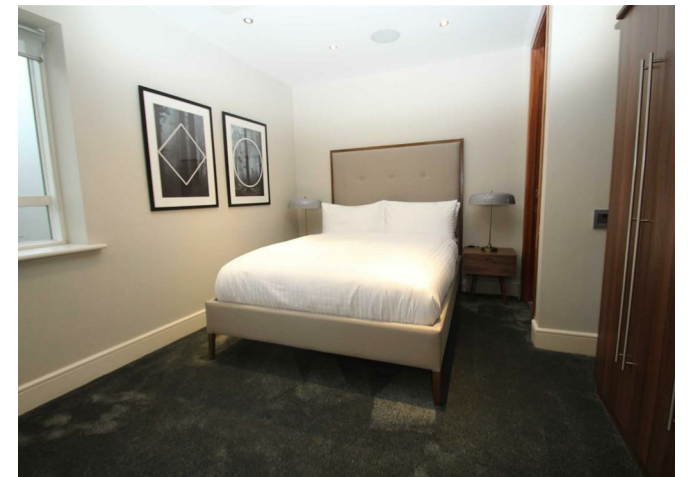




£4,250 PCM



*** AVAILABLE JUNE *** Park Road, BOWDON - Luxury 2nd floor 3 bedroom apartment within a stunning block in a prime location. The interior and furnishings are of the highest quality and the apartment is ready to move into immediately! Fabulous open plan lounge kitchen and dining with balcony to the front aspect. The kitchen is fully fitted with state of the art appliances including wine fridge and coffee machine. The apartment has been fitted with an intelligent media system controlling both media and heating. Three large double bedrooms all with en suites and the master bedroom includes a walk in wardrobe. Lift access, under ground parking and security gates. Fully furnished £4,750pcm. Please contact the Hale office to arrange viewings 0161 929 9797.



- 3 Double Bedroom Suites
- State of the art Appliances

- Security Gates
- EPC Rating - B

- Underground Parking
- Council Tax Band H

www.jfexclusive.co.uk

hale@jordanfishwick.co.uk



JORDAN FISHWICK
EXCLUSIVE

0161 929 9797



While every attempt has been made to ensure the accuracy of the floor plan, customer team measurements of rooms, windows, doors and any other items are approximate and no responsibility is taken by any individual or measurement. The user is for information purposes only and should be used as a guide to any prospective purchase. The services, fixtures and appliances shown have not been tested and no guarantee as to their operability or efficiency can be given.
Made with RoomSketcher

Jordan Fishwick
172 Ashley Road
Altrincham
Cheshire
WA15 9SF

hale@jordanfishwick.co.uk

IMPORTANT: we would like to inform prospective purchasers that these sales particulars have been prepared as a general guide only. A detailed survey has not been carried out, nor the services, appliances and fittings tested. Room sizes should not be relied upon for furnishing purposes and are approximate. If floor plans are included, they are for guidance only and illustration purposes only and may not be to scale. If there are any important matters likely to affect your decision to buy, please contact us before viewing the property.