



jordan fishwick

ALTRINCHAM
Stanhope Road



**Stanhope Road,
Altrincham, WA14 3JL**

Offers Over £600,000



The Property

Located on the first floor of this prestigious development, Jordan Fishwick are proud to present for sale this stunning three bedroom apartment on one of Bowdon's most sought after roads. Dunham Court is ideally positioned for easy access to various transport links including the motorway network and Manchester International Airport. The popular amenities of both Hale village and Altrincham town centre are just a few minutes drive away, as is the National Trusts' Dunham Massey and Dunham Golf Course.

In brief the apartment offers a large entrance hallway/ dining hall, a large lounge, kitchen breakfast, utility/ storage room, two double bedrooms with main bedroom ensuite, a single third bedroom with Juliette balcony and a four piece family bathroom.

The development comes with lift access and a stunning an immaculate communal entrance. The apartment benefits from underground allocated parking and there is also visitor parking available.

Viewings are strongly advised to appreciate this fantastic sized modern apartment.

Directions

WA14 3JL



- 999 Year Lease from 2000
- Luxury First Floor Three Bedroom Apartment
- Underground Allocated Parking And Visitor Parking
- Juliette Balcony
- Lift Access
- 1,700 sqft approx
- EPC Rating C
- Main Bedroom Ensuite and Four Piece Family Bathroom
- Kitchen Breakfast and Separate Lounge
- £4,743.24 Service Charge Per Annum - Paid Quarterly

Postcode - WA14 3JL

EPC Rating - C

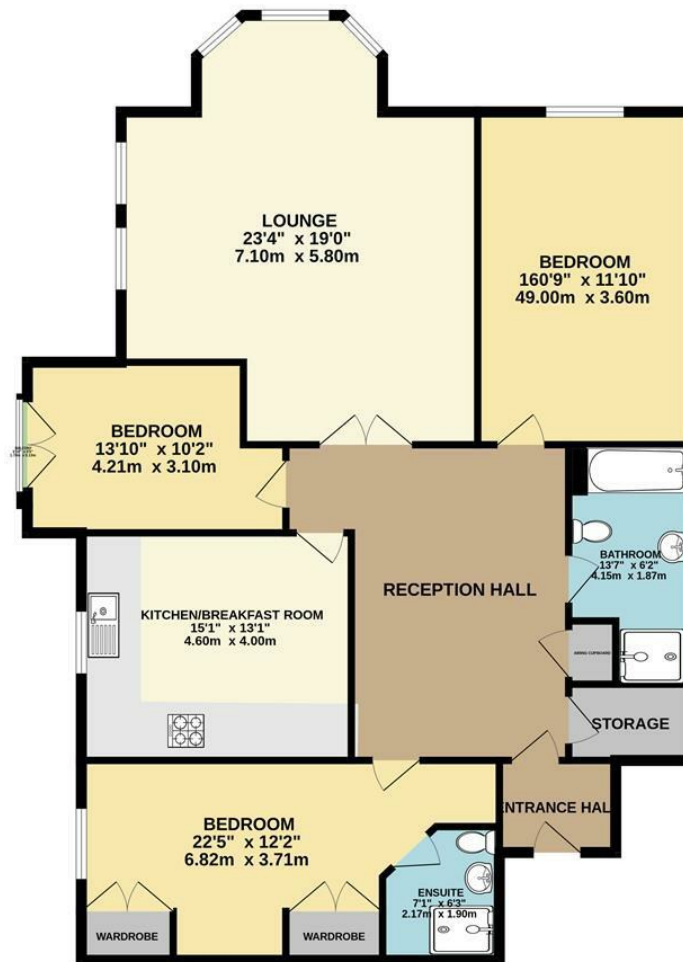
Floor Area - 1744.00 sq ft

Local Authority - Trafford Council

Council Tax - F



FIRST FLOOR
1744 sq.ft. (162.0 sq.m.) approx.



TOTAL FLOOR AREA: 1744 sq.ft. (162.0 sq.m.) approx.

Whilst every attempt has been made to ensure the accuracy of the floorplan contained here, measurements of doors, windows, rooms and any other items are approximate and no responsibility is taken for any error, omission or mis-statement. This plan is for illustrative purposes only and should be used as such by any prospective purchaser. The services, systems and appliances shown have not been tested and no guarantee as to their operability or efficiency can be given.
Made with Metropix ©2025



These particulars are believed to be accurate but they are not guaranteed and do not form a contract. Neither Jordan Fishwick nor the vendor or lessor accept any responsibility in respect of these particulars, which are not intended to be statements or representations of fact and any intending purchaser or lessee must satisfy himself by inspection or otherwise as to the correctness of each of the statements contained in these particulars. Any floorplans on this brochure are for illustrative purposes only and are not necessarily to scale.

Offices at: Chorlton, Didsbury, Disley, Hale, Glossop, Macclesfield, Manchester Deansgate, Manchester Whitworth Street, New Mills, Sale, Wilmslow and Withington

0161 929 9797

hale@jordanfishwick.co.uk
www.jordanfishwick.co.uk