

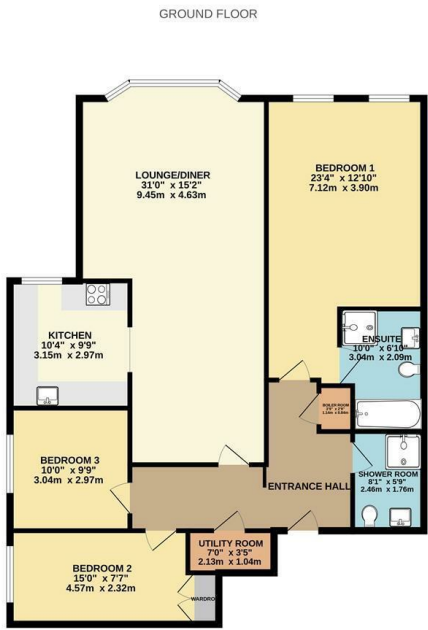


jordanfishwick

CHESHAM HOUSE 2 CHESHAM PLACE BOWDON WA14 2JL
PCM £3,000 PCM

CHESHAM HOUSE 2 CHESHAM PLACE BOWDON WA14 2JL

*** AVAILABLE NOW *** A MAGNIFICENT APARTMENT IN A PRESTIGIOUS DEVELOPMENT CLOSE TO HALE VILLAGE. The original mansion house was converted into 9 apartments by renowned Developer Belmont Homes in 2005, and this second floor apartment retains the large rooms, 10ft ceiling heights and features one would expect from a building of this age, which are complimented by a very high quality, contemporary finish. Large living/dining room with wooden flooring, stylish fitted kitchen, extensive master bedroom with en-suite, two further bedrooms, family bathroom with separate shower/bath and separate utility room. The apartment sits behind secure electric gates and is surrounded by immaculate communal gardens with on-site underground parking. Available now. Unfurnished. Call our Hale office today on 0161 929 9797.



3 BEDROOM 2 BATHROOMS

While every attempt has been made to ensure the accuracy of the figures contained here, measurements of plots, distances, areas and any other facts are approximate and no responsibility is taken for any errors or omissions in this document. This plan is for guidance purposes only and should not be used as a basis for any purchase or lease. The plan is not a contract and no guarantee is given for its accuracy. Please refer to the actual property for details and for any other information.



- THREE BEDROOMS
- APARTMENT
- TWO BATHROOMS
- GATED PARKING FOR 2 CARS
- UNFURNISHED
- COUNCIL TAX BAND G
- EPC RATING C

