



jordan fishwick

ALTRINCHAM
Welman Way



**Welman Way,
Altrincham, WA15 8WD**

£450,000



The Property

A superbly updated and presented three bedroom mid terrace

Benefitting from its excellent position at the foot of a cul-de-sac on this hugely popular development. Ideally located just a stones throw from Stamford Park, a short walk from the market town of Altrincham and exclusive village of Hale. The accommodation comprises entrance hallway with downstairs WC, excellent size lounge with feature fireplace, stunning dining kitchen with integrated appliances, tiled flooring and French doors leading to a private astro turfed rear garden. To the first floor is a magnificent master bedroom with fitted wardrobes, a further double bedroom, a single and family bathroom. The property has off road parking for two and a garage.

Directions

WA15 8WD



- Selling with a Tenant in Situ
- Off Road Parking for Two with Garage
- Ideal Altrincham Location
- Walking Distance to Altrincham
- Modern Kitchen and Bathroom

Postcode - WA15 8WD

EPC Rating - D

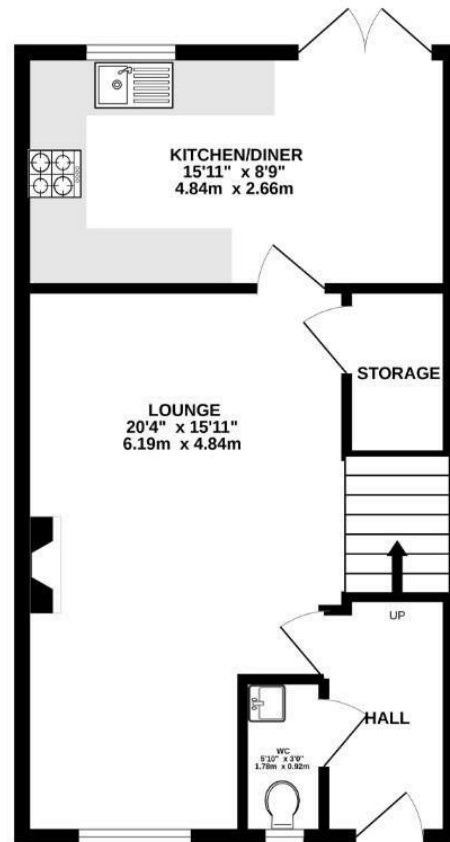
Floor Area - 918.00 sq ft

Local Authority - Trafford Council

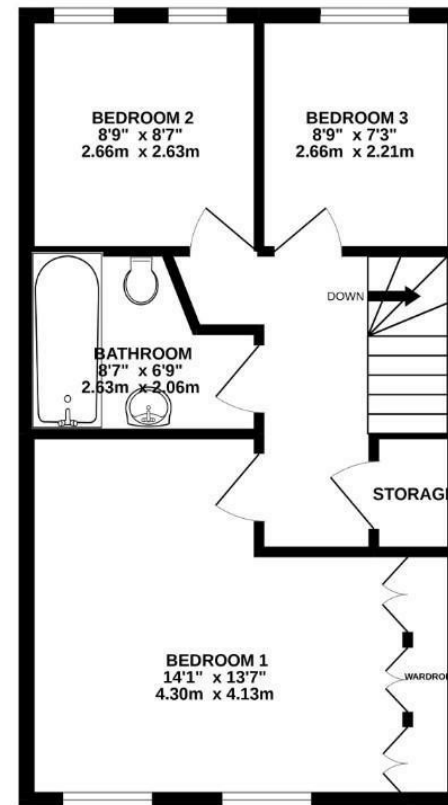
Council Tax - D



GROUND FLOOR
457 sq.ft. (42.4 sq.m.) approx.



1ST FLOOR
461 sq.ft. (42.8 sq.m.) approx.



TOTAL FLOOR AREA: 918 sq.ft. (85.3 sq.m.) approx.

Whilst every attempt has been made to ensure the accuracy of the floorplan contained here, measurements of doors, windows, rooms and any other items are approximate and no responsibility is taken for any error, omission or mis-statement. This plan is for illustrative purposes only and should be used as such by any prospective purchaser. The services, systems and appliances shown have not been tested and no guarantee as to their operability or efficiency can be given.
Made with Metropix ©2022



These particulars are believed to be accurate but they are not guaranteed and do not form a contract. Neither Jordan Fishwick nor the vendor or lessor accept any responsibility in respect of these particulars, which are not intended to be statements or representations of fact and any intending purchaser or lessee must satisfy himself by inspection or otherwise as to the correctness of each of the statements contained in these particulars. Any floorplans on this brochure are for illustrative purposes only and are not necessarily to scale.

Offices at: Chorlton, Didsbury, Disley, Hale, Glossop, Macclesfield, Manchester Deansgate, Manchester Whitworth Street, New Mills, Sale, Wilmslow and Withington

0161 929 9797

hale@jordanfishwick.co.uk
www.jordanfishwick.co.uk