





£4,000 PCM

Features

- THREE BEDROOMS • OPEN PLAN LIVING
- BALCONY • FURNISHED
- OFF ROAD PARKING • GATED DEVELOPMENT
- COUNCIL TAX BAND H



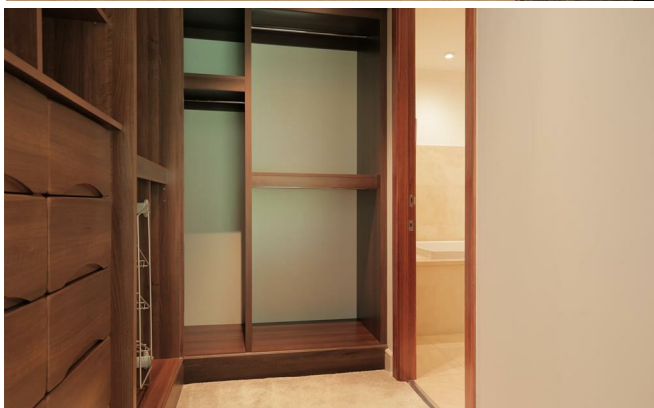
*** AVAILABLE NOW *** Executive first floor apartment within a striking and exclusive development. Three bedrooms, three bathrooms, large open plan lounge, dining room and fully fitted kitchens. Access the the attractive communal gardens from the master bedroom. No expense has been spared in fitting the very latest in user friendly technology featuring intelligent lighting, fitted plasma screens and integrated sound system, all complemented by the very finest furnishings. The apartment comes with secure under croft parking and storage cupboards accessible via the lift. Contact us now to view - 0161 929 9797



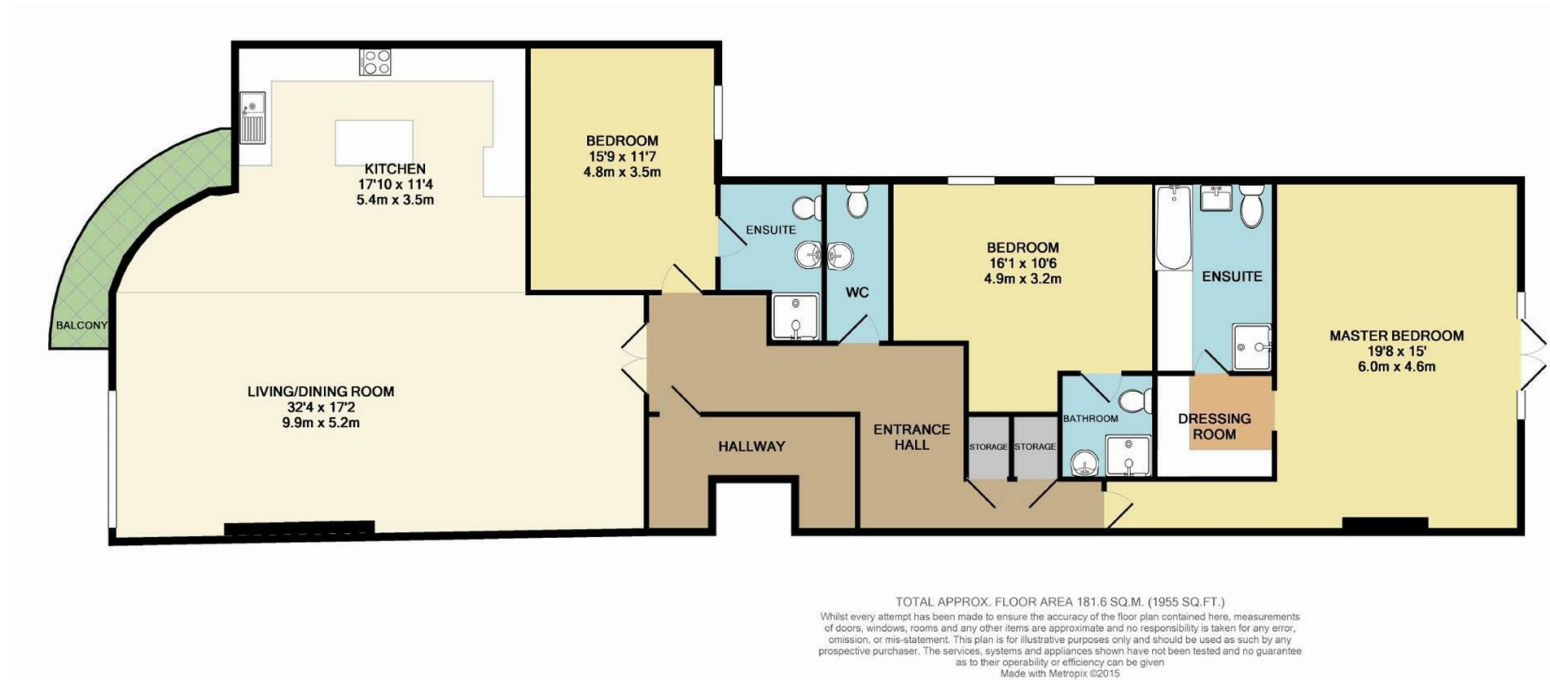
General information

- **Tax Band:** H
- **Sqft:** 1955.00 sq ft
- **Plot:** acre(s)
- **Bedrooms:** 3
- **Bathrooms:** 3
- **Postcode:** WA14 3JF









IMPORTANT: we would like to inform prospective purchasers that these sales particulars have been prepared as a general guide only. A detailed survey has not been carried out, nor the services, appliances and fittings tested. Room sizes should not be relied upon for furnishing purposes and are approximate. If floor plans are included, they are for guidance only and illustration purposes only and may not be to scale. If there are any important matters likely to affect your decision to buy, please contact us before viewing the property.

