



jordan fishwick

ALTRINCHAM
Woodfield Road



Woodfield Road, Altrincham, WA14 4YQ

£235,000



The Property

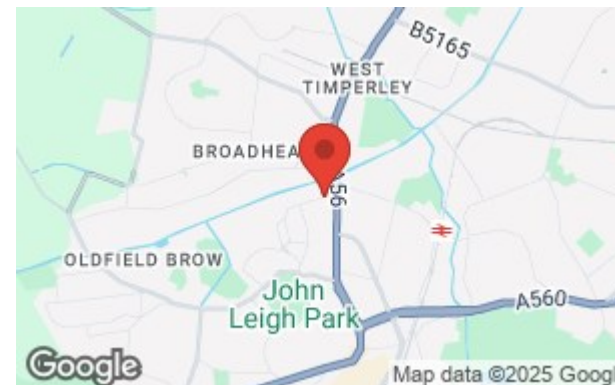
Beautifully presented two bedroom, two bathroom ground floor apartment located within walking distance of Altrincham Town Centre and local transport links.

Built in 2017 by Laurus Homes the property in brief comprises: Entrance hallway with telephone intercom system and storage cupboard, a stunning open plan lounge/diner with feature Juliette balcony. Fully fitted kitchen with modern appliances and breakfast bar. Two double bedrooms - main bedroom with an en-suite shower room and finally you have the main bathroom.

Externally you have allocated parking for one and visitors parking.

Directions

WA14 4YQ



- Two Bedrooms
- Two Bathrooms
- Ground Floor Apartment
- Off Road Car Parking
- Immaculate Condition
- Open Plan Kitchen Living Area
- Local Amenities In Walking Distance
- Gas Central Heating

Postcode - WA14 4YQ

EPC Rating - B

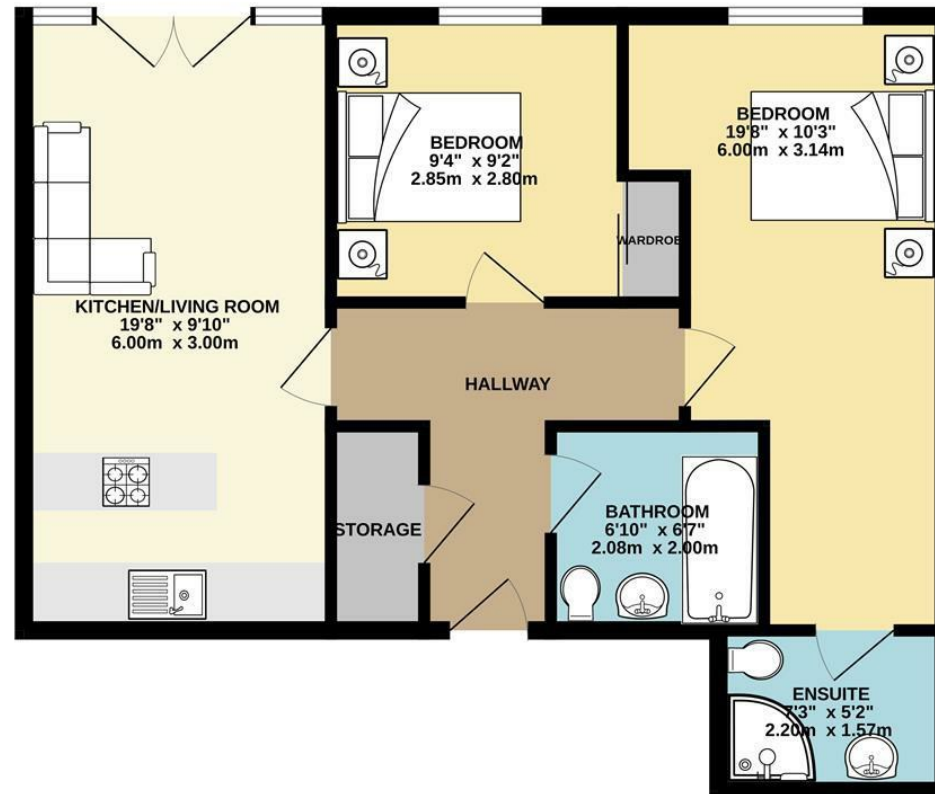
Floor Area - 618.00 sq ft

Local Authority - Trafford

Council Tax - D



GROUND FLOOR
618 sq.ft. (57.4 sq.m.) approx.



TOTAL FLOOR AREA : 618 sq.ft. (57.4 sq.m.) approx.

Whilst every attempt has been made to ensure the accuracy of the floorplan contained here, measurements of doors, windows, rooms and any other items are approximate and no responsibility is taken for any error, omission or mis-statement. This plan is for illustrative purposes only and should be used as such by any prospective purchaser. The services, systems and appliances shown have not been tested and no guarantee as to their operability or efficiency can be given.
Made with Metropix ©2024



These particulars are believed to be accurate but they are not guaranteed and do not form a contract. Neither Jordan Fishwick nor the vendor or lessor accept any responsibility in respect of these particulars, which are not intended to be statements or representations of fact and any intending purchaser or lessee must satisfy himself by inspection or otherwise as to the correctness of each of the statements contained in these particulars. Any floorplans on this brochure are for illustrative purposes only and are not necessarily to scale.

Offices at: Chorlton, Didsbury, Disley, Hale, Glossop, Macclesfield, Manchester Deansgate, Manchester Whitworth Street, New Mills, Sale, Wilmslow and Withington

0161 929 9797

hale@jordanfishwick.co.uk
www.jordanfishwick.co.uk