



jordan fishwick

ALTRINCHAM
Briarfield Road



Briarfield Road, Altrincham, WA15 7DG

Offers In Excess Of £350,000



The Property

Offering no onward chain! An exceptional and recently renovated 3 bedroom terraced property with generous garden and driveway.

Ideal for first time buyers and buy to let investors this superb property benefits from a recently Fitted dining kitchen, shower room with rain water shower, new flooring, contemporary style oak internal doors, re-decoration throughout and a new composite front door.

Accommodation briefly comprises: Welcoming entrance hallway, bright and spacious living room, a superb fitted dining kitchen with gas hob and space for an American style fridge freezer, integrated microwave, oven and sink with pull out flexy tap. A further storage/utility room with downstairs W.C and sliding patio doors providing access to the rear garden completes the ground floor. On the 1st floor there is an excellent sized landing with storage and loft access which is fully boarded, 3 well proportioned bedrooms, and the luxuriously appointed shower room with rain-shower feature completes the accommodation. The property is warmed by a GCH system and UPVC double glazed.

Externally a driveway provides ample parking and the excellent sized rear garden with patio and lawn provides a pleasant backdrop to this spacious terraced home.

Directions

WA15 7DG



- Three bedroom mid terrace
- Open plan living
- Downstairs WC
- Modern newly fitted kitchen
- Utility room
- 1,002sqft
- Gated off road parking
- Offering no onward chain

Postcode - WA15 7DG

EPC Rating - C

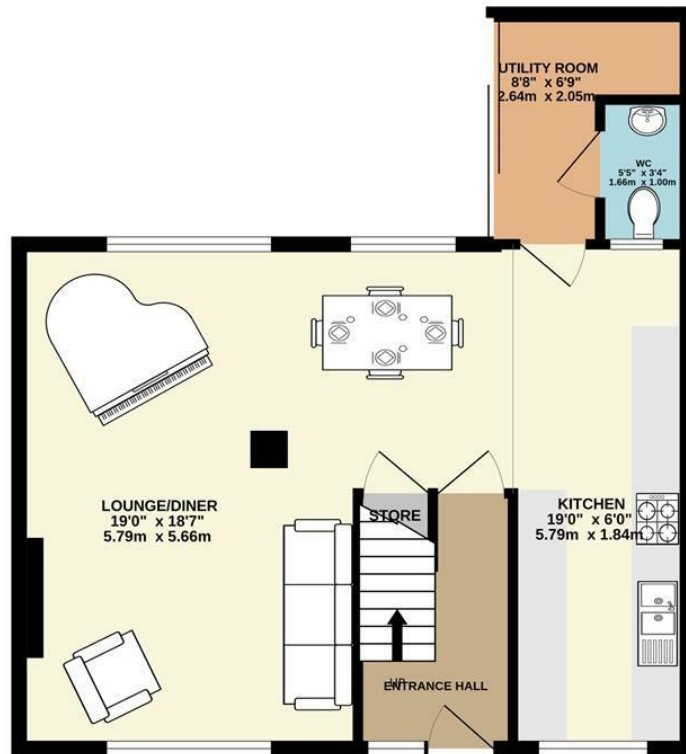
Floor Area - 1002.00 sq ft

Local Authority - Trafford

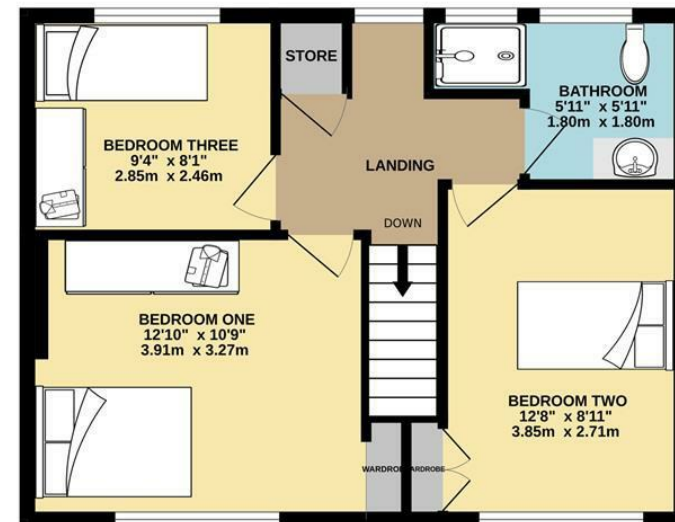
Council Tax - B



GROUND FLOOR
537 sq.ft. (49.9 sq.m.) approx.



1ST FLOOR
466 sq.ft. (43.3 sq.m.) approx.



TOTAL FLOOR AREA : 1002 sq.ft. (93.1 sq.m.) approx.

Whilst every attempt has been made to ensure the accuracy of the floorplan contained here, measurements of doors, windows, rooms and any other items are approximate and no responsibility is taken for any error, omission or mis-statement. This plan is for illustrative purposes only and should be used as such by any prospective purchaser. The services, systems and appliances shown have not been tested and no guarantee as to their operability or efficiency can be given.
Made with Metropix ©2025



These particulars are believed to be accurate but they are not guaranteed and do not form a contract. Neither Jordan Fishwick nor the vendor or lessor accept any responsibility in respect of these particulars, which are not intended to be statements or representations of fact and any intending purchaser or lessee must satisfy himself by inspection or otherwise as to the correctness of each of the statements contained in these particulars. Any floorplans on this brochure are for illustrative purposes only and are not necessarily to scale.

Offices at: Chorlton, Didsbury, Disley, Hale, Glossop, Macclesfield, Manchester Deansgate, Manchester Whitworth Street, New Mills, Sale, Wilmslow and Withington

0161 929 9797

hale@jordanfishwick.co.uk
www.jordanfishwick.co.uk