



jordan fishwick

BOWDON
Park Road



Park Road, Bowdon, WA14 3JF

Offers Over £1,000,000



The Property

NO ONWARD CHAIN. Executive first floor luxury apartment located within the modern and exclusive development of Cornhill. The apartment is within walking distance of Altrincham town centre and Hale village. As well as easy access to motorway links.

The property has been elegantly refurbished throughout, with state of the art lighting, sound systems and secured entry system. In brief the property offers generous open plan living with a fully integrated kitchen and breakfast island, and access to a south facing balcony. The three double bedrooms are complemented by modern ensembles, with the principle bedroom further benefitting from a walk in wardrobe.

There is underfloor heating throughout the apartment and a separate WC located within main hallway.

Externally the development is gated and there is access to secure underground parking. The apartment also has access to a private rear garden accessed by the two apartments on the first floor.

Directions

WA14 3JF



- Three bedroom luxury apartment
- Immaculate throughout
- Three ensembles
- Open plan living area
- Access to garden area
- Undercroft car parking
- Gated and secure entrance
- Premium development
- No onward chain

Postcode - WA14 3JF

EPC Rating - B

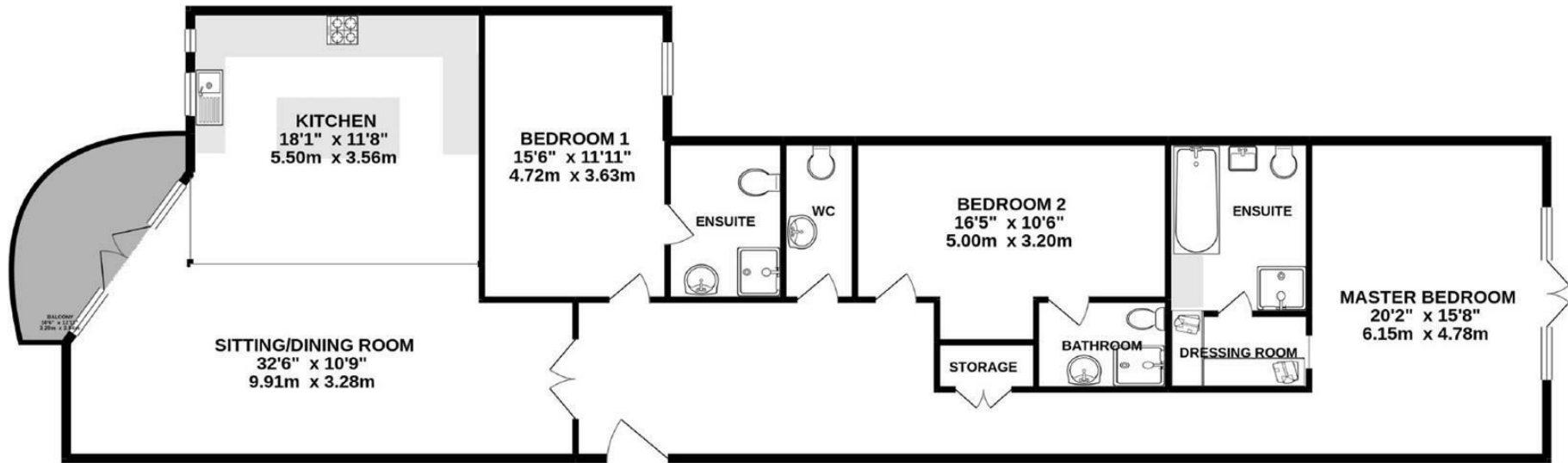
Floor Area - 1955.00 sq ft

Local Authority - Trafford Council

Council Tax - H



FIRST FLOOR



TOTAL FLOOR AREA : 1955 sq.ft. (181.6 sq.m.) approx.

Whilst every attempt has been made to ensure the accuracy of the floorplan contained here, measurements of doors, windows, rooms and any other items are approximate and no responsibility is taken for any error, omission or mis-statement. This plan is for illustrative purposes only and should be used as such by any prospective purchaser. The services, systems and appliances shown have not been tested and no guarantee as to their operability or efficiency can be given.
Made with Metropix ©2021



These particulars are believed to be accurate but they are not guaranteed and do not form a contract. Neither Jordan Fishwick nor the vendor or lessor accept any responsibility in respect of these particulars, which are not intended to be statements or representations of fact and any intending purchaser or lessee must satisfy himself by inspection or otherwise as to the correctness of each of the statements contained in these particulars. Any floorplans on this brochure are for illustrative purposes only and are not necessarily to scale.

Offices at: Chorlton, Didsbury, Disley, Hale, Glossop, Macclesfield, Manchester Deansgate, Manchester Whitworth Street, New Mills, Sale, Wilmslow and Withington

0161 929 9797

hale@jordanfishwick.co.uk
www.jordanfishwick.co.uk