



JORDAN FISHWICK
EXCLUSIVE

| 231 Ashley Road | Hale





£6,950 Per Month

Features

- Large lounge/dining rooms
- Modern fitted breakfast kitchens and stylish bathrooms.
- Gated parking and lifts to all floors.
- Available Part or Fully Furnished
- Recently renovated
- Duplex
- Council Tax Band F



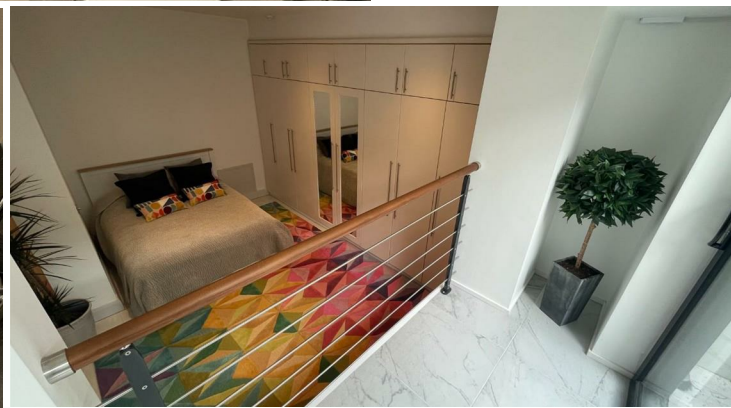
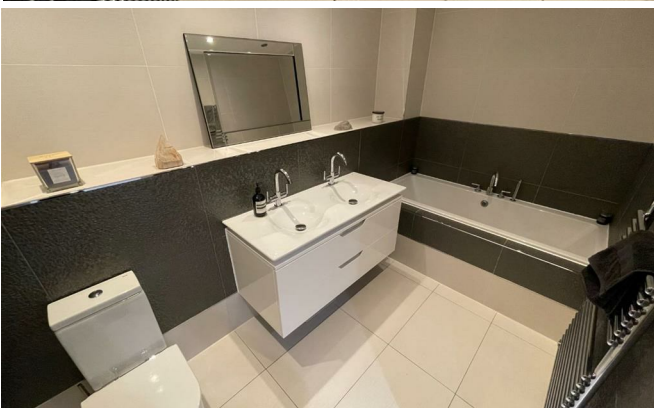
Duplex Luxury Apartment, set literally within a few yards flat walking distance of Hale village, this bespoke development of just seven apartments offers well planned accommodation. The apartment comprises; entrance hallway. Spacious, bright living room with picture windows leading into a modern fully fitted kitchen, spiral staircase to lower ground floor and access from kitchen to outside terrace with cinema/exercise room. Three double bedroom areas, two with en-suite facilities, a separate modern main bathroom. The accommodation is split over two levels with a spiral staircase linking both floors. The property benefits from multiple private outside spaces including lawn and terrace as well as a private outdoor terrace to the lower ground floor. There is an electronically gated entrance with residents car parking and garage. Furnishings are flexible. Available with notice - call now to view - 0161 929 9797



General information

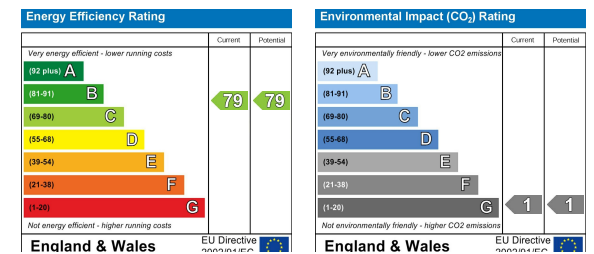
- Tax Band: F
- Sqft: sq ft
- Plot: acre(s)
- Bedrooms: 3
- Bathrooms: 3
- Postcode: WA15 9SX







IMPORTANT: we would like to inform prospective purchasers that these sales particulars have been prepared as a general guide only. A detailed survey has not been carried out, nor the services, appliances and fittings tested. Room sizes should not be relied upon for furnishing purposes and are approximate. If floor plans are included, they are for guidance only and illustration purposes only and may not be to scale. If there are any important matters likely to affect your decision to buy, please contact us before viewing the property.



JORDAN FISHWICK
EXCLUSIVE

Jordan Fishwick
172 Ashley Road, Altrincham, Cheshire, WA15 9SF
0161 929 9797
hale@jordanfishwick.co.uk
www.jfexclusive.co.uk