



Jordan fishwick

ALTRINCHAM
Hermitage Road



Hermitage Road, Altrincham, WA15 8BW

£580,000



The Property

Jordan Fishwick are proud to showcase for sale, this beautifully presented three bedroom semi-detached, extended family home. This property on Hermitage road offers great living space and located within a mile of Hale village centre, with some private outdoor space and off road parking.

In brief the property comprises of an entrance hall, bay fronted lounge with shutters, an extended open plan living space to the rear with bi-folds and Velux windows, offering an abundance of natural light. to the first floor there are two double bedrooms and a single bedroom. There is also a modern four-piece family bathroom.

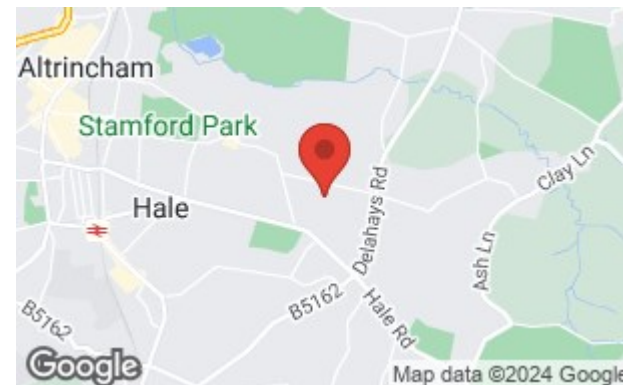
Externally there is a private and enclosed rear garden with a raised terrace area which extends from the kitchen living space of the home. There are steps downs into the lawned garden with a separate patio area which is a "sun trap".

To the front of the property there is side access and off road parking available.

Viewings are strongly advised to truly appreciate this idyllic home.

Directions

WA15 8BW



Map data ©2024 Google

- Extended three bedroom semi-detached home
- Open plan living area
- Council Tax Band D
- EPC D
- Immaculately presented throughout
- Bi-fold doors to garden
- Off-road parking
- Private and enclosed rear garden
- Freehold
- Bay fronted lounge

Postcode - WA15 8BW

EPC Rating - D

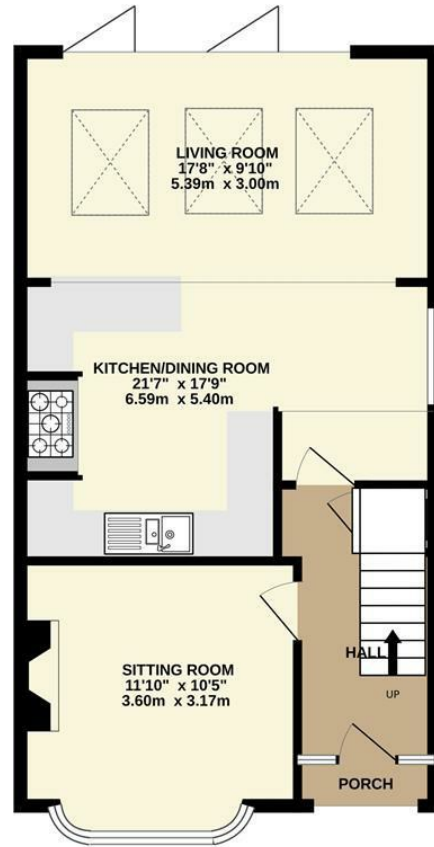
Floor Area - 983.00 sq ft

Local Authority - Trafford

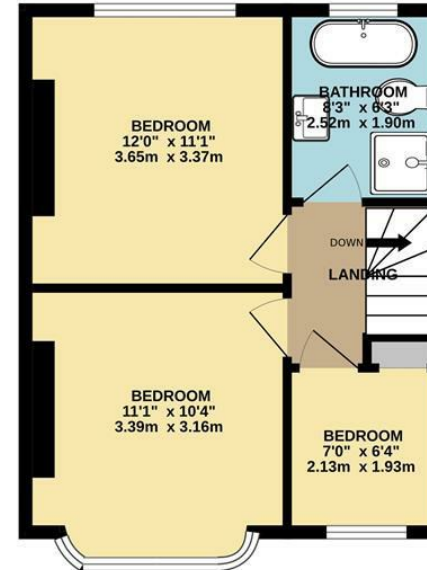
Council Tax - D



GROUND FLOOR



1ST FLOOR



TOTAL FLOOR AREA : 983sq.ft. (91.3 sq.m.) approx.

Whilst every attempt has been made to ensure the accuracy of the floorplan contained here, measurements of doors, windows, rooms and any other items are approximate and no responsibility is taken for any error, omission or mis-statement. This plan is for illustrative purposes only and should be used as such by any prospective purchaser. The services, systems and appliances shown have not been tested and no guarantee as to their operability or efficiency can be given.
Made with Metrapix ©2024



These particulars are believed to be accurate but they are not guaranteed and do not form a contract. Neither Jordan Fishwick nor the vendor or lessor accept any responsibility in respect of these particulars, which are not intended to be statements or representations of fact and any intending purchaser or lessee must satisfy himself by inspection or otherwise as to the correctness of each of the statements contained in these particulars. Any floorplans on this brochure are for illustrative purposes only and are not necessarily to scale.

Offices at: Chorlton, Didsbury, Disley, Hale, Glossop, Macclesfield, Manchester Deansgate, Manchester Whitworth Street, New Mills, Sale, Wilmslow and Withington

0161 929 9797

hale@jordanfishwick.co.uk
www.jordanfishwick.co.uk