



Jordan fishwick

KNUTSFORD
Low Drive



**Low Drive,
Knutsford, WA16 8DN**

£299,995

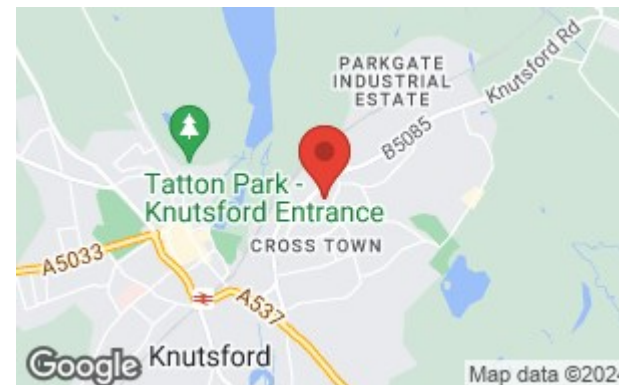


The Property

A well appointed three bedroomed terrace property situated on the outskirts of the ever popular Knutsford Town Centre. Within walking distance to the many local amenities on offer and local schools. In brief the property comprises of: Entrance hallway, a generously sized living area with feature fireplace with double doors leading through to the large open plan kitchen/dining area, with 'French' doors leading to the rear garden. Off the kitchen there is access to a utility area and downstairs W.C with space for a small study. To the first floor there are three good sized bedrooms, the master with built in wardrobes and a family bathroom. Externally to the front of the property is a driveway for off-road parking. Viewings of this property are highly recommended.

Directions

WA16 8DN



- Three Bedroom Terraced Property
- Large Open Plan Kitchen/Dining
- Off Road Parking
- Three Double Bedrooms
- Downstairs W.C
- Study
- Within Walking Distance to Knutsford Town Centre

Postcode - WA16 8DN

EPC Rating -

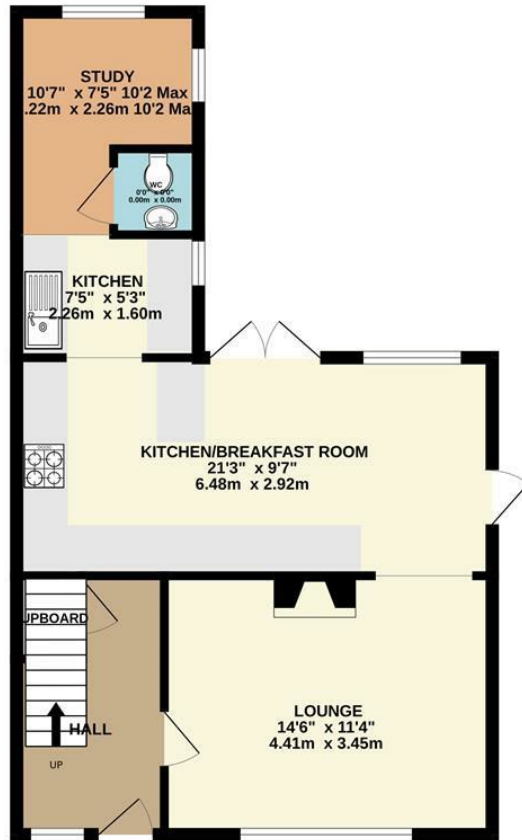
Floor Area - sq ft

Local Authority -

Council Tax -



GROUND FLOOR
561 sq.ft. (52.1 sq.m.) approx.



1ST FLOOR
478 sq.ft. (44.4 sq.m.) approx.



TOTAL FLOOR AREA: 1039 sq.ft. (96.5 sq.m.) approx.

Whilst every attempt has been made to ensure the accuracy of the floorplan contained here, measurements of doors, windows, rooms and any other items are approximate and no responsibility is taken for any error, omission or mis-statement. This plan is for illustrative purposes only and should be used as such by any prospective purchaser. The services, systems and appliances shown have not been tested and no guarantee as to their operability or efficiency can be given.
Made with Metropix ©2024



These particulars are believed to be accurate but they are not guaranteed and do not form a contract. Neither Jordan Fishwick nor the vendor or lessor accept any responsibility in respect of these particulars, which are not intended to be statements or representations of fact and any intending purchaser or lessee must satisfy himself by inspection or otherwise as to the correctness of each of the statements contained in these particulars. Any floorplans on this brochure are for illustrative purposes only and are not necessarily to scale.

Offices at: Chorlton, Didsbury, Disley, Hale, Glossop, Macclesfield, Manchester Deansgate, Manchester Whitworth Street, New Mills, Sale, Wilmslow and Withington

0161 929 9797

hale@jordanfishwick.co.uk
www.jordanfishwick.co.uk