



jordan fishwick

ALTRINCHAM
Burnside



Burnside, Altrincham, WA15 0SG

£3,000 PCM



The Property

***** AVAILABLE NOW ***** Burnside HALE BARNES - Modern and contemporary detached 5 bedroom house located in a popular residential area close to Hale Barns village. Excellent access routes to Manchester and the motorway network. Offering over 2200Sqft of livable space.

The interior has been tastefully designed with modern fixtures and fittings. The house welcomes you with a spacious entrance hallway, formal lounge with contemporary feature fire, live in kitchen with island, sitting area access to the formal dining room. The kitchen is fitted with high end appliances and has pleasant views of the garden. Utility room, down stairs W/C and integral double garage.

The first floor boasts 5 bedrooms with the master including a stunning en suite and fitted wardrobes. Bedroom 2 also includes an en suite and there is a family bathroom to service the other bedrooms which are all nicely proportioned.

Externally you have a nice mature garden and driveway providing off road parking. Available with start of June. Part furnished. Please contact the hale on 0161 929 9797 office to arrange a viewing.

Directions

WA15 0SG



- Great access to Manchester and the airport.
- Five Bedrooms
- Modern and contemporary design throughout.
- Integral garage.
- EPC RATING - C
- Council Tax G

Postcode - WA15 0SG

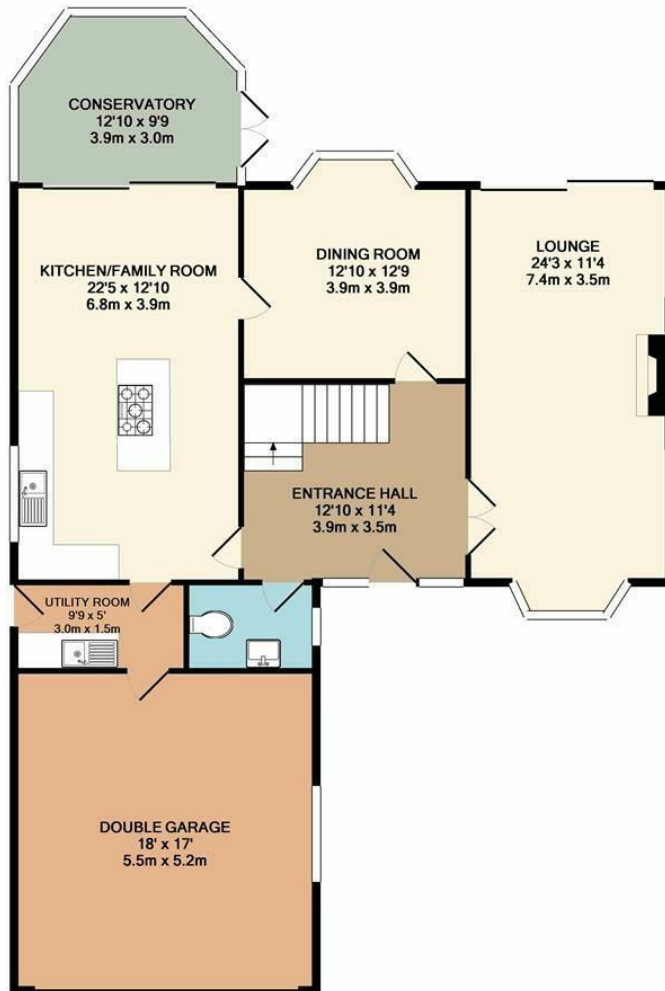
EPC Rating - D

Floor Area - 2217.00 sq ft

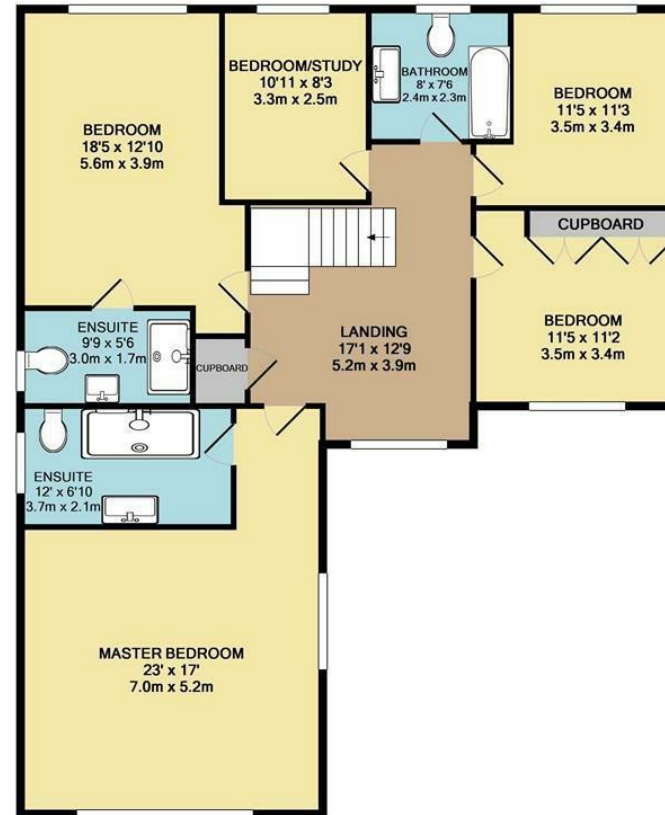
Local Authority - TRAFFORD

Council Tax - G





GROUND FLOOR



1ST FLOOR

Whilst every attempt has been made to ensure the accuracy of the floor plan contained here, measurements of doors, windows, rooms and any other items are approximate and no responsibility is taken for any error, omission, or mis-statement. This plan is for illustrative purposes only and should be used as such by any prospective purchaser. The services, systems and appliances shown have not been tested and no guarantee as to their operability or efficiency can be given.
Made with Metropix ©2019



These particulars are believed to be accurate but they are not guaranteed and do not form a contract. Neither Jordan Fishwick nor the vendor or lessor accept any responsibility in respect of these particulars, which are not intended to be statements or representations of fact and any intending purchaser or lessee must satisfy himself by inspection or otherwise as to the correctness of each of the statements contained in these particulars. Any floorplans on this brochure are for illustrative purposes only and are not necessarily to scale.

Offices at: Chorlton, Didsbury, Disley, Hale, Glossop, Macclesfield, Manchester Deansgate, Manchester Whitworth Street, New Mills, Sale, Wilmslow and Withington

0161 929 9797

hale@jordanfishwick.co.uk
www.jordanfishwick.co.uk