



jordan fishwick

ALTRINCHAM
Pinewood



Pinewood, Altrincham, WA14 3JQ

£2,475,000



The Property

BRAND NEW BUILD. STUNNING FIVE BEDROOM DETACHED FAMILY HOME.

Located in the quiet cul-de-sac of Pinewood, Jordan Fishwick are proud to present for sale this stunning Neo-Victorian detached family home built to the highest specification by a renowned local developer using hand made Belgian brick with natural stone accents. The property combines exquisite interior detailing with a host of technological features designed for optimal efficiency and comfort.

In brief the property presents a well lit and welcoming entrance hall which leads you through to both the drawing room and open plan living area to rear. The open living area offers a stunning bespoke handmade kitchen opening up to a lounge/ snug area. It leads through to a boot room with DWC and utility room which provides access to the integral garage.

To the first floor there is a main bedroom with stunning fully fitted separate dressing room and ensuite with wet room. There are 3 further double bedrooms with access to two further bathrooms/ ensuites. all of with bespoke cabinetry.

The second floor presents a study and final double fifth bedroom with ensuite.

Externally there is a gated entrance with ample off road parking to front with side access to a car port. The rear garden is enclosed and private with a sunny westerly facing aspect..

Viewings are strongly advised. Council Tax Band H. EPC Rating B.

Directions

WA14 3JQ



- BRAND NEW BUILD
- 4,754 sqft Inc Garaging
- Underfloor Heating
- Five Bedroom Four Bathrooms
- Main Bedroom with Dressing Room and Ensuite
- Open Plan Living Area
- Extremely High Specification Throughout
- Garage and Carport
- Gated Entrance
- No Chain

Postcode - WA14 3JQ

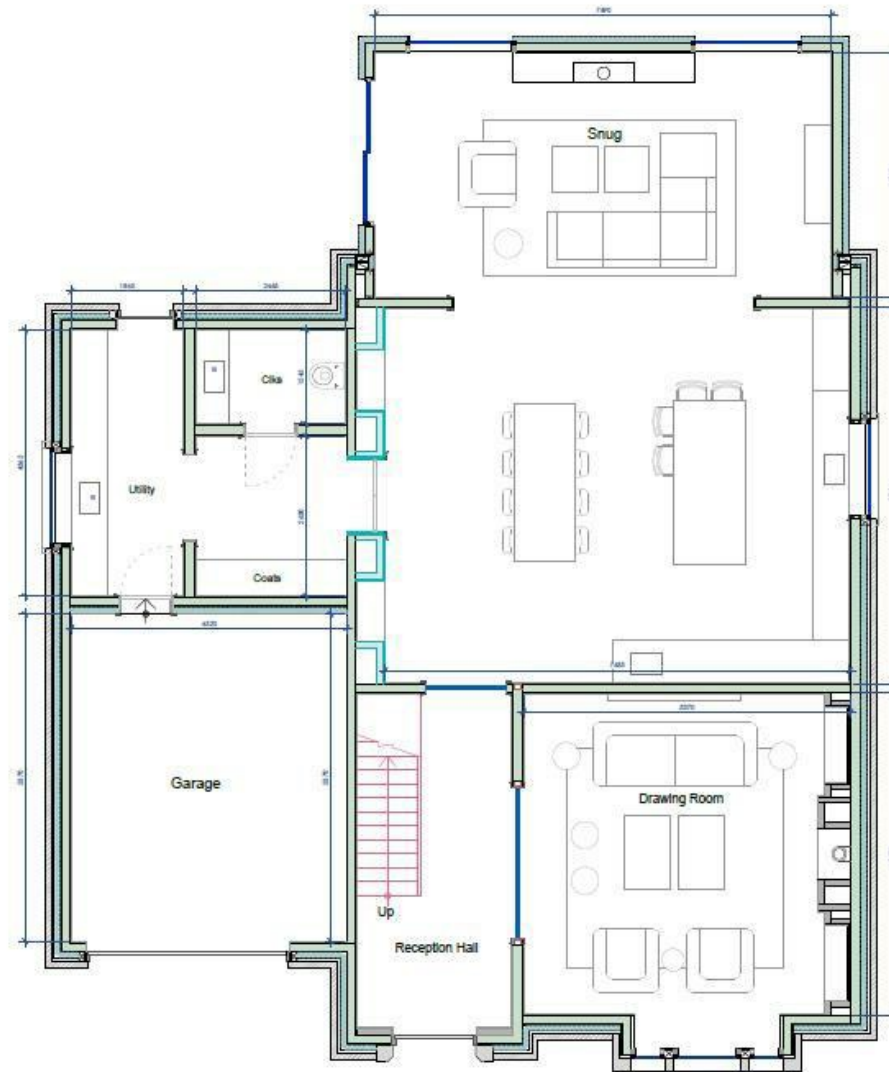
EPC Rating - B

Floor Area - 4101.00 sq ft

Local Authority - Trafford

Council Tax - H





Ground Floor Plan



These particulars are believed to be accurate but they are not guaranteed and do not form a contract. Neither Jordan Fishwick nor the vendor or lessor accept any responsibility in respect of these particulars, which are not intended to be statements or representations of fact and any intending purchaser or lessee must satisfy himself by inspection or otherwise as to the correctness of each of the statements contained in these particulars. Any floorplans on this brochure are for illustrative purposes only and are not necessarily to scale.

Offices at: Chorlton, Didsbury, Disley, Hale, Glossop, Macclesfield, Manchester Deansgate, Manchester Whitworth Street, New Mills, Sale, Wilmslow and Withington

0161 929 9797

hale@jordanfishwick.co.uk
www.jordanfishwick.co.uk