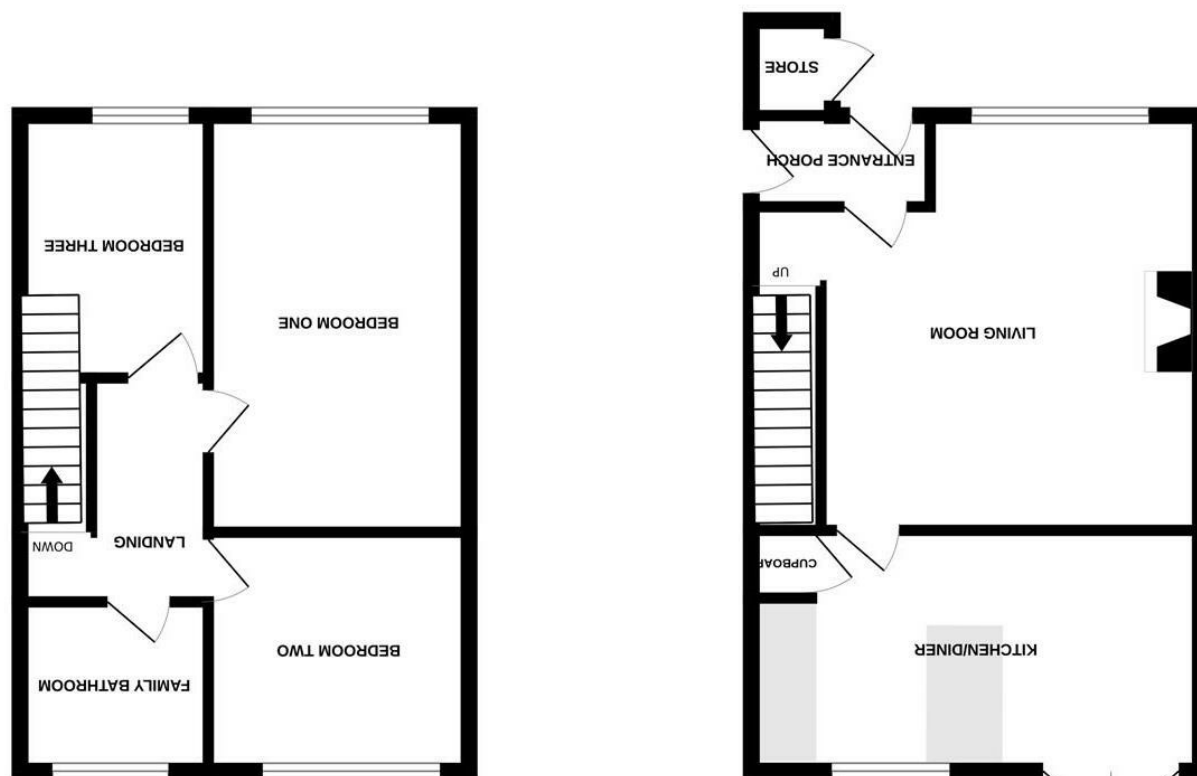


Whilst every attempt has been made to ensure the accuracy of the floorplan contained here, measurements of doors, windows, rooms and any other items are approximate and no responsibility is taken for any error, omission or misstatement. This plan is for illustrative purposes only and should be used as such by any prospective purchaser. The services, systems and appliances shown have not been tested and no guarantee as to their operability or efficiency can be given.
Made with Hexpix ©2024



These particulars are believed to be accurate but they are not guaranteed and do not form a contract. Neither Jordan Fishwick nor the vendor or lessor accept any responsibility in respect of these particulars, which are not intended to be statements or representations of fact and any intending purchaser or lessee must satisfy himself by inspection or otherwise as to the correctness of each of the statements contained in these particulars. Any floorplans on this brochure are for illustrative purposes only and are not necessarily to scale.

Offices at: Chorlton, Didsbury, Disley, Hale, Glossop, Macclesfield, Manchester Deansgate, Manchester Whitworth Street, New Mills, Sale, Wilmslow and Withington





Waveney Drive Manchester
WA14 4UQ

£1,495 PCM



The Property

*** AVAILABLE NOW *** WAVENEY DRIVE, ALTRINCHAM - Jordan Fishwick are delighted to bring to the rental market a lovely three bed semi detached property within a popular area of Altrincham. To the ground floor there is a small porch, living area, kitchen/dining area with sliding door onto low maintenance rear garden. To the first floor there are three bedrooms and a three piece family bathroom. The property also benefits from an off road parking, garage, gas central heating and permit parking. Part furnished, Excellent school catchment. Easy access to Altrincham town centre. Available now. Please contact the Hale office to arrange viewings 0161 929 9898 option 2.

Directions

WA14 4UQ



- THREE BEDROOMS
- SEMI DETACHED
- OFF ROAD PARKING
- GARAGE
- UNFURNISHED
- COUNCIL TAX BAND D

Postcode - WA14 4UQ

EPC Rating - D

Floor Area - sq ft

Local Authority - Trafford Borough Council -
House Moving

Council Tax - D

