



*jordan fishwick*

ALTRINCHAM  
Pinelea



# Pinelea, Altrincham, WA15 8WG

£599,950



## The Property

Jordan Fishwick are pleased to offer for sale this larger design town house on this popular Development by Wimpey Homes, ideally located within walking distance of both Hale Village with its range of fashionable shops, eateries and bars and Altrincham Town Centre, its facilities, the Metrolink and the popular Market Quarter. The property boasts two good reception rooms, in addition to the dining kitchen with conservatory living area, downstairs WC, and four bedrooms that are served by two bath/shower rooms. With off street parking for two cars to the front and a good-sized south facing garden to the rear, this property is a low maintenance home offering living space over three floors. Viewing is highly recommended.

## Directions

WA15 8WG



Map data ©2024 Google

- Dining Kitchen
- 4 Bedrooms
- 2 Reception Rooms
- South Facing Garden
- Utility Room
- Conservatory
- Off Road Parking
- Gas Central Heating

Postcode - WA15 8WG

EPC Rating - C

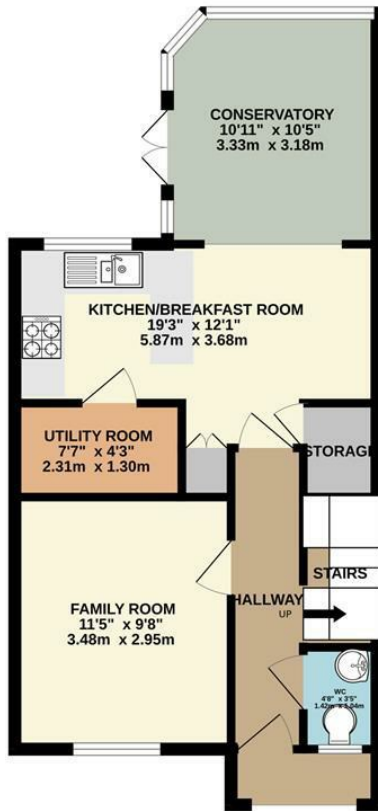
Floor Area - 1602.00 sq ft

Local Authority - Trafford

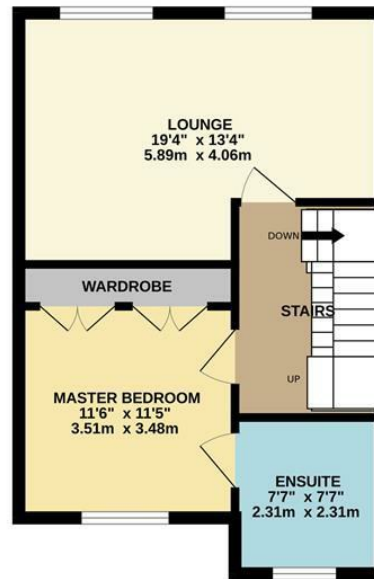
Council Tax - F



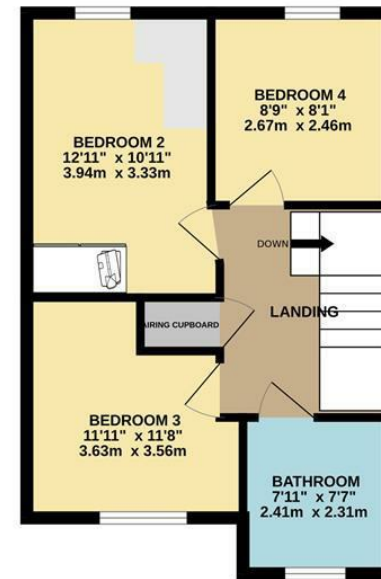
GROUND FLOOR



1ST FLOOR



2ND FLOOR



Whilst every attempt has been made to ensure the accuracy of the floorplan contained here, measurements of doors, windows, rooms and any other items are approximate and no responsibility is taken for any error, omission or mis-statement. This plan is for illustrative purposes only and should be used as such by any prospective purchaser. The services, systems and appliances shown have not been tested and no guarantee as to their operability or efficiency can be given.  
Made with Metropix ©2024



These particulars are believed to be accurate but they are not guaranteed and do not form a contract. Neither Jordan Fishwick nor the vendor or lessor accept any responsibility in respect of these particulars, which are not intended to be statements or representations of fact and any intending purchaser or lessee must satisfy himself by inspection or otherwise as to the correctness of each of the statements contained in these particulars. Any floorplans on this brochure are for illustrative purposes only and are not necessarily to scale.

Offices at: Chorlton, Didsbury, Disley, Hale, Glossop, Macclesfield, Manchester Deansgate, Manchester Whitworth Street, New Mills, Sale, Wilmslow and Withington

0161 929 9797

hale@jordanfishwick.co.uk  
www.jordanfishwick.co.uk