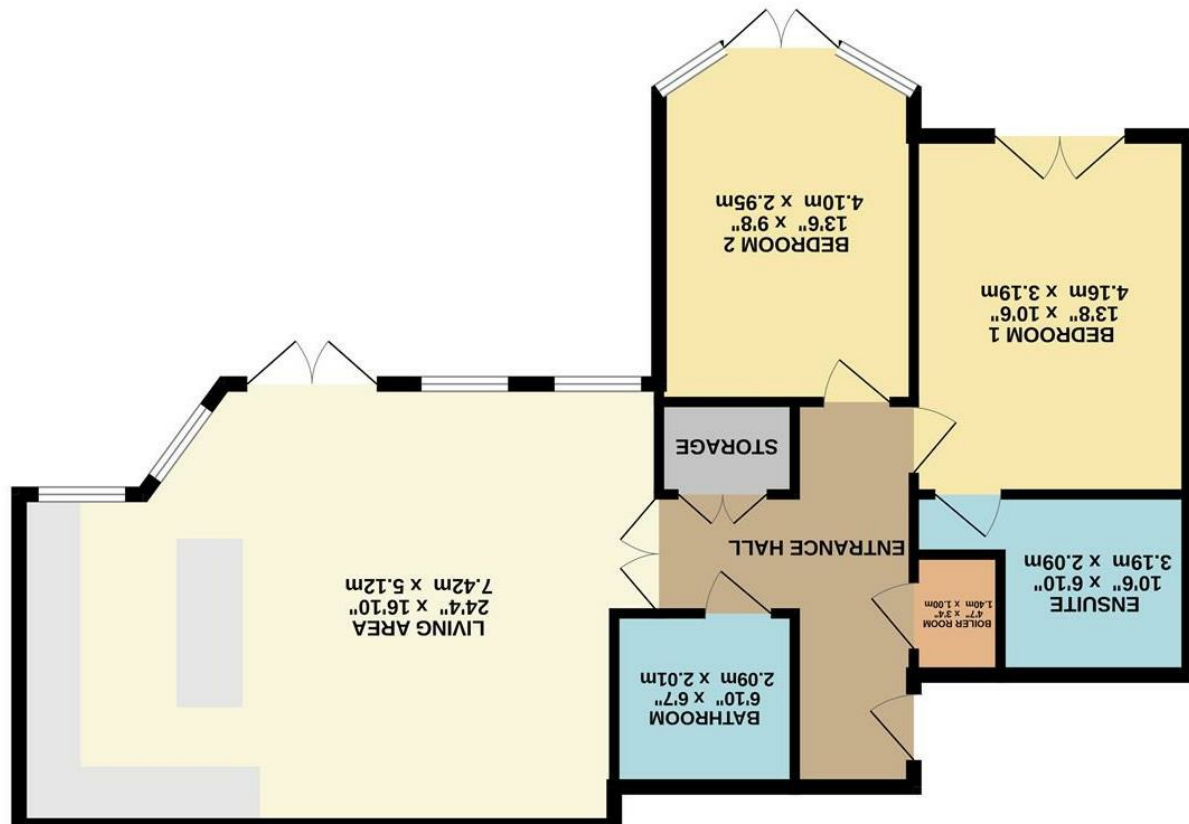


Whilst every attempt has been made to ensure the accuracy of the floorplan contained here, measurements of doors, windows, rooms and any other items are approximate and no responsibility is taken for any error, omission or mis-statement. This plan is for illustrative purposes only and should be used as such by any prospective purchaser. The services, systems and appliances shown have not been tested and no guarantee as to their operability or efficiency can be given.
 Made with Hergoika ©2024



These particulars are believed to be accurate but they are not guaranteed and do not form a contract. Neither Jordan Fishwick nor the vendor or lessor accept any responsibility in respect of these particulars, which are not intended to be statements or representations of fact and any intending purchaser or lessee must satisfy himself by inspection or otherwise as to the correctness of each of the statements contained in these particulars. Any floorplans on this brochure are for illustrative purposes only and are not necessarily to scale.

Offices at: Chorlton, Didsbury, Disley, Hale, Glossop, Macclesfield, Manchester Deansgate, Manchester Whitworth Street, New Mills, Sale, Wilmslow and Withington





Suffolk Road Altrincham WA14 4QX

£425,000



The Property

A luxury garden apartment situated within the prestigious development of Ellerslie, located within close proximity to Altrincham Town Centre and Hale Village with their excellent range of amenities. One of ten purpose built modern apartments with a generous Kitchen living area and patio doors to outdoor space, two double bedrooms, the principal with an ensuite and there is also a main bathroom. Private patio area to the rear, communal gardens and two allocated parking spaces. NO ONWARD CHAIN.

Directions

WA14 4QX



- Stunning Garden Apartment
- Lift Access
- Patio Area
- Council Tax Band E
- 2 Allocated Parking Spaces
- EPC Rating C
- Gated Entrance
- Open Plan Kitchen Living Area
- No Chain
- Share of Freehold

Postcode - WA14 4QX

EPC Rating - C

Floor Area - 867.00 sq ft

Local Authority - Trafford

Council Tax - E

