



jordan fishwick

ALTRINCHAM
Alder Drive



**Alder Drive,
Altrincham, WA15 7YG**

Asking Price £700,000



The Property

A stunning and recently extended good sized four bedroom detached family home with ample living space, sits within an extremely sought after and peaceful residential area of Timperley.

The property is located on a corner plot with a sunny south facing garden and views of fields to the rear offering privacy and a peaceful setting.

On the ground floor, the property boasts a good sized porch with cloak area, hallway, DWC, three receptions rooms, an extended Kitchen Breakfast area with island and Conservatory. To the first floor there are 4 double bedrooms, 3 of which include an Ensuite and a further main bathroom.

Outside offers block paved off road parking with a wall mounted electric car charge point and access to enclosed rear garden with alarmed motion detectors and CCTV to offer peace of mind.

Viewings are advised to appreciate this great sized and beautiful family home.

Directions

WA15 7YG



- Recently Extended Detached Home
- Recently fitted Kitchen Breakfast Room
- 4 Double Bedrooms
- EPC Rating C
- South facing enclosed private rear garden
- Council Tax Band E
- 3 Receptions rooms
- Electric wall mounted car charger
- Modern Throughout
- View of fields to rear



Postcode - WA15 7YG

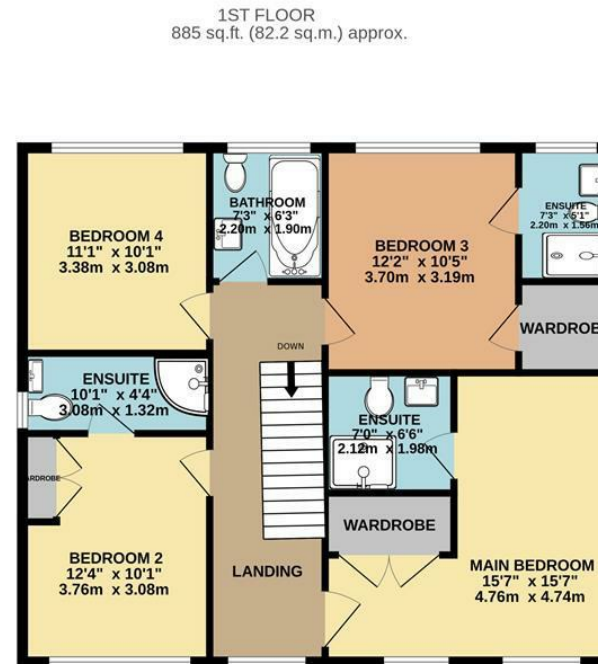
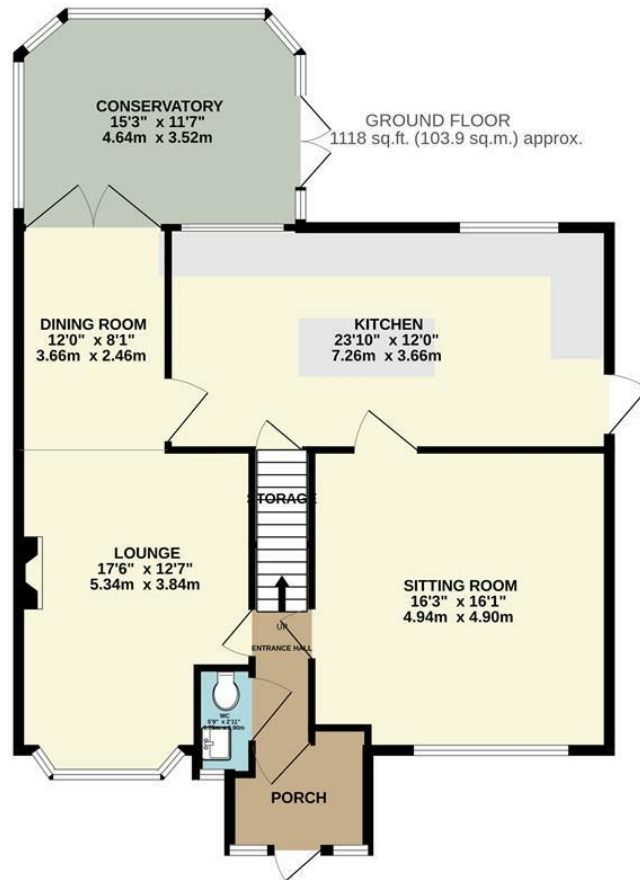
EPC Rating - C

Floor Area - 2003.00 sq ft

Local Authority - Trafford

Council Tax - E





TOTAL FLOOR AREA: 2003 sq.ft. (186.1 sq.m.) approx.

Whilst every attempt has been made to ensure the accuracy of the floorplan contained here, measurements of doors, windows, rooms and any other items are approximate and no responsibility is taken for any error, omission or mis-statement. This plan is for illustrative purposes only and should be used as such by any prospective purchaser. The services, systems and appliances shown have not been tested and no guarantee as to their operability or efficiency can be given.
Made with Metropix ©2023



These particulars are believed to be accurate but they are not guaranteed and do not form a contract. Neither Jordan Fishwick nor the vendor or lessor accept any responsibility in respect of these particulars, which are not intended to be statements or representations of fact and any intending purchaser or lessee must satisfy himself by inspection or otherwise as to the correctness of each of the statements contained in these particulars. Any floorplans on this brochure are for illustrative purposes only and are not necessarily to scale.

Offices at: Chorlton, Didsbury, Disley, Hale, Glossop, Macclesfield, Manchester Deansgate, Manchester Whitworth Street, New Mills, Sale, Wilmslow and Withington

0161 929 9797

hale@jordanfishwick.co.uk
www.jordanfishwick.co.uk