



| Chesham House | Bowdon



JORDAN FISHWICK  
EXCLUSIVE





£3,250 PCM



\*\*\* AVAILABLE NOW \*\*\* Chesham House, Bowdon - A MAGNIFICENT FIRST FLOOR APARTMENT IN A PRESTIGIOUS DEVELOPMENT CLOSE TO HALE VILLAGE. The original mansion house was converted into 9 apartments by renowned Developer Belmont Homes in 2005, and the apartment retains the large rooms, 10ft ceiling heights and features one would expect from a building of this age, which are complimented by a very high quality, contemporary finish. Large living/dining room with wooden flooring, stylish fitted kitchen, doors leading to the private terrace, extensive master bedroom with en-suite and storage, two additional double bedrooms, and family bathroom. The building sits behind secure electric gates, with underground parking for residents, and is surrounded by immaculate communal gardens. A LUXURY APARTMENT OF THE VERY HIGHEST QUALITY. CONTACT THE OFFICE FOR ADDITIONAL INFORMATION AND TO ARRANGE A VIEWING 0161 929 9898 option 2. Available NOW, Furnishings are negotiable.





- 3 Double Bedrooms
- 2 allocated underground car parking spaces

- 2 Bathrooms
- Exquisite finish throughout

- Large Sun terrace
- Available Now

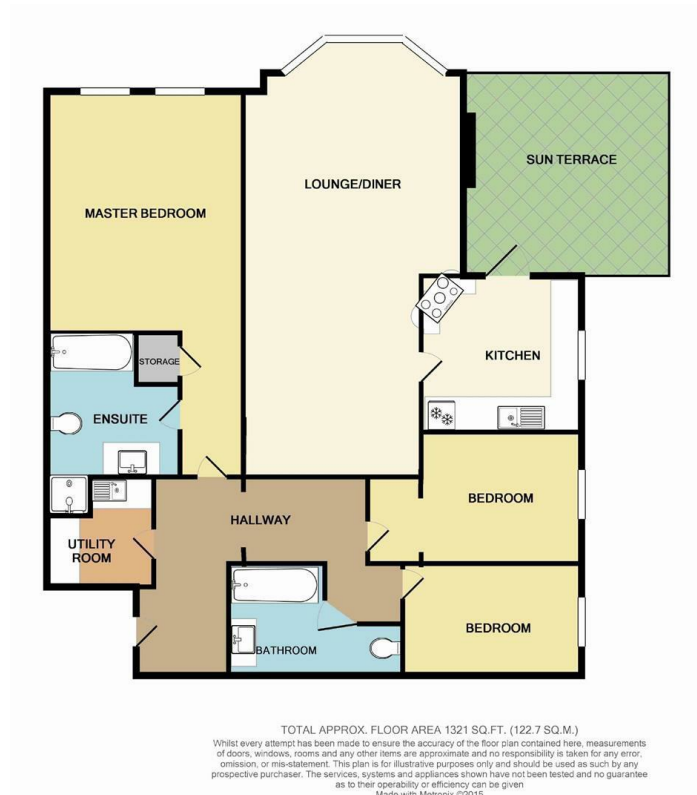
[www.jfexclusive.co.uk](http://www.jfexclusive.co.uk)

[hale@jordanfishwick.co.uk](mailto:hale@jordanfishwick.co.uk)



JORDAN FISHWICK  
EXCLUSIVE

0161 929 9797



Jordan Fishwick  
172 Ashley Road  
Altrincham  
Cheshire  
WA15 9SF

[hale@jordanfishwick.co.uk](mailto:hale@jordanfishwick.co.uk)

IMPORTANT: we would like to inform prospective purchasers that these sales particulars have been prepared as a general guide only. A detailed survey has not been carried out, nor the services, appliances and fittings tested. Room sizes should not be relied upon for furnishing purposes and are approximate. If floor plans are included, they are for guidance only and illustration purposes only and may not be to scale. If there are any important matters likely to affect your decision to buy, please contact us before viewing the property.