



jordan fishwick

ALTRINCHAM
Hale Road



Hale Road, Altrincham, WA15 8RD

Offers Over £800,000



The Property

NO ONWARD CHAIN. Jordan Fishwick are proud to showcase this luxury ground floor apartment in the highly desirable development, The Residence. This property is ideally located between Hale and Hale Barns, as well as, transport connections and amenities.

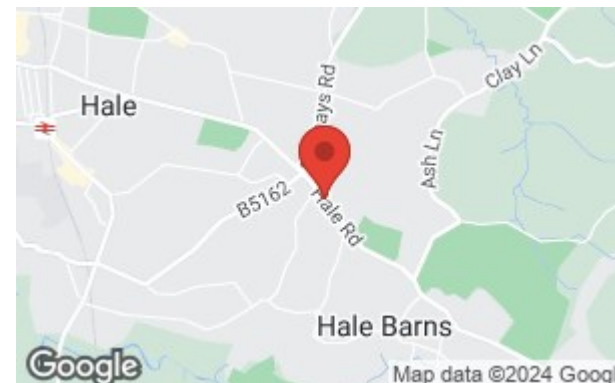
In brief the apartment consists of a large open hallway which leads to: lounge diner, kitchen breakfast room, two double bedrooms with fitted wardrobes and ensuites, a utility room and separate W.C. There is access to a terraced area, which is private to the apartment and further access to communal grounds.

The apartment further benefits from underground parking and a garage. There is also lift access to all floors and gated entrances to front and rear of the development.

Viewings are strongly advised to truly appreciate this stunning apartment.

Directions

WA15 8RD



- No Onward Chain
- Luxury Ground Floor Apartment
- 2 Double Bedrooms with En-suites
- Access to terrace area for Sole use by the apartment and commncal grounds
- Underground Parking and Garage
- Lift Access
- Utility Room
- Sought After Location
- Gated Entrnace to Development

Postcode - WA15 8RD

EPC Rating - D

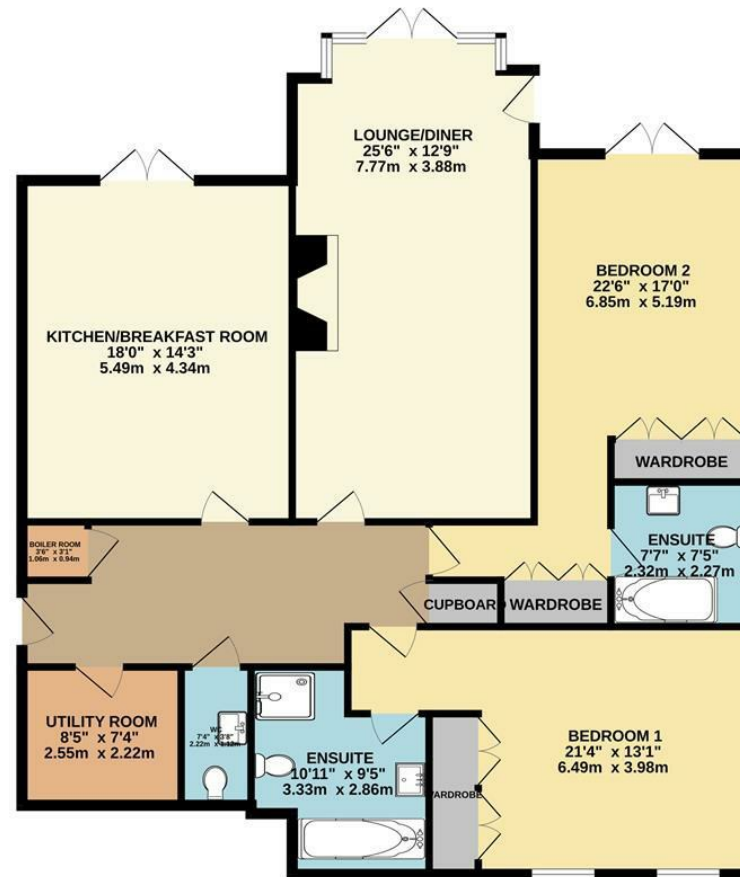
Floor Area - 1474.00 sq ft

Local Authority - Trafford

Council Tax - G



GROUND FLOOR



2 BED GROUND FLOOR APARTMENT

Whilst every attempt has been made to ensure the accuracy of the floorplan contained here, measurements of doors, windows, rooms and any other items are approximate and no responsibility is taken for any error, omission or mis-statement. This plan is for illustrative purposes only and should be used as such by any prospective purchaser. The services, systems and appliances shown have not been tested and no guarantee as to their operability or efficiency can be given.
Made with Metropix 5/2023



These particulars are believed to be accurate but they are not guaranteed and do not form a contract. Neither Jordan Fishwick nor the vendor or lessor accept any responsibility in respect of these particulars, which are not intended to be statements or representations of fact and any intending purchaser or lessee must satisfy himself by inspection or otherwise as to the correctness of each of the statements contained in these particulars. Any floorplans on this brochure are for illustrative purposes only and are not necessarily to scale.

Offices at: Chorlton, Didsbury, Disley, Hale, Glossop, Macclesfield, Manchester Deansgate, Manchester Whitworth Street, New Mills, Sale, Wilmslow and Withington

0161 929 9797

hale@jordanfishwick.co.uk
www.jordanfishwick.co.uk