



Jordan fishwick

ALTRINCHAM
Chesham Place



Chesham Place, Altrincham, WA14 2JL

Offers Over £650,000



The Property

A magnificent first floor apartment with lift access in a prestigious gated development being just a stones throw from Hale village. *** NO ONWARD CHAIN***

The original mansion house was converted into just nine apartments by renowned Developer Belmont Homes in 2005. The apartment retains the large rooms, 10ft ceiling heights and features, which are complimented by a very high quality, contemporary finish. Large living/dining room with wooden flooring and bay window, stylish fitted kitchen, extensive main bedroom with a four piece En-suite, a further generous double bedroom with built in wardrobes, and also a third bedroom. Finally you have a shower room and separate utility room. The building sits behind secure electric gates and is surrounded by immaculate communal gardens with allocated parking.

Directions

WA14 2JL



- 2nd Floor Apartment
- No Chain
- Underground Parking
- Shower room and 4 piece En-suite
- Gated Entrance
- Communal Gardens
- Utility Room
- Walking Distance to Hale and Altrincham
- Lift Access
- Modern Throughout

Postcode - WA14 2JL

EPC Rating - C

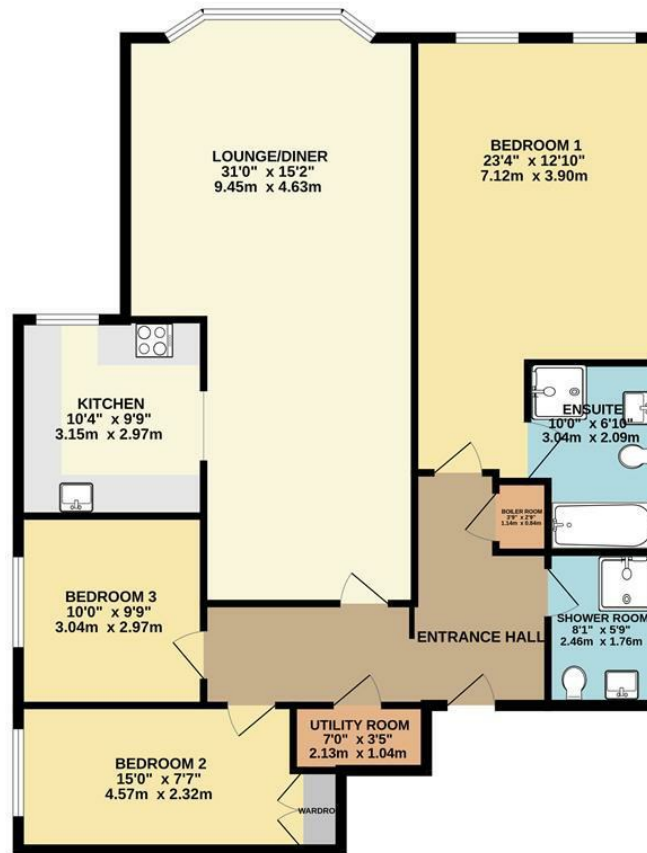
Floor Area - 1259.00 sq ft

Local Authority - Trafford

Council Tax - G



GROUND FLOOR



3 BEDROOM 2 BATHROOMS

Whilst every attempt has been made to ensure the accuracy of the floorplan contained herein, measurements of doors, windows, rooms and any other items are approximate and no responsibility is taken for any error, omission or mis-statement. This plan is for illustrative purposes only and should be used as such by any prospective purchaser. The services, systems and appliances shown have not been tested and no guarantee as to their operability or efficiency can be given.
Made with Metroplan 5.00221



These particulars are believed to be accurate but they are not guaranteed and do not form a contract. Neither Jordan Fishwick nor the vendor or lessor accept any responsibility in respect of these particulars, which are not intended to be statements or representations of fact and any intending purchaser or lessee must satisfy himself by inspection or otherwise as to the correctness of each of the statements contained in these particulars. Any floorplans on this brochure are for illustrative purposes only and are not necessarily to scale.

Offices at: Chorlton, Didsbury, Disley, Hale, Glossop, Macclesfield, Manchester Deansgate, Manchester Whitworth Street, New Mills, Sale, Wilmslow and Withington

0161 929 9797

hale@jordanfishwick.co.uk
www.jordanfishwick.co.uk