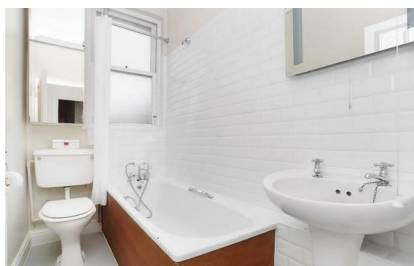




M&M
PROPERTY

Newington Green, N16

£334 Per Week



A beautifully finished one bed period conversion, comprising well proportioned reception with delightful views over Newington Green, fitted kitchen/breakfast room, spacious double bedroom with fitted storage, and tiled bathroom, with wall mounted shower over the bath. With benefits including gas central heating and double glazing, this charming home further features wood floors, high ceilings, and a beautiful original fireplace, fireplace as the centrepiece for the reception room. With a plethora of bus routes on your doorstep and Canonbury Overground Station just a short walk from your front door, the transport links are second to none, connecting to The City and West End.

Newington Green is a village like part of Islington that has a warm sense of community in this leafy environment, making it a very pleasant and quiet place to live, and provides a wide range of local shops and amenities.

Furnishings: Furnished

Available Now

**FOR FURTHER
INFORMATION**

**Please call
M & M PROPERTY
on 020 7704 0664**

M&M Property | Sales, Lettings and Property Management

T 020 7704 0664 | F 020 7704 0736 | enquiries@mandmproperty.co.uk


97 Newington Green Road, Islington, London N1 4QX | mandmproperty.co.uk




- One Bedroom
- Separate Kitchen
- High Ceilings
- Beautiful Finish
- Furnished

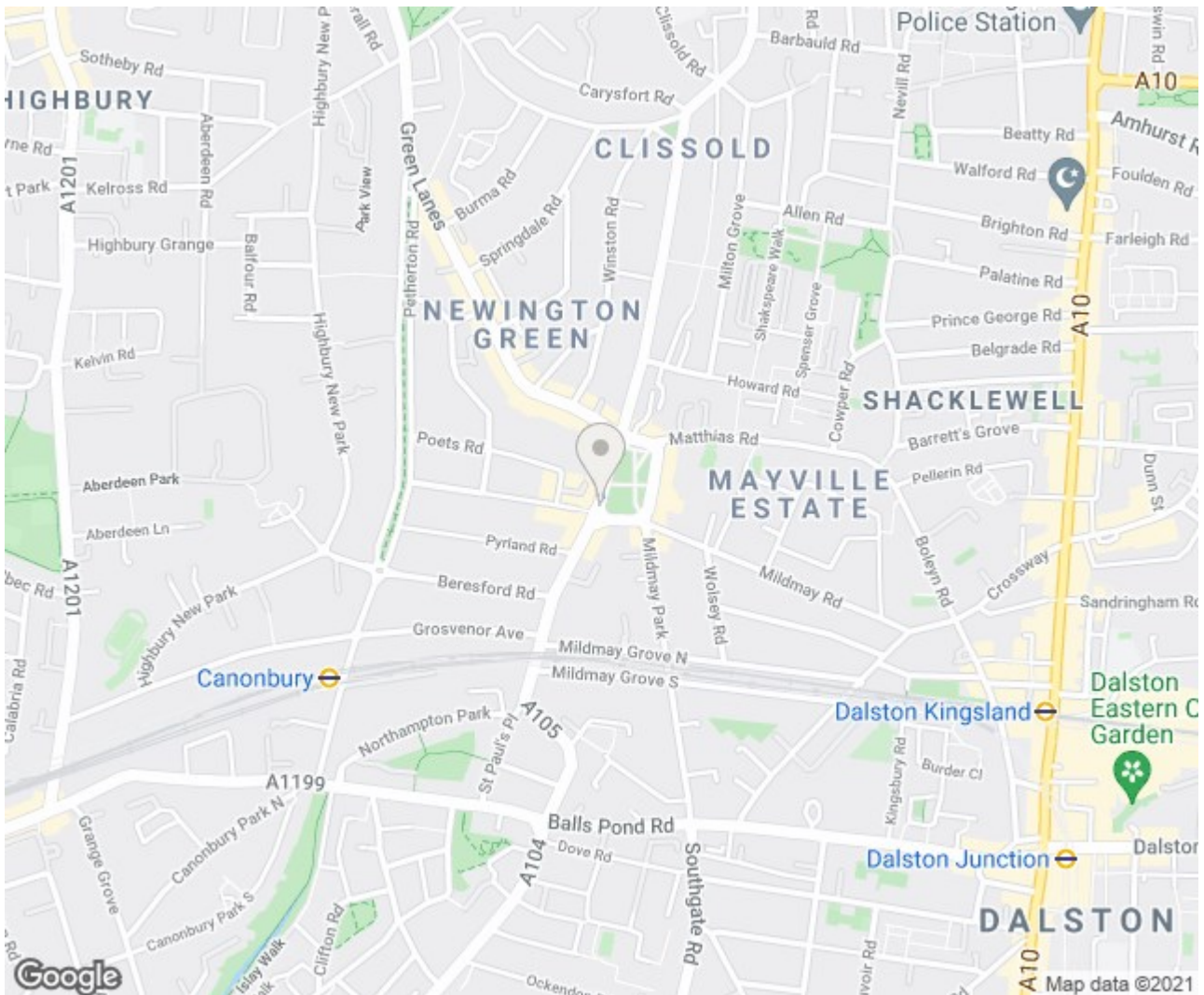
- Period Conversion
- Spacious Bedroom with Storage
- Original Fireplace
- Newington Green, N16
- Available Now

Energy Efficiency Rating

	Current	Potential
Very energy efficient - lower running costs		
(92 plus) A		
(81-91) B		
(69-80) C		
(55-68) D		
(39-54) E		
(21-38) F		
(1-20) G		
Not energy efficient - higher running costs		
England & Wales	EU Directive 2002/91/EC	

Environmental Impact (CO₂) Rating

	Current	Potential
Very environmentally friendly - lower CO ₂ emissions		
(92 plus) A		
(81-91) B		
(69-80) C		
(55-68) D		
(39-54) E		
(21-38) F		
(1-20) G		
Not environmentally friendly - higher CO ₂ emissions		
England & Wales	EU Directive 2002/91/EC	



For clarification we wish to inform prospective purchasers that we have prepared these sales particulars as a general guide. We have not carried out a detailed survey, nor tested the services, appliances and specific settings. Room Sizes are approximate and believed to be accurate within inches and they should not be relied upon for carpets and furnishings.