



Hesselby View, Broughton, MK10 7JN

Price £550,000 Freehold



A four bedroom semi detached SMART HOME with views to the front over an area of green open space with trees, and approximately 1,367 sq. ft. of accommodation over three floors.



Hesselby View

Broughton, MK10 7JN



The property is situated approximately 1 mile from Milton Keynes Coachway. The property is situated within the Walton High (Broughton Campus), Broughton Fields schools' and Brooklands Farm Primary School catchment areas. Willen Lake is approximately 1.5 miles away. The Kingston Centre is also approximately 1.5 miles away with a large selection of shops including Tesco and Boots and popular restaurants..

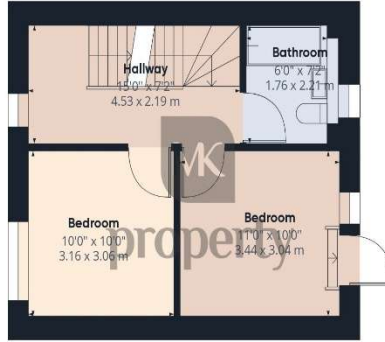


As you enter this fabulous home you are immediately attracted to the large open space of the living/dining/kitchen room leading to a further built in cupboard and cloakroom. To the rear is an attractive low maintenance rear garden.

On the first floor there are two double bedrooms. Bedroom two accesses a balcony, with room for seating, overlooking the garden, bedroom three has a built-in wardrobe and there is a family bathroom with a three piece suite. On the second floor is the master bedroom with an en suite shower room and bedroom four, which has a built-in cupboard; there is further storage.



Ground Floor



Floor 1



Floor 2

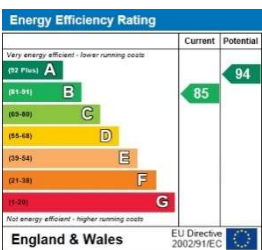
Approximate total area⁽¹⁾
812.89 ft²
75.52 m²

(1) Excluding balconies and terraces

While every attempt has been made to ensure accuracy, all measurements are approximate, not to scale. This floor plan is for illustrative purposes only.

GIRAFFE360





Notice

Please note we have not tested any apparatus, fixtures, fittings, or services. Interested parties must undertake their own investigation into the working order of these items. All measurements are approximate and photographs provided for guidance only.



The Old Manse
73 High Street
Newport Pagnell
MK16 8AB

T: 01908 373580
E: sales@mkproperty.org

