

## Mayplace Road East, , Bexleyheath, DA7 6DJ

- Chain Free
- Beautiful communal gardens
- Well presented
- One bedroom
- Floor Area: 460.5 sq ft
- Ground floor flat
- Light & airy
- Great access to buses to/from Bexleyheath Broadway
- Call Hunters to View!
- EPC Rating: C

**Offers Over £140,000**



# Mayplace Road East, , Bexleyheath, DA7 6DJ

## DESCRIPTION

\*\* RETIREMENT PROPERTY. OVER 55's ONLY \*\*

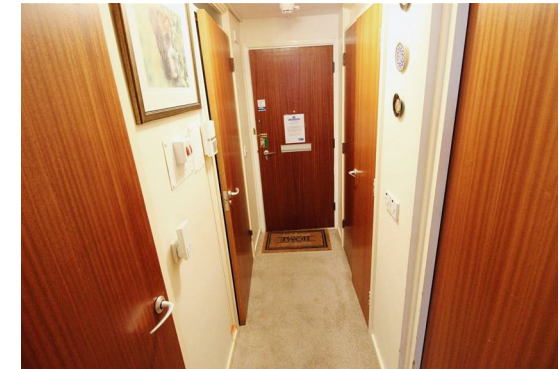
Hunters estate agents are delighted to offer to the market this lovely one bedroom ground floor retirement apartment which is offered to the market CHAIN FREE.

Miller Court is a very popular retirement development offering communal gardens to enjoy and a spacious communal lounge where residents can socialise. There is also a very handy laundry room.

The accommodation comprises of a spacious lounge/dining room. There is a kitchen, shower room and a good size double bedroom with fitted wardrobes.

Externally there is residents parking and well maintained communal gardens.

Call Hunters now to arrange your viewing!





## Ground Floor

Approx. 460.5 sq. feet



Total area: approx. 460.5 sq. feet

### Viewings

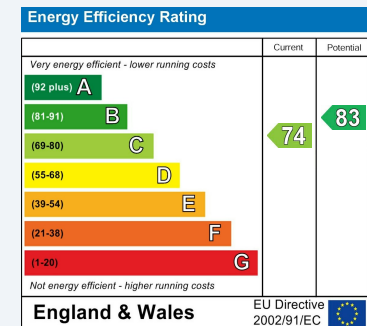
Please contact [bexleyheath@hunters.com](mailto:bexleyheath@hunters.com), if you wish to arrange a viewing appointment for this property or require further information.

### Valuations

For a valuation of your property, please email the team with your property details, contact information and the times you are available.

## ENERGY PERFORMANCE CERTIFICATE

The energy efficiency rating is a measure of the overall efficacy of a home. The higher the rating the more energy efficient the home is and the lower the fuel bills will be.



These particulars are intended to give a fair and reliable description of the property but no responsibility for any inaccuracy or error can be accepted and do not constitute an offer or contract. We have not tested any services or appliances (including central heating if fitted) referred to in these particulars and the purchasers are advised to satisfy themselves as to the working order and condition. If a property is unoccupied at any time there may be reconnection charges for any switched off/disconnected or drained services or appliances - All measurements are approximate.

**THINKING OF SELLING?** If you are thinking of selling your home or just curious to discover the value of your property, Hunters would be pleased to provide free, no obligation sales and marketing advice. Even if your home is outside the area covered by our local offices we can arrange a Market Appraisal through our national network of Hunters estate agents.