



Brock Street, London NW1

£695,000 Leasehold







Description

Set on the 11th floor, and extending to 561 sq ft of well-proportioned living space, the apartment offers an abundance of flowing natural light throughout, and features a glorious reception room with floor-to-ceiling windows and sliding doors leading to a full-length balcony. A modern fully-fitted kitchen includes integrated Siemens appliances, whilst a good-sized bedroom benefits from built-in wardrobes, and a family bathroom is located off a welcoming hallway.

Triton Building forms part of the Regent Place development, offers 24hr concierge services and has a number of local shops and eateries within the development. Situated with easy reach of Regents Park and Marylebone, the building is excellently located for the tranquillity offered from the park's lakes and pathways, and within easy reach of world-class dining venues & shopping locations. Local, national, and international travel connections can be found across several stations including Warren Street (0.1mi), Euston Square (0.1mi) and St Pancras (0.7mi).

Leasehold 984 years (exp. 02/09/3010)
Ground Rent: Approx. £350 pa
Service Charge: Approx. £7,002 pa
Council Tax Band: D

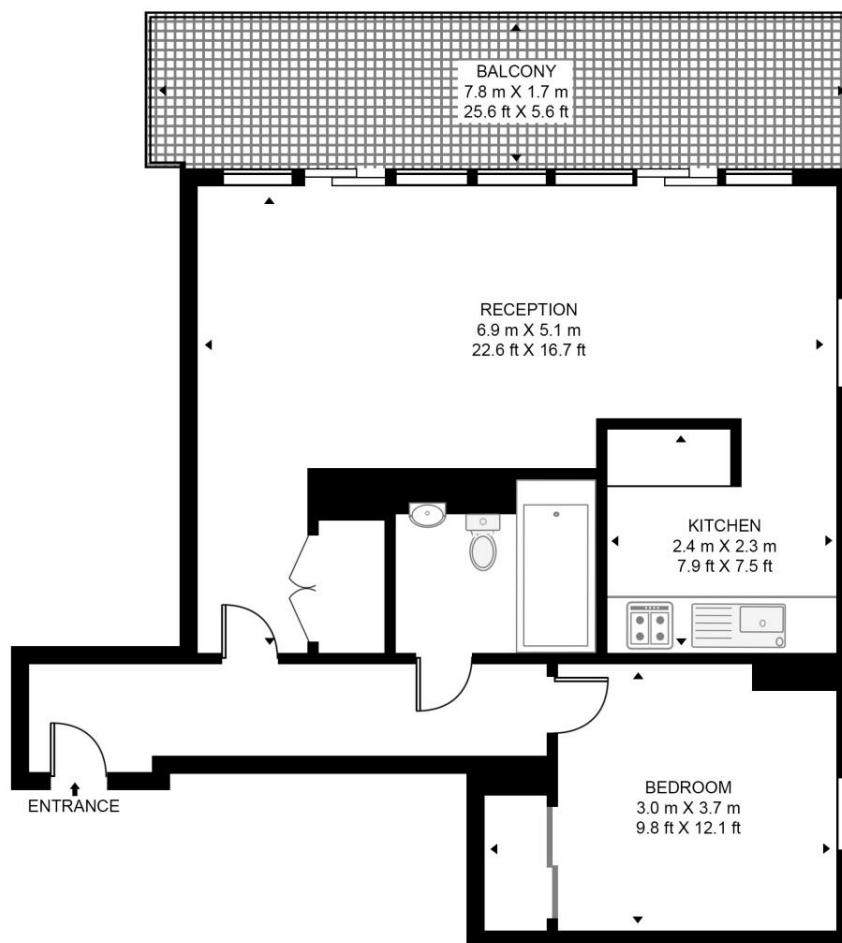
- Well-presented apartment
- 1 Double bedroom
- 1 Bathroom
- Kitchen with built-in Siemens appliances
- Large private balcony
- 11th floor
- Lift
- 24 Hour concierge
- Close to Regents Park
- Ideally located for the medical colleges

Floorplan

561 sq ft | 52 sq m

TRITON BUILDING

APPROXIMATE GROSS INTERNAL FLOOR AREA 561 SQ.FT (52.1 SQ.M)



ELEVENTH FLOOR



HDVA

This floor plan has been defined by the RICS Code of Measurement. This floor plan and all others are for approximate representative purposes only and upon usage is agreed to as such by the client.

WWW: hdvirtualart.com | TEL: 0203.974.1567 | EMAIL: info@hdvirtualart.com

Mayfair and Marylebone
St George Street,
London W1S 2FQ
+44 207 399 5550
mayfair@jll.com

Urban living, your way.

jll.co.uk/residential

© 2019 Jones Lang LaSalle IP, Inc. All rights reserved. All information contained herein is from sources deemed reliable; however, no representation or warranty is made to the accuracy thereof.

