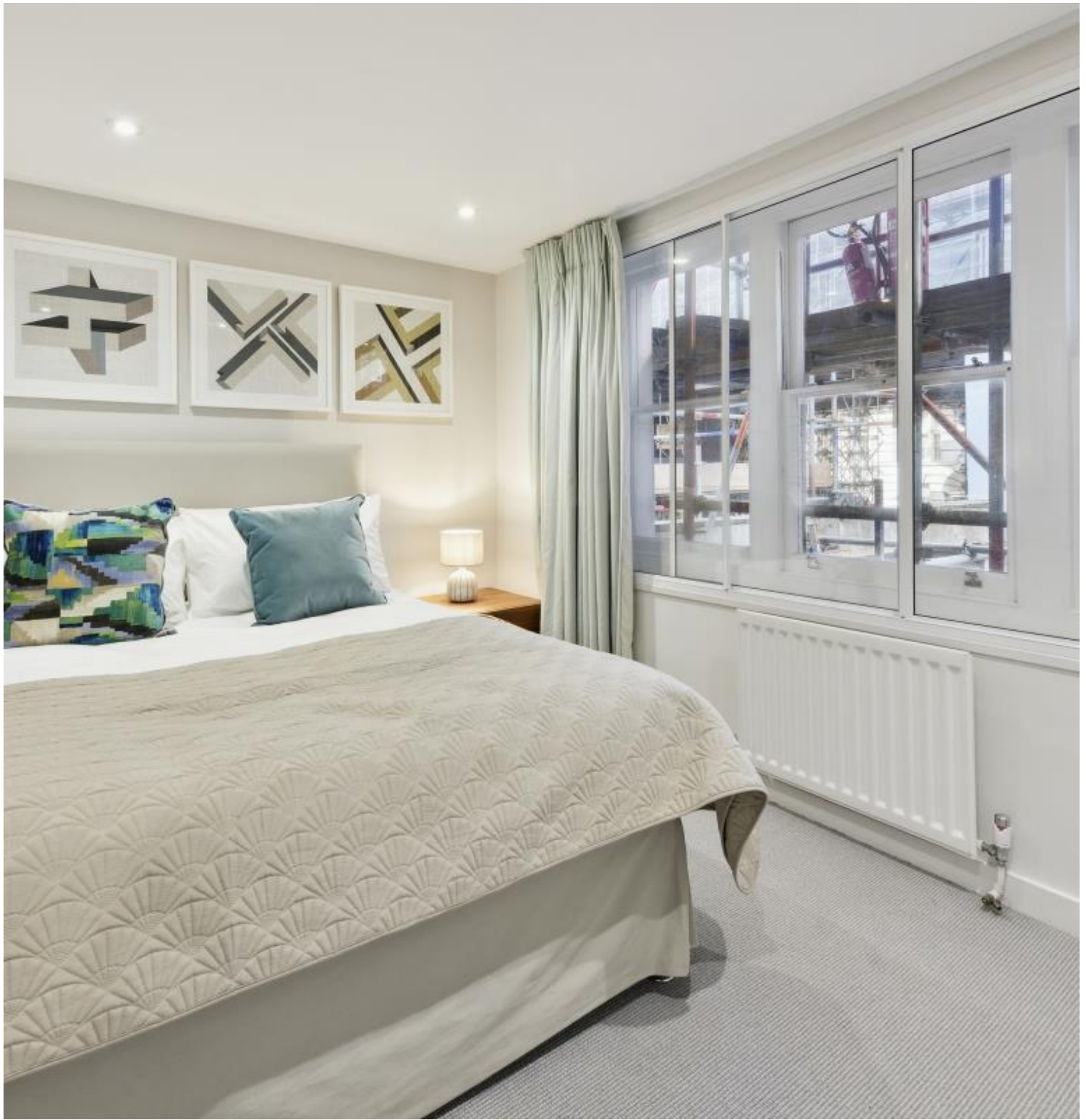




Great Portland Street, London W1W

Price £575 per week - Furnished





Description

A beautifully appointed Duplex apartment in a desirable development close to Regent's Street. This modern apartment is fitted with a contemporary open-plan kitchen, a double bedroom with built-in wardrobes, and a modern bathroom suite. The apartment also features contemporary furniture throughout, wooden flooring, ample storage, and secondary glazing.

Great Portland Street is conveniently located with a variety of transport links such as Oxford Circus, Goodge Street Station, and Great Portland Street. This fabulous location also offers an amazing choice of restaurants, bars as well as shopping facilities all within a short stroll.

Rent is payable on a monthly basis and you may be required to pay more than a month's rent in advance, depending on your circumstances. You will be required to pay a 1 week holding deposit following a successful offer. Utility bills, council tax, telephone line and broadband are not included in the rent. As well as paying the rent, you may also be required to make some additional permitted payments. If your tenancy does not qualify as an AST, additional fees may apply. Please visit jll.co.uk/fees for details of fees which may be payable when renting a property.

- Available Now
 - Duplex Apartment
 - Secondary Glazing
 - Period Features
 - Open-Plan Kitchen
 - Wooden Flooring
 - Furnished
 - Period Features
 - Council tax: Band D
 - Deposit amount: £2,875
-

Floorplan

430 sq ft | 40 sq m

Mayfair and Marylebone
13a St George Street,
London W1S 2FQ
+44 207 399 5550
mayfair@jll.com

Urban living, your way.

jll.co.uk/residential

© 2019 Jones Lang LaSalle IP, Inc. All rights reserved. All information contained herein is from sources deemed reliable; however, no representation or warranty is made to the accuracy thereof.

