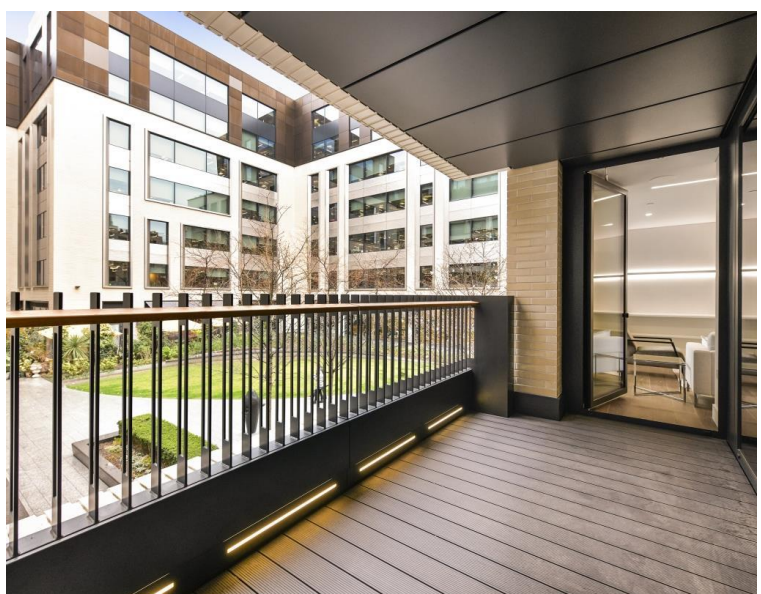




Rathbone Place, London W1T

Price £6,250 per month - Furnished







Description

Floorplan

773 sq ft | 72 sq m



This floor plan was captured for JLL Knightbridge on 06/03/2018. Architectural features to scale, derived from millions of laser scan points, accurate to +/- 3mm and produced in accordance with the Royal Institute of Chartered Surveyors Property Measurement standards. Gross Internal Area is measured from the internal faces of external walls and includes internal walls/obstructions. Net Internal Area includes internal walls/obstructions. Please perform your own checks before relying on these figures in any transaction.



Mayfair and Marylebone
St George Street,
London W1S 2FQ
+44 207 399 5550
mayfair@jll.com

Urban living, your way.

jll.co.uk/residential

© 2019 Jones Lang LaSalle IP, Inc. All rights reserved. All information contained herein is from sources deemed reliable; however, no representation or warranty is made to the accuracy thereof.

