



Mortimer Street, London W1W

Price £923 per week - Furnished





Description

A spacious apartment with two double bedrooms and lift access in a stunning building overlooking Regent Street. The property comprises a spacious reception room with a fully fitted open-plan kitchen and floor to ceiling windows overlooking Regent Street, a principal bedroom with built-in storage and en-suite shower room, a second double room and a family bathroom. The property is furnished and has wooden flooring and secondary glazing throughout.

Mortimer Street is conveniently located with a variety of transport links such as Oxford Circus, Goodge Street Station, and Great Portland Street. This fabulous location also offers amazing choice of restaurants, bars as well as shopping facilities all within a short stroll.

Rent is payable on a monthly basis and you may be required to pay more than a month's rent in advance, depending on your circumstances. You will be required to pay a 1 week holding deposit following a successful offer. Utility bills, council tax, telephone line and broadband are not included in the rent. As well as paying the rent, you may also be required to make some additional permitted payments. If your tenancy does not qualify as an AST, additional fees may apply. Please visit jll.co.uk/fees for details of fees which may be payable when renting a property.

- Spacious Apartment
- Regent Street Location
- Open-Plan Kitchen
- Two Double Bedrooms
- Furnished
- Wooden Flooring
- Secondary Glazing
- Close to Oxford Street
- Council tax: Band F
- Deposit amount: £4,615.00 (estimate) and an initial holding deposit of 1 week's rent is payable to

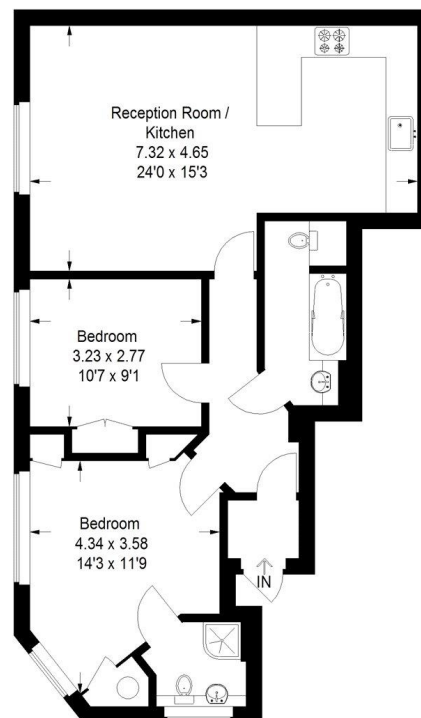


Floorplan

786 sq ft | 73 sq m

Mortimer Street, W1

Approximate Gross Internal Area
73.0 sq m / 786 sq ft



First Floor

Mayfair and Marylebone
St George Street,
London W1S 2FQ
+44 207 399 5550
mayfair@jll.com

Urban living, your way.

jll.co.uk/residential

© 2019 Jones Lang LaSalle IP, Inc. All rights reserved. All information contained herein is from sources deemed reliable; however, no representation or warranty is made to the accuracy thereof.

