



Edgware Road, London W2

Price £2,000 per month - Furnished



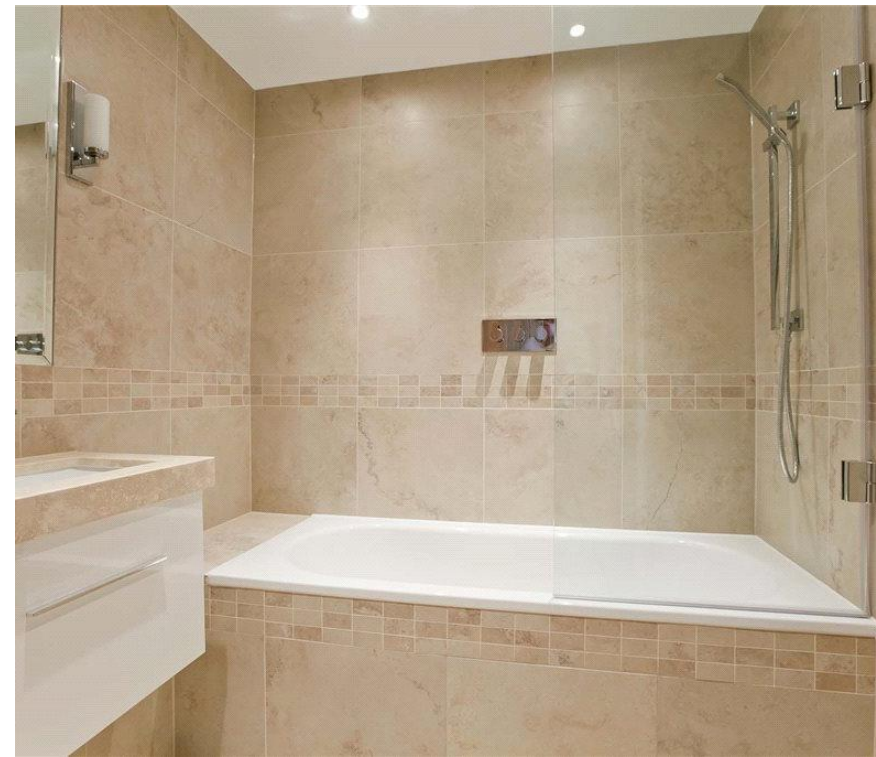


Description

A stylish seventh floor studio apartment (with lift) in this well maintained building on Edgware Road. The property comprises bedroom/reception room, bathroom and a fully fitted kitchen. Forset Court benefits from 24 hour concierge and it is conveniently located close to the many transport and shopping amenities of Edgware Road and Marble Arch.

Rent is payable on a monthly basis and you may be required to pay more than a month's rent in advance, depending on your circumstances. You will be required to pay a 1 week holding deposit following a successful offer. Utility bills, council tax, telephone line and broadband are not included in the rent. As well as paying the rent, you may also be required to make some additional permitted payments. If your tenancy does not qualify as an AST, additional fees may apply. Please visit jll.co.uk/fees for details of fees which may be payable when renting a property.

- Studio Apartment
- 24hr Concierge
- Lift Access
- Separate Kitchen
- Wooden Flooring
- Furnished
- Council Tax Band: D
- Deposit amount: £2,300 (estimate) and an initial holding deposit of 1 week's rent is payable to res



Floorplan

321 sq ft | 30 sq m



Approx. Gross Internal Area: 97.84 sq m / 521 sq ft

Studio	4.50 x 8.35 m	14'9" x 11"
Kitchen	2.74 x 1.80 m	9' x 5'9"

Mayfair and Marylebone
St George Street,
London W1S 2FQ
+44 207 399 5550
mayfair@jll.com

Urban living, your way.

jll.co.uk/residential

© 2019 Jones Lang LaSalle IP, Inc. All rights reserved. All information contained herein is from sources deemed reliable; however, no representation or warranty is made to the accuracy thereof.

