



## Princes Street, London W1B

Price £1,325 per week - Furnished







# Description

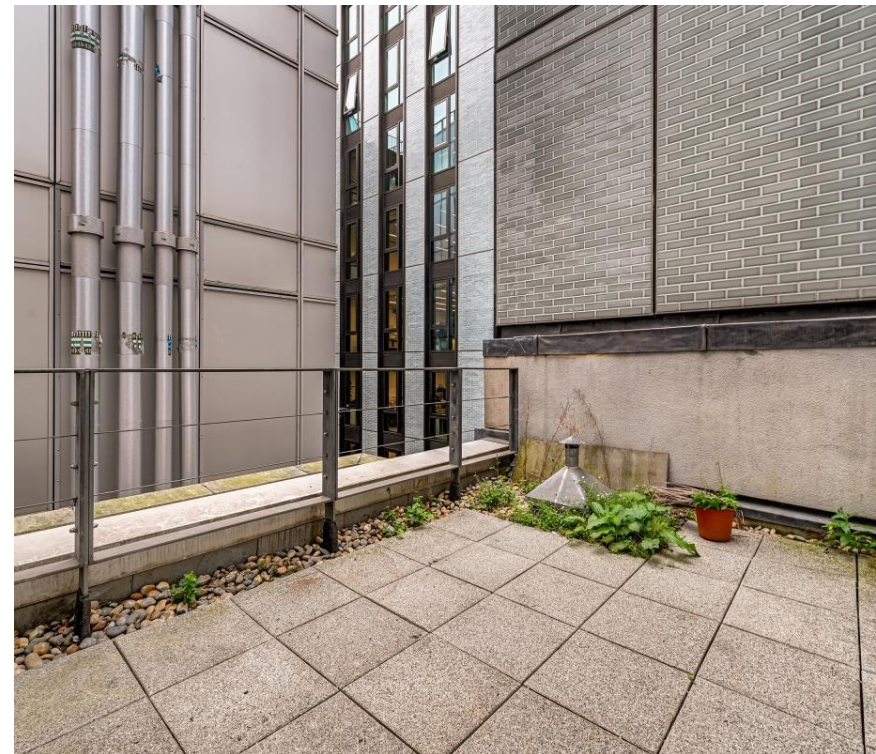
A spacious apartment with lift access located on a quiet street between Regent Street and Hanover Square.

The apartment has a spacious reception room with floor to ceiling windows and a dining area, there is a semi-open plan kitchen just off the dining area which can be closed off from the reception. The principal bedroom has built-in storage and an en-suite bathroom, there is a second double and a second bathroom. The apartment has a large private terrace, wooden flooring throughout and is offered furnished.

Princess Street is located close to Regent Street, Bons Street, and Oxford Street offering world class shopping, as well as being a short walk to the surrounding areas of Marylebone, Fitzrovia, and Soho and has excellent transport from Bond Street Elizabeth line station and Oxford Circus Station.

Rent is payable on a monthly basis and you may be required to pay more than a month's rent in advance, depending on your circumstances. You will be required to pay a 1 week holding deposit following a successful offer. Utility bills, council tax, telephone line and broadband are not included in the rent. As well as paying the rent, you may also be required to make some additional permitted payments. If your tenancy does not qualify as an AST, additional fees may apply. Please visit [jll.co.uk/fees](http://jll.co.uk/fees) for details of fees which may be payable when renting a property.

- Spacious Apartment
- Approx. 120sqm / 1,293sqft
- Private Terrace
- Lift Access
- Two Double Bedrooms
- Open-Plan Living
- Wooden Flooring
- Furnished
- Council Tax Band: H
- Deposit amount: £7,950 (estimate) and an initial holding deposit of 1 week's rent is payable to res



# Floorplan

1,293 sq ft | 120 sq m

Mayfair and Marylebone  
St George Street,  
London W1S 2FQ  
+44 207 399 5550  
[mayfair@jll.com](mailto:mayfair@jll.com)

*Urban living, your way.*

[jll.co.uk/residential](https://jll.co.uk/residential)

© 2019 Jones Lang LaSalle IP, Inc. All rights reserved. All information contained herein is from sources deemed reliable; however, no representation or warranty is made to the accuracy thereof.

