



## Ossington Buildings, London W1U

Price £540 per week - Furnished, Unfurnished





# Description

Lovely 1 bedroom flat in the heart of Marylebone. The property consist of 1 reception room, separate kitchen, 1 bedroom and 1 bathroom. The flat is within walking distance from Paddington Street Gardens and you also can benefit from the variety of shops and restaurants in Marylebone.

Having your property professionally managed by The Howard de Walden Estate not only offers exceptional levels of service and high quality, professional property management. Marylebone Village is one of central London's most distinctive and characterful shopping destinations, home to a high proportion of small, independent businesses. Residents of HDWE also benefit from access to an array of discounts within Marylebone Village, resident social opportunities and local events which make Marylebone Village a unique and vibrant place to call home.

Rent is payable on a monthly basis and you may be required to pay more than a month's rent in advance, depending on your circumstances. You will be required to pay a 1 week holding deposit following a successful offer. Utility bills, council tax, telephone line and broadband are not included in the rent. As well as paying the rent, you may also be required to make some additional permitted payments. If your tenancy does not qualify as an AST, additional fees may apply. Please visit [jll.co.uk/fees](http://jll.co.uk/fees) for details of fees which may be payable when renting a property.

- 1 Reception room
- Separate kitchen
- 1 Double bedroom
- 1 Bathroom
- Lower Ground Floor
- Unfurnished or Furnished via separate negotiation
- Professional property management
- Eligibility for local discounts in Marylebone Village
- Wifi included
- Approx. 397 sq ft ( 36.9 sq m)

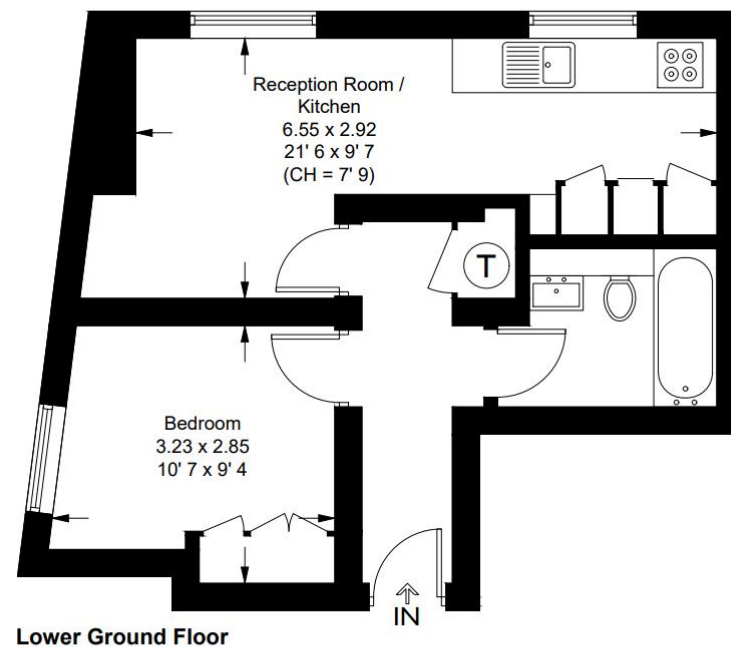


# Floorplan

397 sq ft | 37 sq m

## Ossington Buildings

Approximate Gross Internal Area = 397 sq ft / 36.9 sq m



This plan is not to scale and must be used as layout guidance only. All measurements and areas are approximate and should not be relied upon to provide accurate information. This plan must not be relied upon when making property valuations, design considerations or any other such relevant decisions. We accept no responsibility or liability (whether in contract, tort or otherwise) in relation to any loss whatsoever arising from or in connection with any use of this plan or the adequacy, accuracy or completeness of it or any information within it.

Mayfair and Marylebone  
St George Street,  
London W1S 2FQ  
+44 207 399 5550  
mayfair@jll.com

*Urban living, your way.*

[jll.co.uk/residential](http://jll.co.uk/residential)

© 2019 Jones Lang LaSalle IP, Inc. All rights reserved. All information contained herein is from sources deemed reliable; however, no representation or warranty is made to the accuracy thereof.

