



## Portman Street, London W1H

Price £665 per week - Furnished







# Description

A spacious and well-presented second floor flat in this well-maintained building just north of Oxford Street. The property comprises a spacious reception room with a fully fitted open-plan kitchen, a double bedroom with built-in storage and a bathroom with a bath and overhead shower.

The property is furnished and has wooden flooring, and double glazing throughout.

Rent is payable on a monthly basis and you may be required to pay more than a month's rent in advance, depending on your circumstances. You will be required to pay a 1 week holding deposit following a successful offer. Utility bills, council tax, telephone line and broadband are not included in the rent. As well as paying the rent, you may also be required to make some additional permitted payments. If your tenancy does not qualify as an AST, additional fees may apply. Please visit [jll.co.uk/fees](http://jll.co.uk/fees) for details of fees which may be payable when renting a property.

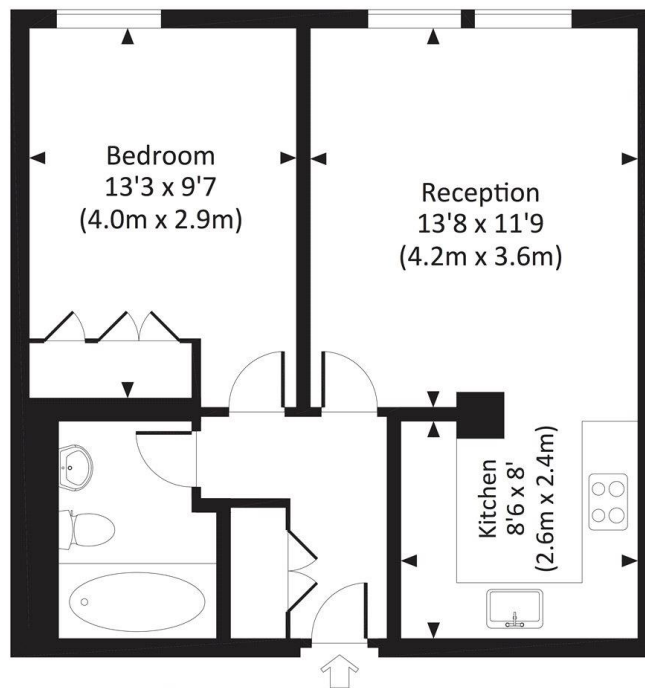
- Spacious Apartment
- Open-Plan Kitchen
- Furnished
- Wooden Flooring
- Double Glazing
- Professionally Managed
- Close to Oxford Street
- Short Walk to Marylebone High Street
- Council tax: Band F
- Deposit amount: £3,325.00 (estimate) and an initial holding deposit of 1 week's rent is payable to



# Floorplan

478 sq ft | 44 sq m

Approx. gross internal area  
478 Sq.Ft. / 44.4 Sq.M.



SECOND FLOOR

All measurements have been made in accordance with RICS Code of Measuring Practice which are approximate only and only for illustrative purposes. For the avoidance of doubt, Dowling Jones Design shall not be liable for any reliance on these measurements. © 2015 www.dowlingjones.com 020 7630 9933

Mayfair and Marylebone  
St George Street,  
London W1S 2FQ  
+44 207 399 5550  
[mayfair@jll.com](mailto:mayfair@jll.com)

*Urban living, your way.*

[jll.co.uk/residential](http://jll.co.uk/residential)

© 2019 Jones Lang LaSalle IP, Inc. All rights reserved. All information contained herein is from sources deemed reliable; however, no representation or warranty is made to the accuracy thereof.

