



## Thayer Street, London W1U

Price £725 per week - Furnished, Unfurnished





# Description

A delightful two double bedroom apartment on Thayer Street. This property is located in Marylebone Village with very easy access to Oxford Street and Baker Street underground stations. The modern fully fitted kitchen of the apartment is directly connected to a bright and wide reception room. The property also benefits from two spacious double bedrooms, built-in storage throughout and a family bathroom.

Having your property professionally managed by The Howard de Walden Estate not only offers exceptional levels of service and high quality, professional property management. Marylebone Village is one of central London's most distinctive and characterful shopping destinations, home to a high proportion of small, independent businesses. Residents of HDWE also benefit from access to an array of discounts within Marylebone Village, resident social opportunities and local events which make Marylebone Village a unique and vibrant place to call home.

Rent is payable on a monthly basis and you may be required to pay more than a month's rent in advance, depending on your circumstances. You will be required to pay a 1 week holding deposit following a successful offer. Utility bills, council tax, telephone line and broadband are not included in the rent. As well as paying the rent, you may also be required to make some additional permitted payments. If your tenancy does not qualify as an AST, additional fees may apply. Please visit [jll.co.uk/fees](http://jll.co.uk/fees) for details of fees which may be payable when renting a property.

- Two Double bedrooms
- Open plan kitchen with reception room
- Bathroom
- Built-in storage throughout
- Professional property management
- Eligibility for local discounts in Marylebone Village
- Wifi included
- Unfurnished or furnished via separate negotiation
- Approx: 754 sq ft ( 70 sq m)
- EPC: B

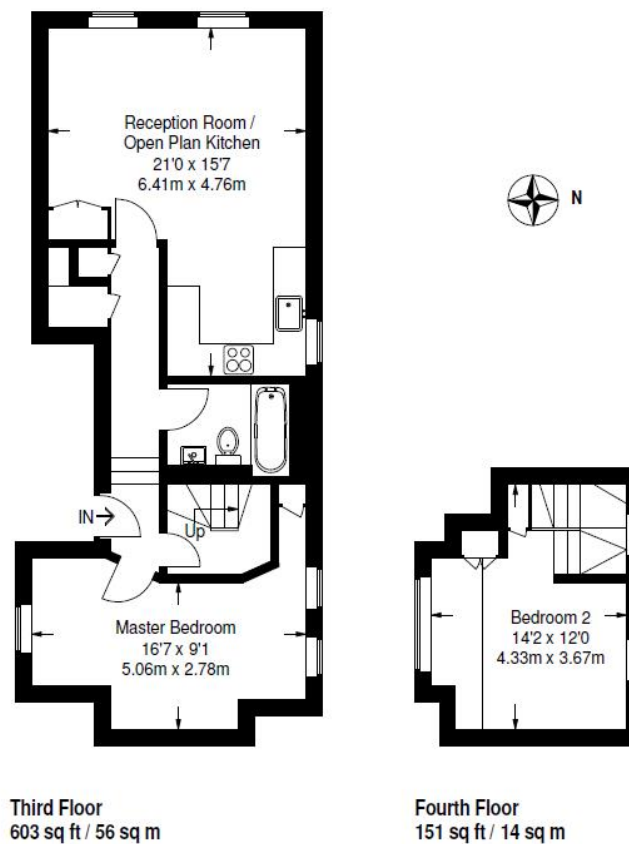


# Floorplan

754 sq ft | 70 sq m

Thayer Street

Approximate Gross Internal Area  
754 sq ft / 70 sq m



Not to scale, for guidance only and must not be relied upon as a statement of fact.  
All measurements and areas are approximate only and have been prepared in  
accordance with the current edition of the RICS Code of Measuring Practice.

Mayfair and Marylebone  
St George Street,  
London W1S 2FQ  
+44 207 399 5550  
mayfair@jll.com

*Urban living, your way.*

[jll.co.uk/residential](http://jll.co.uk/residential)

© 2019 Jones Lang LaSalle IP, Inc. All rights reserved. All information contained herein is from  
sources deemed reliable; however, no representation or warranty is made to the accuracy thereof.

