



Central St. Giles Piazza, London WC2H

Price £575 per week - Furnished





Description

A stunning 3rd Floor studio apartment in this award-winning development in Central St Giles. The property is a well-designed studio apartment featuring a space saving Murphy bed and lots of built-in storage and wardrobes, a fully fitted kitchen with dining area, a walk-in shower and a Juliet balcony overlooking the courtyard. Further benefits include wooden flooring, comfort cooling and 24-hour concierge.

Central St Giles is conveniently located for the excellent shops, restaurants and transport facilities of Covent Garden, Oxford Street, Tottenham Court Road and Holborn.

Rent is payable on a monthly basis and you may be required to pay more than a month's rent in advance, depending on your circumstances. You will be required to pay a 1 week holding deposit following a successful offer. Utility bills, council tax, telephone line and broadband are not included in the rent. As well as paying the rent, you may also be required to make some additional permitted payments. If your tenancy does not qualify as an AST, additional fees may apply. Please visit jll.co.uk/fees for details of fees which may be payable when renting a property.

- Modern Apartment
- 24hr Concierge
- Juliete Balcony
- Lots of Storage
- Comfort Cooling
- Furnished
- Floor to Ceiling Windows
- Wooden Flooring
- Council Tax Band: D
- Deposit amount: £2,875 (estimate) and an initial holding deposit of 1 week's rent is payable to res



Floorplan

317 sq ft | 30 sq m

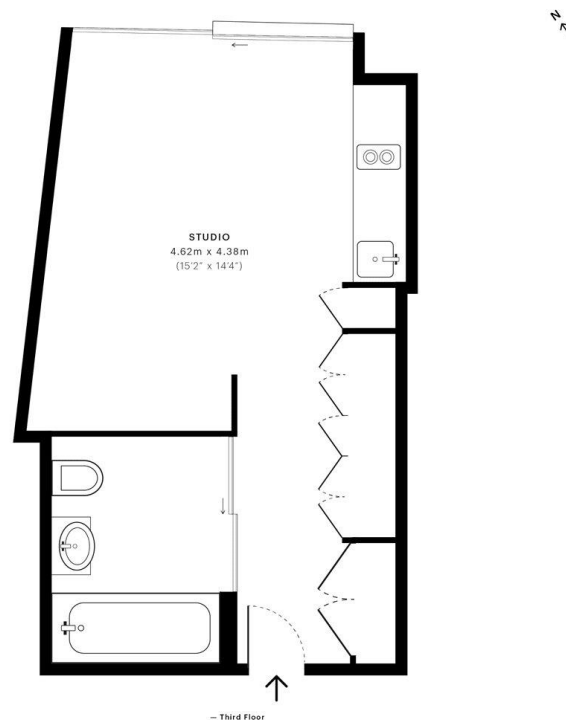


Central St. Giles Piazza, WC2H

CAPTURE DATE
19/06/2019

LASER SCAN POINTS
17,514,217

GROSS INTERNAL AREA
29.5 Sqm / 317.3 Sqft



GROSS INTERNAL AREA
The footprint of the property
29.5 Sqm / 317.3 Sqft

NET AREA (INTERNAL)
Excludes walls and external features
29.0 Sqm / 312.2 Sqft

EXTERNAL STRUCTURAL FEATURES
Balconies, terraces, verandas etc.
0.0 Sqm / 0.0 Sqft

RESTRICTED HEAD HEIGHT
Limited use area under 1.5m
0.0 Sqm / 0.0 Sqft



Spec floor plans are produced in accordance with the Royal Institution of Chartered Surveyors' Property Measurement Standards. Plots and gardens are illustrative only and are excluded from all area calculations. Due to rounding, numbers may not add up precisely.



IPMS 3B RESIDENTIAL
29.5 Sqm / 317.3 Sqft
IPMS 3C RESIDENTIAL
29.0 Sqm / 312.2 Sqft

SPEC ID:
5d0770721ce6d80a037e6557

Mayfair and Marylebone
St George Street,
London W1S 2FQ
+44 207 399 5550
mayfair@jll.com

Urban living, your way.

jll.co.uk/residential

© 2019 Jones Lang LaSalle IP, Inc. All rights reserved. All information contained herein is from sources deemed reliable; however, no representation or warranty is made to the accuracy thereof.

