



## Brill Place, London NW1

Price £795 per week - Furnished







# Description

The apartment is finished to a high standard and comprises an open plan living space, with a stylish and fully integrated kitchen, living area with floor to ceiling windows, a spacious bedroom with fitted wardrobes and a family bathroom suite with bath and overhead rainfall shower. Each apartment has a private balcony, and the apartment is offered furnished.

Grand Central Apartments, a residential tower just a short walk to Kings Cross with secure entry, concierge service, lift access and bicycle storage.

Rent is payable on a monthly basis, and you may be required to pay more than a month's rent in advance, depending on your circumstances. You will be required to pay a 1 week holding deposit following a successful offer. Utility bills, council tax, telephone line and broadband are not included in the rent. As well as paying the rent, you may also be required to make some additional permitted payments. If your tenancy does not qualify as an AST, additional fees may apply. Please visit [jll.co.uk/fees](http://jll.co.uk/fees) for details of fees which may be payable when renting a property.

- Modern Apartment
- 6th Floor
- Private Balcony
- Concierge Service
- Open-Plan Living
- Wooden Flooring
- Furnished
- Floor to Ceiling Windows
- Council tax: Band F
- Deposit amount: £3,975.00 (estimate) and an initial holding deposit of 1 week's rent is payable to

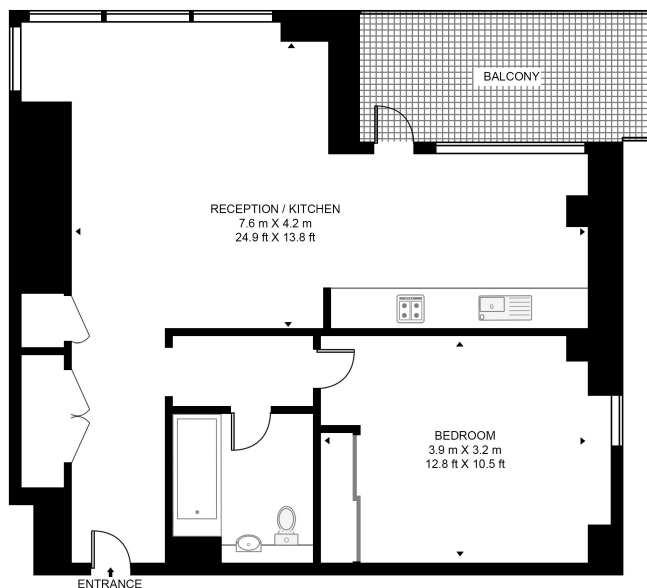


# Floorplan

675 sq ft | 63 sq m

## GRAND CENTRAL APARTMENTS

APPROXIMATE GROSS INTERNAL FLOOR AREA 594 SQ.FT (55.2 SQ.M)



SIXTH FLOOR



This floor plan has been defined by the RICS Code of Measurement. This floor plan and all others are for approximate representative purposes only and upon usage is agreed to as such by the client.  
WWW: [hdvirtualart.com](http://hdvirtualart.com) | TEL: 0203.974.1567 | EMAIL: [info@hdvirtualart.com](mailto:info@hdvirtualart.com)

Mayfair and Marylebone  
St George Street,  
London W1S 2FQ  
+44 207 399 5550  
[mayfair@jll.com](mailto:mayfair@jll.com)

*Urban living, your way.*

[jll.co.uk/residential](http://jll.co.uk/residential)

© 2019 Jones Lang LaSalle IP, Inc. All rights reserved. All information contained herein is from sources deemed reliable; however, no representation or warranty is made to the accuracy thereof.

