



# Great Portland Street, London W1W

Price £1,100 per week - Furnished







## Description

A beautifully appointed apartment in a desirable development close to Regent's Street. This modern apartment is fitted with a contemporary open-plan kitchen, a principal bedroom with built-in wardrobes and en-suite shower room, a second double bedroom with built-in wardrobes, and a third bedroom/study and a modern bathroom suite. The apartment also features contemporary furniture throughout, wooden flooring, and ample storage.

Great Portland Street is conveniently located with a variety of transport links such as Oxford Circus, Goodge Street Station, and Great Portland Street. This fabulous location also offers amazing choice of restaurants, bars as well as shopping facilities all within a short stroll.

Rent is payable on a monthly basis and you may be required to pay more than a month's rent in advance, depending on your circumstances. You will be required to pay a 1 week holding deposit following a successful offer. Utility bills, council tax, telephone line and broadband are not included in the rent. As well as paying the rent, you may also be required to make some additional permitted payments. If your tenancy does not qualify as an AST, additional fees may apply. Please visit [jll.co.uk/fees](http://jll.co.uk/fees) for details of fees which may be payable when ren

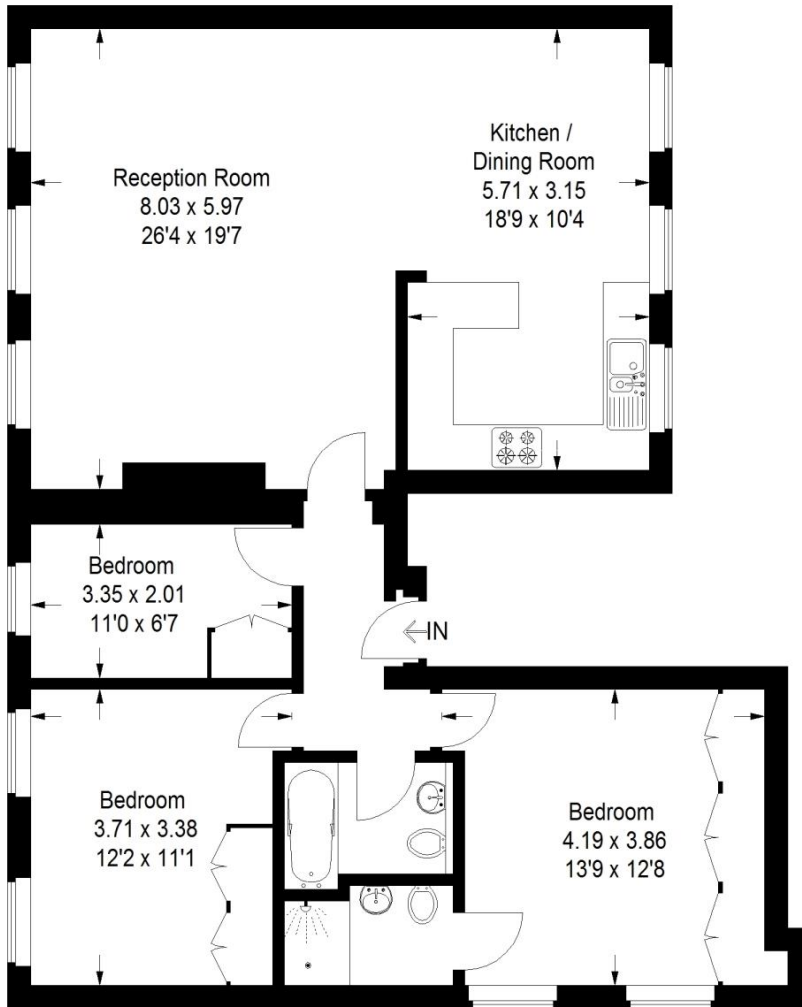
- Available now
- Two Double Bedrooms
- Single Room/Study
- Open-Plan Kitchen
- Wooden Flooring
- Furnished
- Period Features
- Approx. 97sqm / 1042sq ft
- Council Tax Band G
- Deposit amount: £6,600.00 (estimate) and an initial holding deposit of 1 week's rent is payable to

# Floorplan

1,042 sq ft | 97 sq m

## Great Portland Street, W1

Approximate Gross Internal Area  
96.8 sq m / 1042 sq ft



### Second Floor

This plan is for layout guidance only. Not drawn to scale unless stated. Windows and door openings are approximate. Whilst every care is taken in the preparation of this plan, please check all dimensions, shapes and compass bearings before making any decisions reliant upon them. (ID211916)