



Marylebone High Street, London W1U

Price £1,015 per week - Furnished,
Unfurnished







Description

A wonderful first floor flat in an attractive converted building in Marylebone. The apartment comprises two double bedrooms, one en suite shower room, a family bathroom and a reception room with open plan kitchen. Marylebone Street is conveniently situated close to Marylebone village and the transport links of Baker Street.

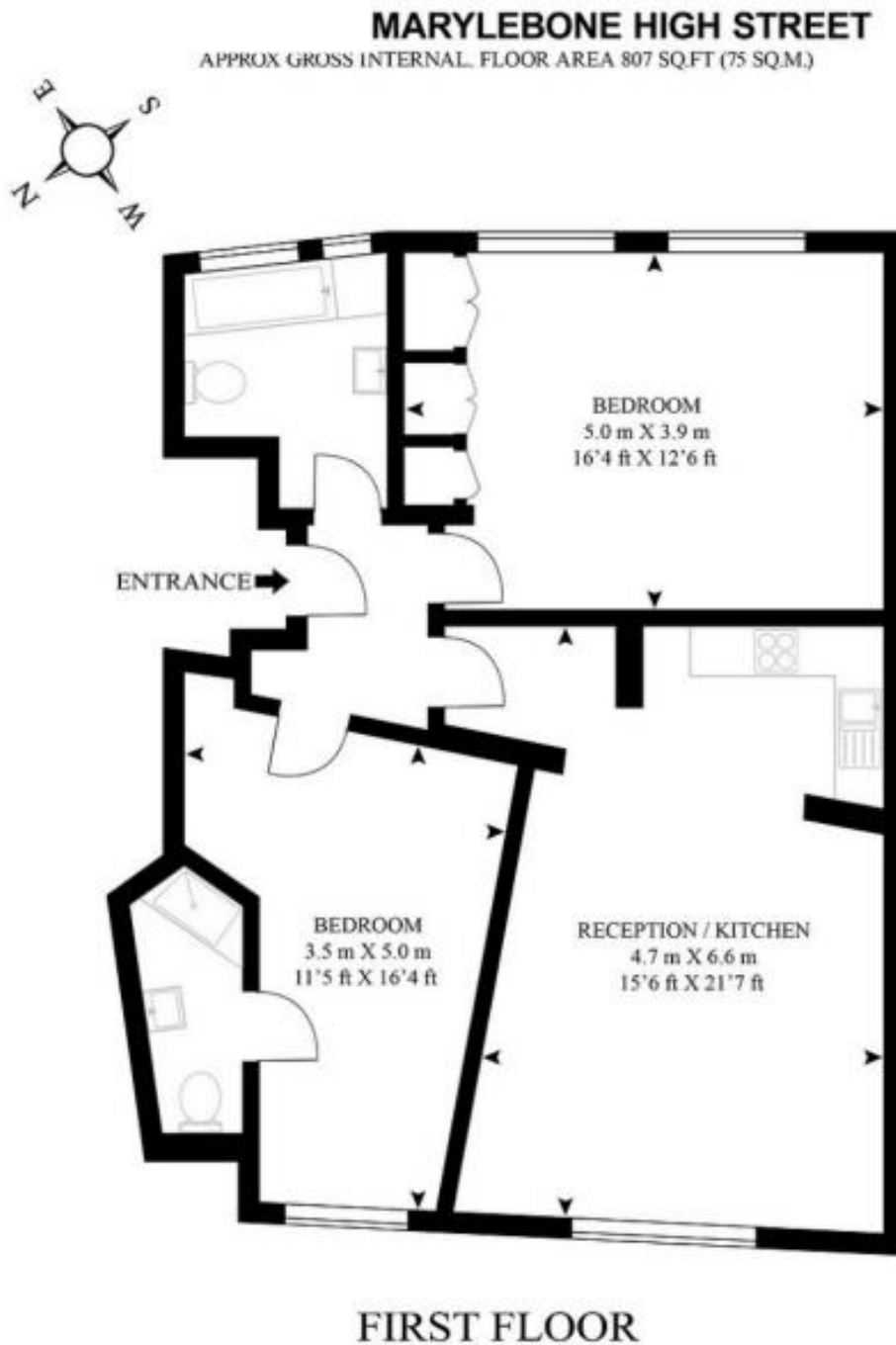
Having your property professionally managed by The Howard de Walden Estate not only offers exceptional levels of service and high quality, professional property management. Marylebone Village is one of central London's most distinctive and characterful shopping destinations, home to a high proportion of small, independent businesses. Residents of HDWE also benefit from access to an array of discounts within Marylebone Village, resident social opportunities and local events which make Marylebone Village a unique and vibrant place to call home.

Rent is payable on a monthly basis and you may be required to pay more than a month's rent in advance, depending on your circumstances. You will be required to pay a 1 week holding deposit following a successful offer. Utility bills, council tax, telephone line and broadband are not included in the rent. As well as paying the rent, you may also be required to make som

- Two double bedrooms
- En suite shower room
- Family bathroom
- Reception room
- Open plan kitchen
- First floor
- Unfurnished/furnished by separate negotiation
- Professional property management
- Eligibility for local discounts in Marylebone Village
- Wifi included

Floorplan

807 sq ft | 75 sq m



As Defined by RICS - Code of Measuring Practice
The Floor - plans are for representation purposes only and
should be used as such by any prospective client.

 Panomatics.com

Mayfair and Marylebone
13a St George Street,
London W1S 2FQ
+44 207 399 5550
mayfair@jll.com

Urban living, your way.

jll.co.uk/residential

© 2019 Jones Lang LaSalle IP, Inc. All rights reserved. All information contained herein is from sources deemed reliable; however, no representation or warranty is made to the accuracy thereof.

