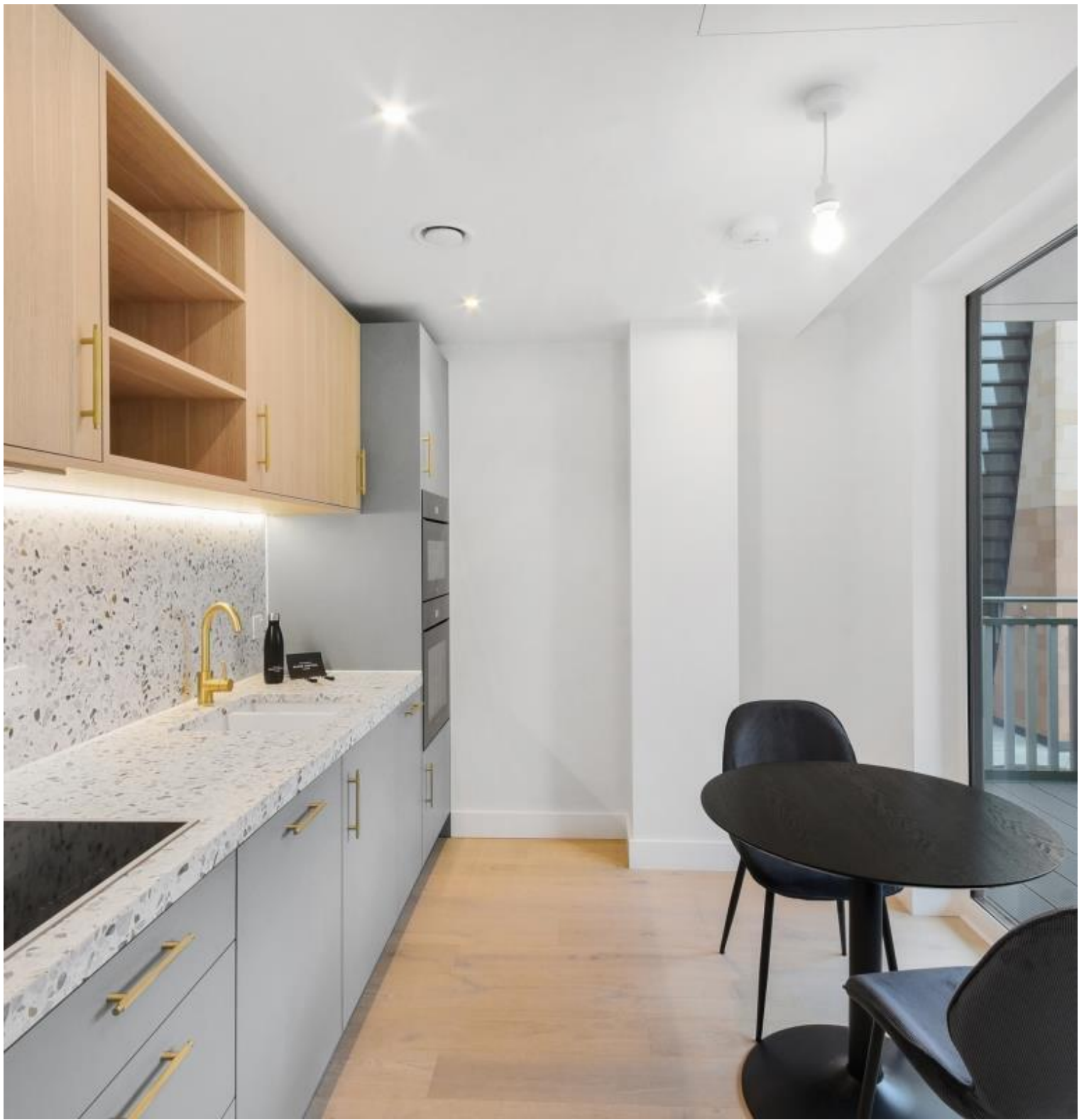




## Brill Place, London NW1

Price £795 per week - Furnished, Part  
Furnished, Unfurnished









## Description

The apartment is finished to a high standard and comprises an open plan living space, with a stylish and fully integrated kitchen, living area with floor to ceiling windows, spacious bedroom with fitted wardrobes and contemporary bathroom suite with bath and overhead rainfall shower. Each apartment has a private balcony. The apartment is offered furnished.

Grand Central Apartments, a new residential tower just a short walk to Kings Cross with secure entry, concierge service, lift access and bicycle storage.

As well as paying the rent, you may also be required to make some additional permitted payments. If your tenancy does not qualify as an AST, additional fees may apply. Please visit [jll.co.uk/fees](http://jll.co.uk/fees) for details of fees which may be payable when renting a property.

Rent is payable on a monthly basis and you may be required to pay more than a month's rent in advance, depending on your circumstances. You will be required to pay a 1 week holding deposit following a successful offer. Utility bills, council tax, telephone line and broadband are not included in the rent. As well as paying the rent, you may also be required to make some additional permitted payments. If your tenancy does not q

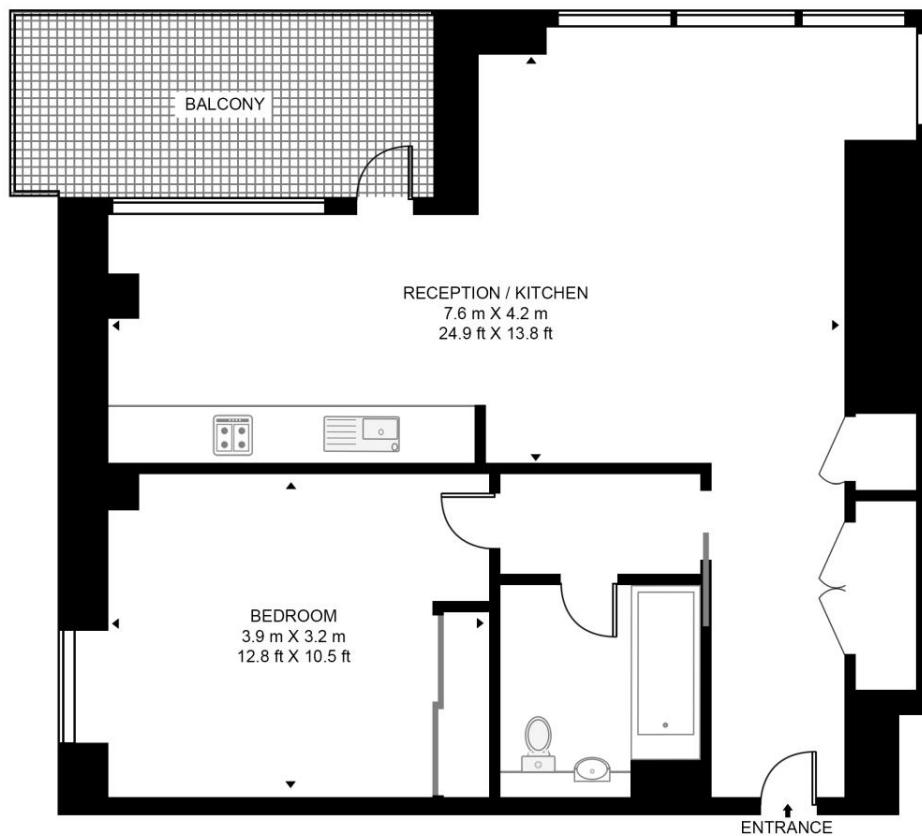
- Modern Apartment
- Concierge Service
- Private Balcony
- Floor to Ceiling Windows
- Open-Plan Living
- Wooden Flooring
- Furnished or Unfurnished
- Close to Kings Cross / St. Pancras Stations-
- Council tax: Band E
- Deposit amount: £3,975

# Floorplan

594 sq ft | 55 sq m

## GRAND CENTRAL APARTMENTS

APPROXIMATE GROSS INTERNAL FLOOR AREA 594 SQ.FT (55.2 SQ.M)



FIRST FLOOR



This floor plan has been defined by the RICS Code of Measurement. This floor plan and all others are for approximate representative purposes only and upon usage is agreed to as such by the client.  
WWW: [hdvirtualart.com](http://hdvirtualart.com) | TEL: 0203.974.1567 | EMAIL: [info@hdvirtualart.com](mailto:info@hdvirtualart.com)

Mayfair and Marylebone  
13a St George Street,  
London W1S 2FQ  
+44 207 399 5550  
[mayfair@jll.com](mailto:mayfair@jll.com)

*Urban living, your way.*

[jll.co.uk/residential](http://jll.co.uk/residential)

© 2019 Jones Lang LaSalle IP, Inc. All rights reserved. All information contained herein is from sources deemed reliable; however, no representation or warranty is made to the accuracy thereof.

