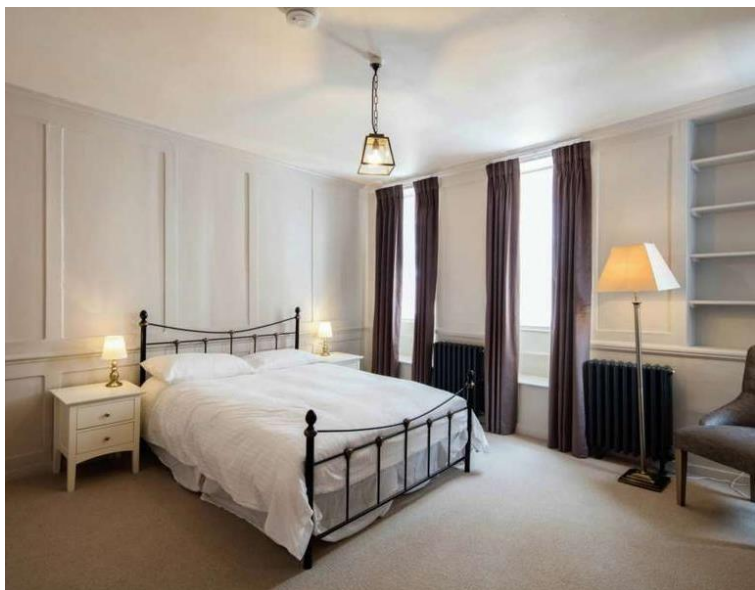


Meard Street, London W1F

Price £2,300 per week - Furnished, Part
Furnished, Unfurnished







Description

A beautiful newly refurbished three double bedroom Grade II listed five story townhouse with an interesting heritage located on this quiet (no cars) cobbled street just off Wardour Street.

The house comprises 2 reception rooms, a dining room, separate kitchen with a pantry, 3 double bedrooms, 4 bathrooms, and a private patio garden. Set over five floors this house has retained all the original features. Main dining room and family sized kitchen is on the ground floor, with the added benefit of a lovely private terrace. The lower ground floor has a fully equipped utility room and a second lounge. The floors above all boast generous sized bedrooms and ensuite bathrooms. This incredible house is set within the hub of Soho with shops, bars, and restaurants all close by.

Rent is payable on a monthly basis and you may be required to pay more than a month's rent in advance, depending on your circumstances. You will be required to pay a 1 week holding deposit following a successful offer. Utility bills, council tax, telephone line and broadband are not included in the rent. As well as paying the rent, you may also be required to make some additional permitted payments. If your tenancy does not qualify as an AST, additional fees may apply. Please visit jll.co.uk/fees for details of fees which may be payable when ren

- Town House
- Grade II Listed
- Approx. 230sqm / 2,478sqft
- Period Features
- 2 Reception Rooms
- Utility Room
- Wooden Flooring
- Professionally Managed
- Council Tax: Band H
- Deposit amount: £13,800

Floorplan

2,478 sq ft | 230 sq m

Meard Street, W1F



This plan is for layout guidance only. Not drawn to scale unless stated. Windows and door openings are approximate. Whilst every care is taken in the preparation of this plan, please check all dimensions, shapes and compass bearings before making any decisions reliant upon them. (ID 259459)

Mayfair and Marylebone
 13a St George Street,
 London W1S 2FQ
 +44 207 399 5550
 mayfair@jll.com

Urban living, your way.

jll.co.uk/residential

© 2019 Jones Lang LaSalle IP, Inc. All rights reserved. All information contained herein is from sources deemed reliable; however, no representation or warranty is made to the accuracy thereof.

