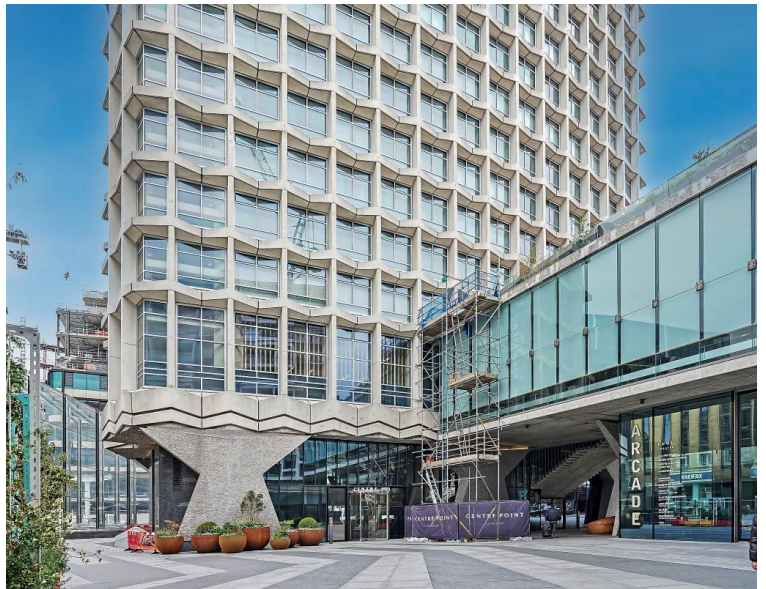


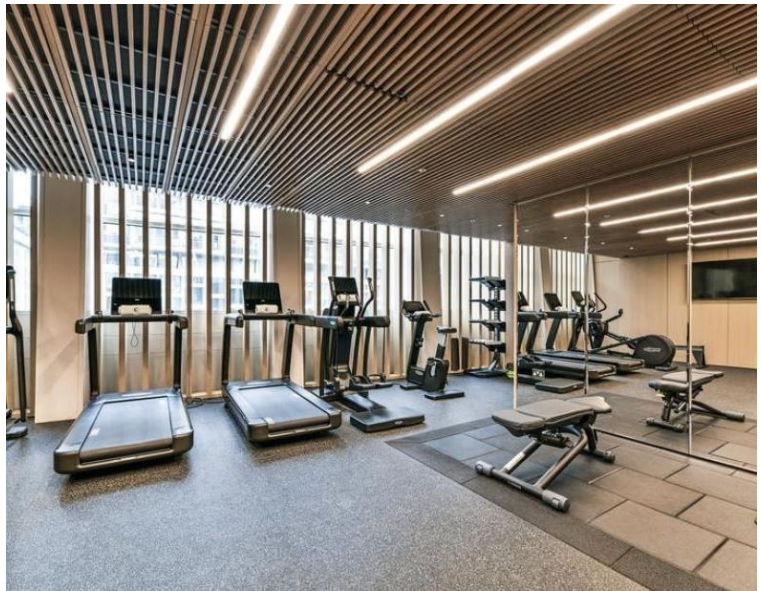
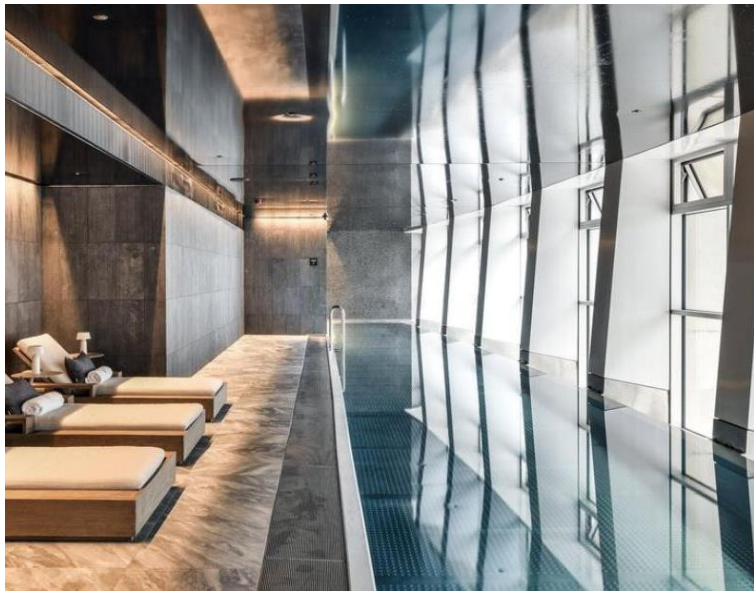


New Oxford Street, London WC1A

Price £1,200 per week - Furnished







Description

A stunning one bedroom apartment, located in this fantastic development in St Giles Street. The apartment comprises one double bedroom with en suite bathroom, guest cloakroom and reception room with open plan dining room and kitchen with high specification appliances.

Centre Point is located with easy access to the City, within walking distance of Tottenham Court Road underground station, Covent Garden and the West End.

Rent is payable on a monthly basis and you may be required to pay more than a month's rent in advance, depending on your circumstances. You will be required to pay a 1 week holding deposit following a successful offer. Utility bills, council tax, telephone line and broadband are not included in the rent. As well as paying the rent, you may also be required to make some additional permitted payments. If your tenancy does not qualify as an AST, additional fees may apply. Please visit jll.co.uk/fees for details of fees which may be payable when renting a property.

- Luxury Development
- Measuring Approx. 1267sq ft / 118sq m
- 24hr Concierge Service
- Gym
- Swimming Pool
- Cinema
- Furnished
- Wooden Flooring
- EPC: B
- Council tax: Band E

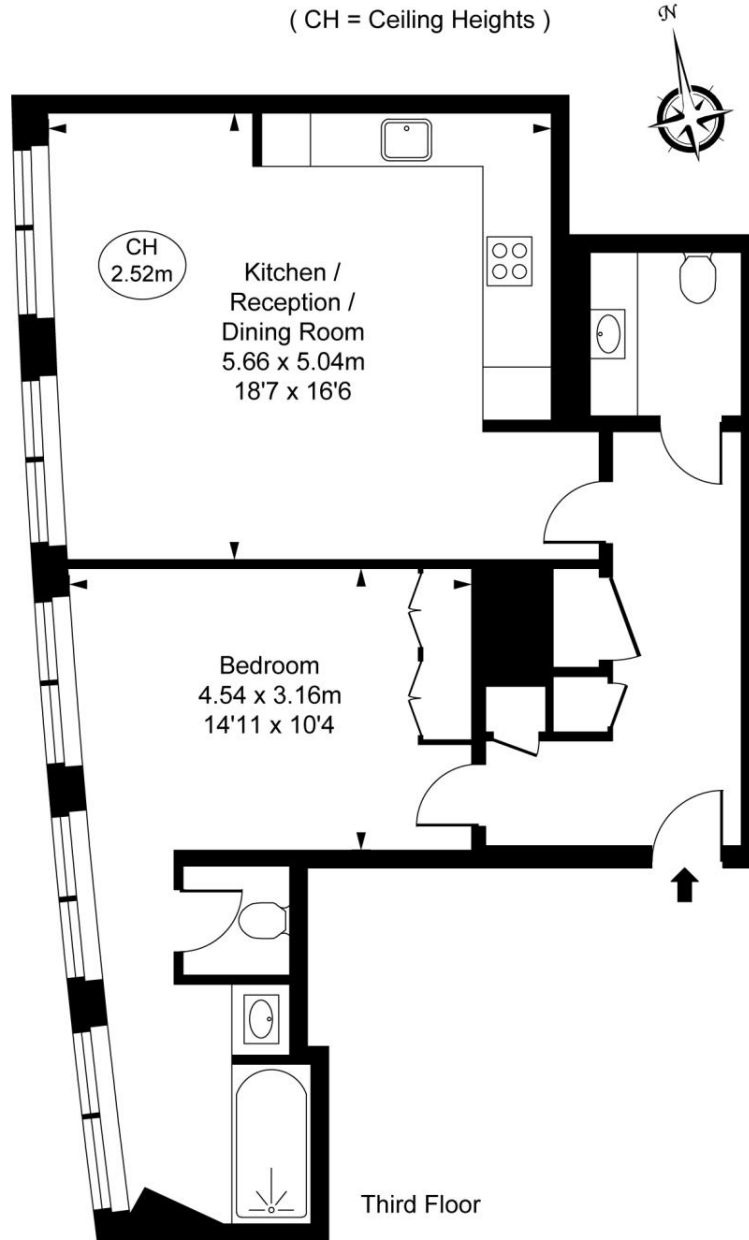
Floorplan

737 sq ft | 69 sq m

Centre Point, New Oxford Street, WC1A

Approximate Gross Internal Area
68.48 sq m / 737 sq ft

(CH = Ceiling Heights)



This plan is not to scale. It is for guidance and not for valuation purposes.
All measurements and areas are approximate only, and have been prepared in accordance with the current edition of the RICS Code of Measuring Practice.
© Fulham Performance

Mayfair and Marylebone
13a St George Street,
London W1S 2FQ
+44 207 399 5550
mayfair@jll.com

Urban living, your way.

jll.co.uk/residential

© 2019 Jones Lang LaSalle IP, Inc. All rights reserved. All information contained herein is from sources deemed reliable; however, no representation or warranty is made to the accuracy thereof.

