

## Bourdon Street, London W1K

Price £2,150 per week - Furnished







## Description

A large apartment situated in a portered building on a quiet street close to Berkeley Square in the heart of Mayfair.

Measuring over 119sqm / 1,285sq ft, the apartment has a spacious reception room with large windows allowing in plenty of natural light, a separate modern kitchen, a principle bedroom with en-suite bathroom and walk-in wardrobe, a second double bedroom and a family bathroom. The apartment is offered furnished, and the development has a communal roof terrace.

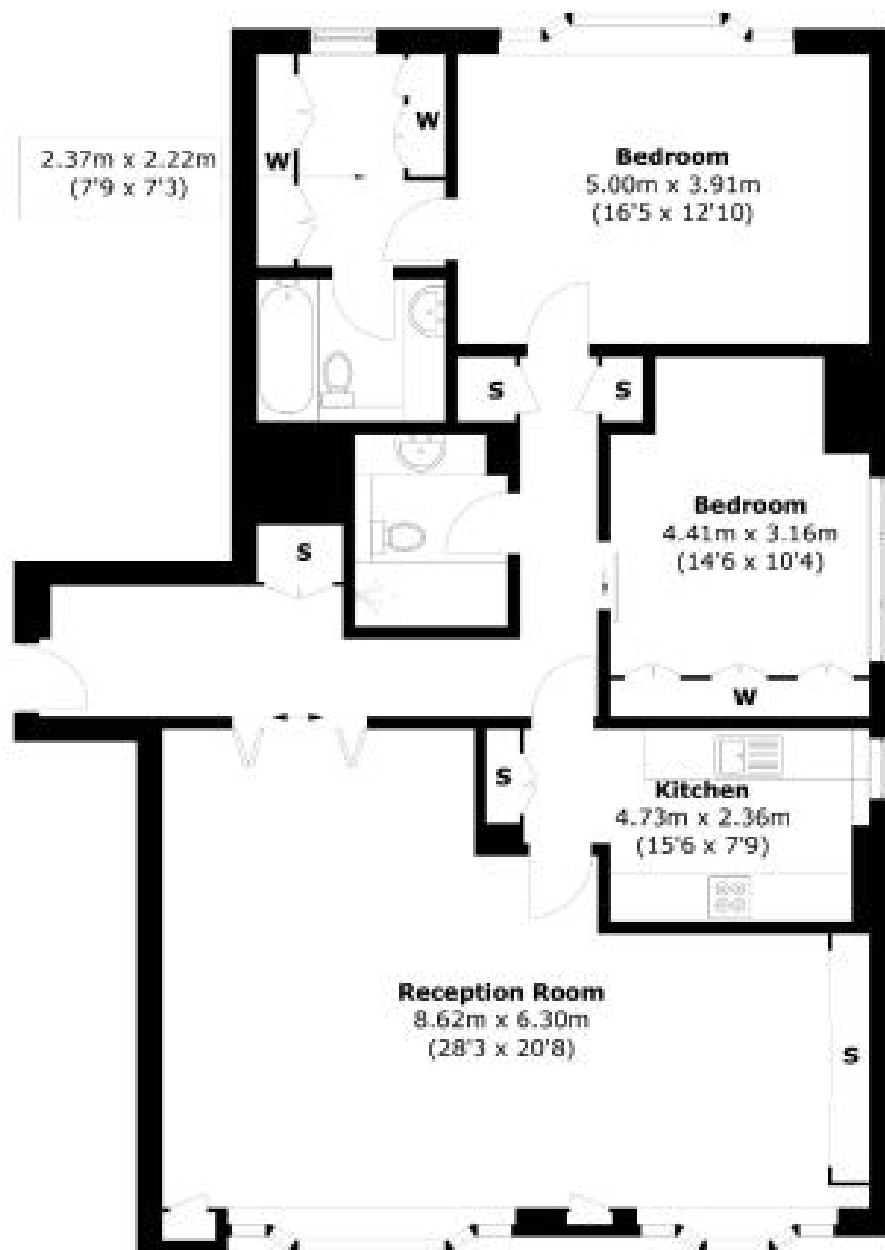
Located off Berkeley Square in the heart of Mayfair, Grosvenor Hill Court is very close to Regent Street, Bond Street and Green Park Stations.

Rent is payable on a monthly basis and you may be required to pay more than a month's rent in advance, depending on your circumstances. You will be required to pay a 1 week holding deposit following a successful offer. Utility bills, council tax, telephone line and broadband are not included in the rent. As well as paying the rent, you may also be required to make some additional permitted payments. If your tenancy does not qualify as an AST, additional fees may apply. Please visit [jll.co.uk/fees](http://jll.co.uk/fees) for details of fees which may be payable when renting a property.

- Spacious Apartment
  - Measuring over 119sqm / 1,285sq ft
  - Separate Kitchen
  - Two Double Bedrooms
  - Porter
  - Furnished
  - Communal Roof Terrace
  - Central Mayfair
  - EPC: D
  - Council tax: Band H
-

# Floorplan

1,285 sq ft | 119 sq m



## Fourth Floor

Total area (approx.): 119.4 sq. m (1,285.2 sq. ft)

Mayfair and Marylebone  
13a St George Street,  
London W1S 2FQ  
+44 207 399 5550  
mayfair@jll.com

*Urban living, your way.*

[jll.co.uk/residential](http://jll.co.uk/residential)

© 2019 Jones Lang LaSalle IP, Inc. All rights reserved. All information contained herein is from sources deemed reliable; however, no representation or warranty is made to the accuracy thereof.

