



The Hat Factory, London W1F

Price £1,500 per week - Furnished







Description

A spectacular second floor apartment in this unique development, The Hat Factory, moments from the many amenities of Oxford Circus and Tottenham Court Road.

The property consists of a large reception room with dining area and a fully fitted open plan kitchen, private terrace, master bedroom with fitted wardrobes and en-suite shower room, second double bedroom with fitted wardrobes, luxury bathroom. Further benefits include an impressive double height vaulted ceiling, comfort cooling, underfloor heating and private entrance.

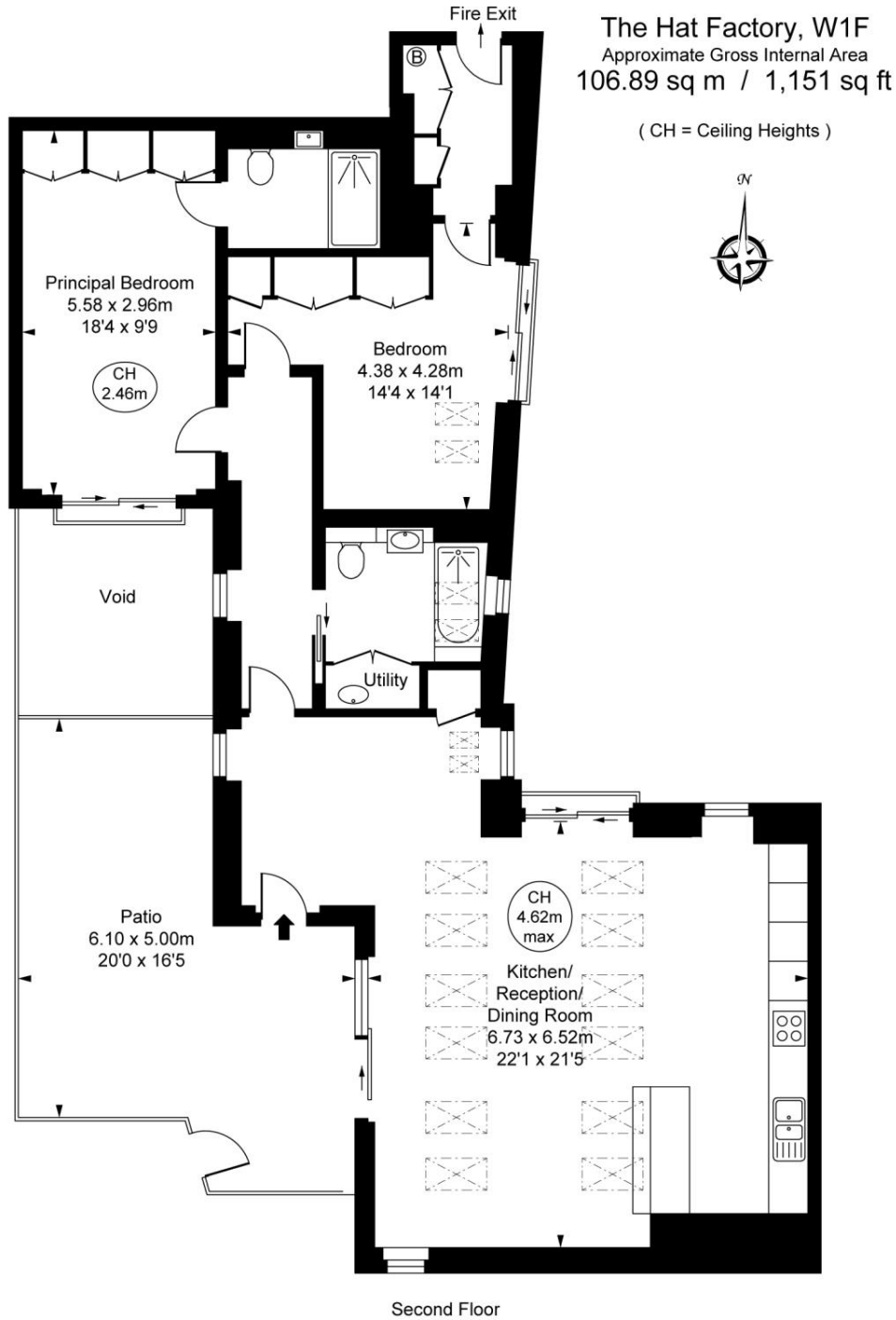
The Hat Factory apartments are the result of the reshaping of two Victorian factory buildings of historical significance, fusing the heritage of the past in eight stylish loft style apartments right in the heart of the vibrant West End.

Rent is payable on a monthly basis and you may be required to pay more than a month's rent in advance, depending on your circumstances. You will be required to pay a 1 week holding deposit following a successful offer. Utility bills, council tax, telephone line and broadband are not included in the rent. As well as paying the rent, you may also be required to make some additional permitted payments. If your tenancy does not q

- Converted Factory
- Loft Style Apartment
- Soho
- Private Terrace
- Vaulted Ceiling
- Open-Plan Kitchen
- Two Double Bedrooms
- Deposit: £9,000.00
- Council Tax: Band H

Floorplan

1,149 sq ft | 107 sq m



This plan is not to scale. It is for guidance and not for valuation purposes.
All measurements and areas are approximate only, and have been prepared in accordance with the current edition of the RICS Code of Measuring Practice.
© Fulham Performance

Mayfair and Marylebone
13a St George Street,
London W1S 2FQ
+44 207 399 5550
mayfair@jll.com

Urban living, your way.

jll.co.uk/residential

© 2019 Jones Lang LaSalle IP, Inc. All rights reserved. All information contained herein is from sources deemed reliable; however, no representation or warranty is made to the accuracy thereof.

