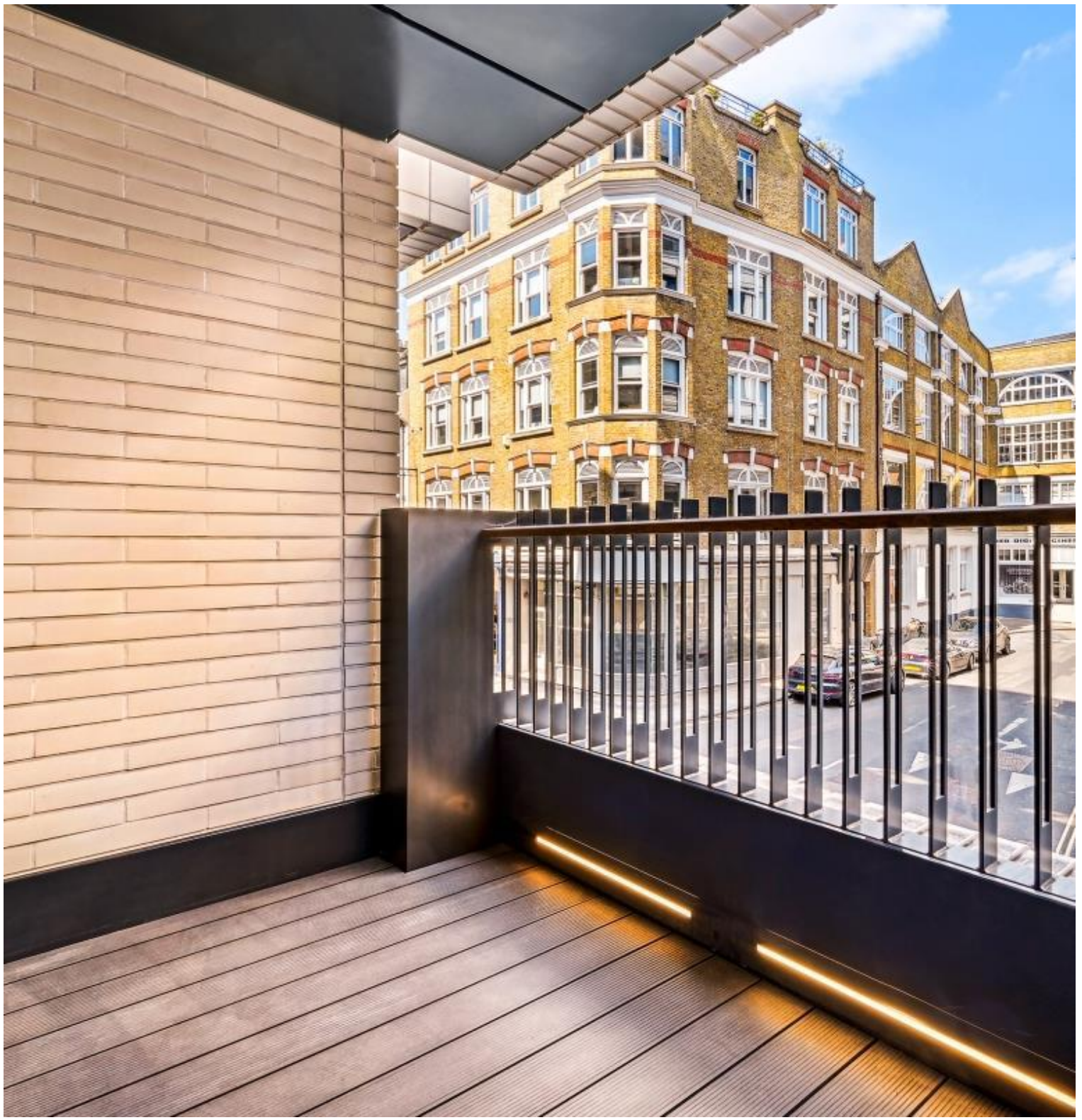


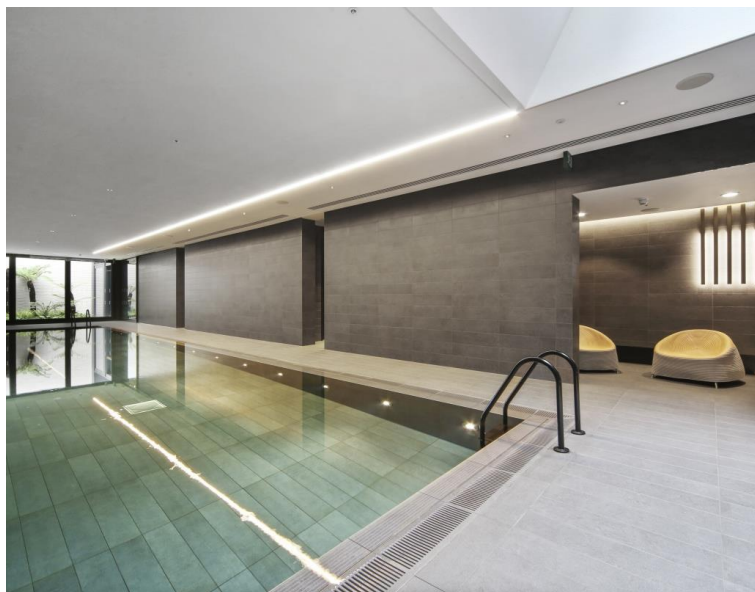


## Rathbone Place, London W1T

Price £1,100 per week - Furnished, Part  
Furnished







## Description

The apartment is set on the 1st floor and offers spacious open plan living a fully fitted kitchen with dining area which leads through to the reception area with access to the private balcony which is also accessible from the bedroom. The bedroom suite has built-in storage and a large en-suite with a double sink and walk-in shower. The apartment is furnished and has wooden flooring throughout with carpet in the bedroom for extra comfort.

Residents have access to a 24-hour concierge, gym, swimming pool, sauna and steam room, beautiful gardens, residents' lounge, wine storage and tasting room, screening room, Moments from Oxford Street and located in the heart of London's West End, Rathbone Square is ideal for transport links in and around London with The City and West London being just 10 minutes away via the underground.

We understand that cooling / heating is delivered via a communal system for which separate charges apply.

Rent is payable on a monthly basis and you may be required to pay more than a month's rent in advance, depending on your circumstances. You will be required to pay a 1 week holding deposit following a successful offer. Utility bills, council tax, tele

- Modern Apartment
- 24 Hour Concierge
- Open Plan Kitchen
- Balcony
- Residents Gym
- Swimming Pool
- Sauna & steam Room
- Approx. 581 sq ft (53 sq m)
- EPC: B
- Council Tax: Band E

# Floorplan

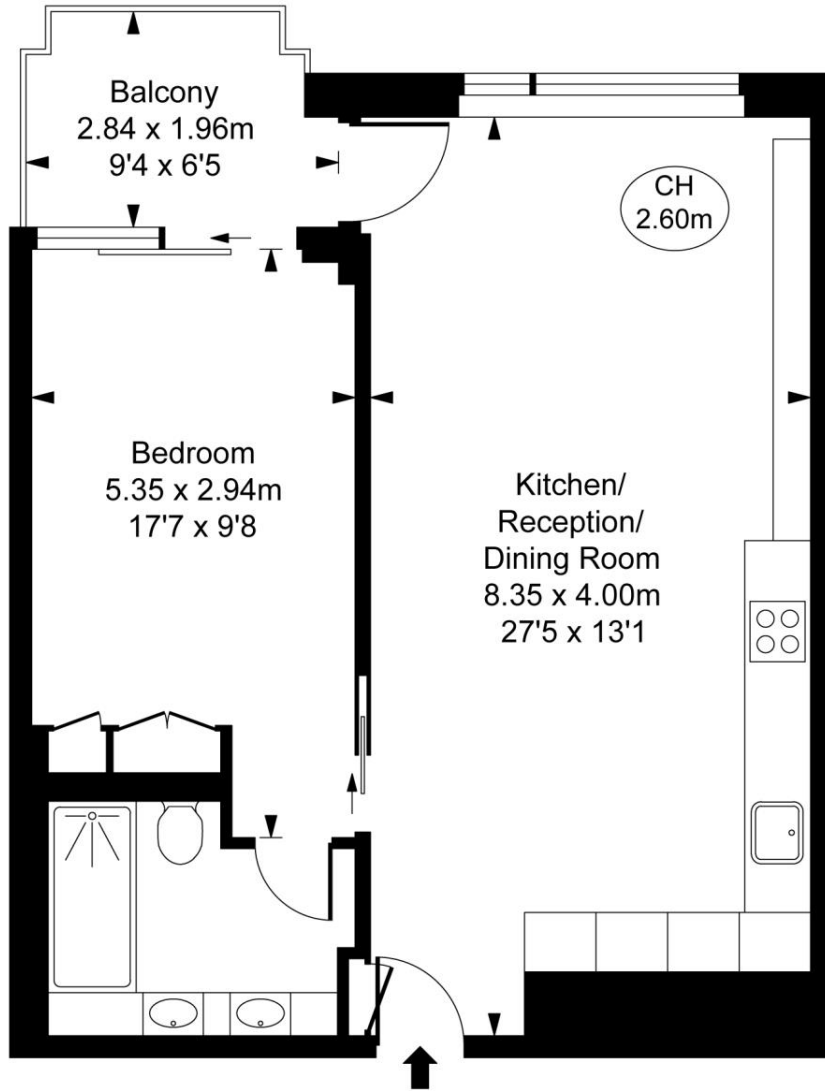
571 sq ft | 53 sq m

## Rathbone Place, W1T

Approximate Gross Internal Area

54.02 sq m / 581 sq ft

( CH = Ceiling Heights )



First Floor

This plan is not to scale. It is for guidance and not for valuation purposes.  
All measurements and areas are approximate only, and have been prepared in accordance with the current edition of the RICS Code of Measuring Practice.  
© Fulham Performance

Mayfair and Marylebone  
13a St George Street,  
London W1S 2FQ  
+44 207 399 5550  
mayfair@jll.com

*Urban living, your way.*

[jll.co.uk/residential](http://jll.co.uk/residential)

© 2019 Jones Lang LaSalle IP, Inc. All rights reserved. All information contained herein is from sources deemed reliable; however, no representation or warranty is made to the accuracy thereof.

