



**Millbank, London SW1P**  
Price £1,650 per week - Furnished







## Description

This luxury 2 bedroom, 2 bathroom apartment set over approx 946 sq ft in the prestigious Milbank Quarter.

Milbank Quarter is the first phase of the highly anticipated 9 Millbank, developed by Berkley Homes. Milbank blends the deep history of the 1920s Grade II 'Imperial Chemical House' with a newly designed purpose built quarter offering exclusive, contemporary living for its residents. The development provides residents with the highest quality leisure facilities, including a 24-hour concierge, a state-of-the-art gym, luxurious swimming pool with spa and treatment room, private cinema screening room, meeting rooms.

This two bedroom apartment has been crafted to the highest of specifications with a beautiful full length balcony, spacious open plan reception featuring a luxury Kitchen with integrated appliances, principal bedroom with dressing area and en suite bathroom, second double bedroom with fitted wardrobes, luxury rainfall shower room. The apartment further benefits from a utility room, engineered timber flooring, comfort cooling and underfloor heating throughout.

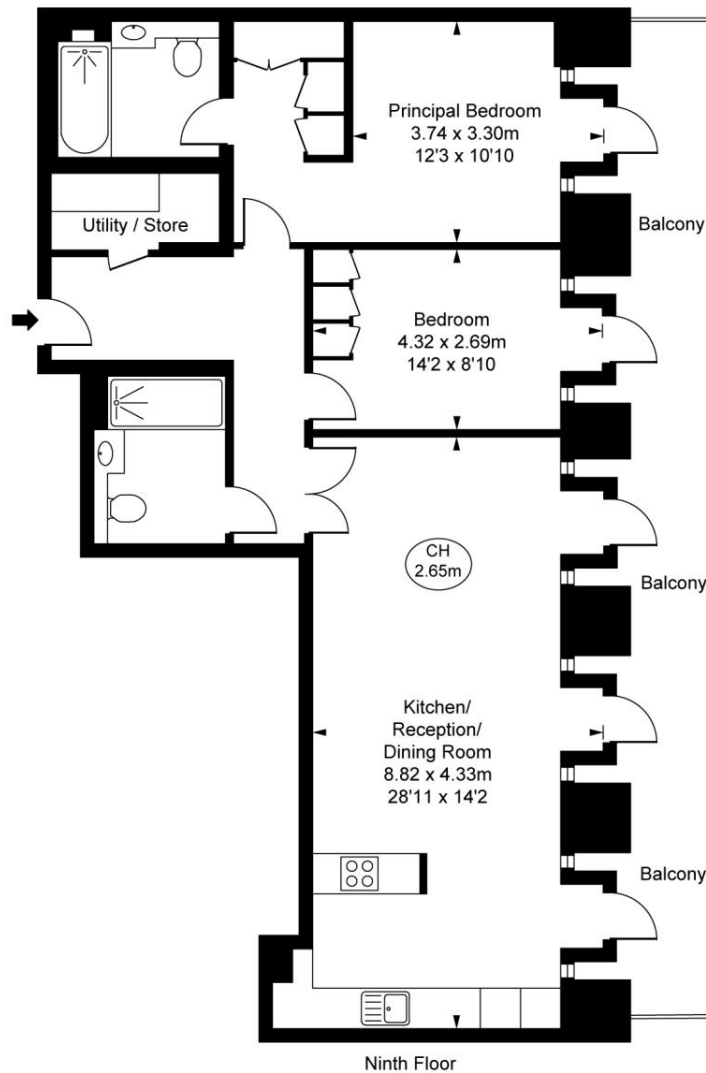
Living in Westminster also puts you within walking distance of three Royal Parks, upscale shopping at Knightsbridge, Mayfair'

- Two double bedrooms
- Two bathrooms
- Private full length balcony
- Lift
- Residents gym
- Swimming pool and spa
- 24 Hour Concierge
- Cinema screening room
- Approx 946 sq ft
- EPC: B

# Floorplan

946 sq ft | 88 sq m

Millbank, SW1P  
Approximate Gross Internal Area  
87.91 sq m / 946 sq ft  
( CH = Ceiling Heights )



This plan is not to scale. It is for guidance and not for valuation purposes.  
All measurements and areas are approximate only, and have been prepared in accordance with the current edition of the RICS Code of Measuring Practice.  
© Fulham Performance

Mayfair and Marylebone  
13a St George Street,  
London W1S 2FQ  
+44 207 399 5550  
mayfair@jll.com

*Urban living, your way.*

[jll.co.uk/residential](http://jll.co.uk/residential)

© 2019 Jones Lang LaSalle IP, Inc. All rights reserved. All information contained herein is from sources deemed reliable; however, no representation or warranty is made to the accuracy thereof.

