



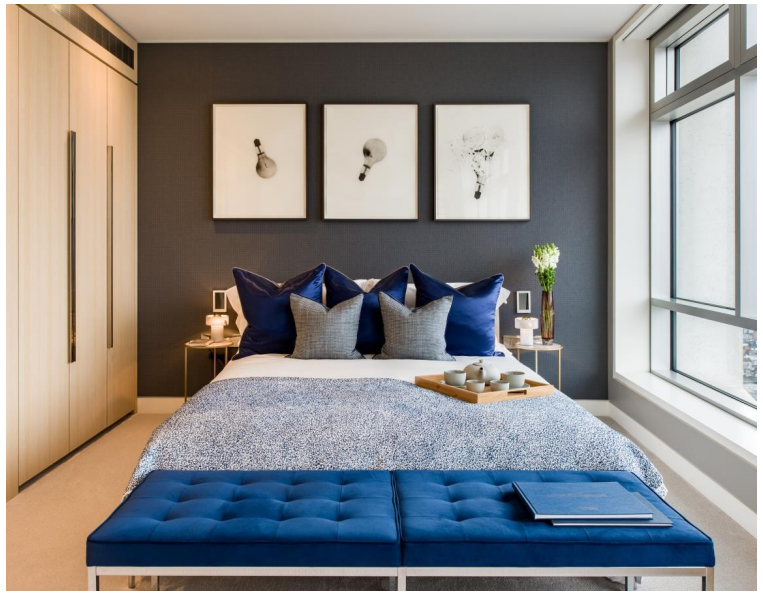
## New Oxford Street, London WC1A

Guide price £8,200,000 Leasehold









## Description

Centre Point stands as a landmark at the heart of the West End, visible for miles around and marking the geographic, creative and cultural centre of London. The theatres of West End, the shops of Mayfair, and the restaurants of Soho and Fitzrovia all lie within a short stroll.

The tower has opened out to a new public square, lined with high-end retailers and restaurants, whilst the new Crossrail connection at Tottenham Court Road will enable travel to Heathrow in under 30 minutes.

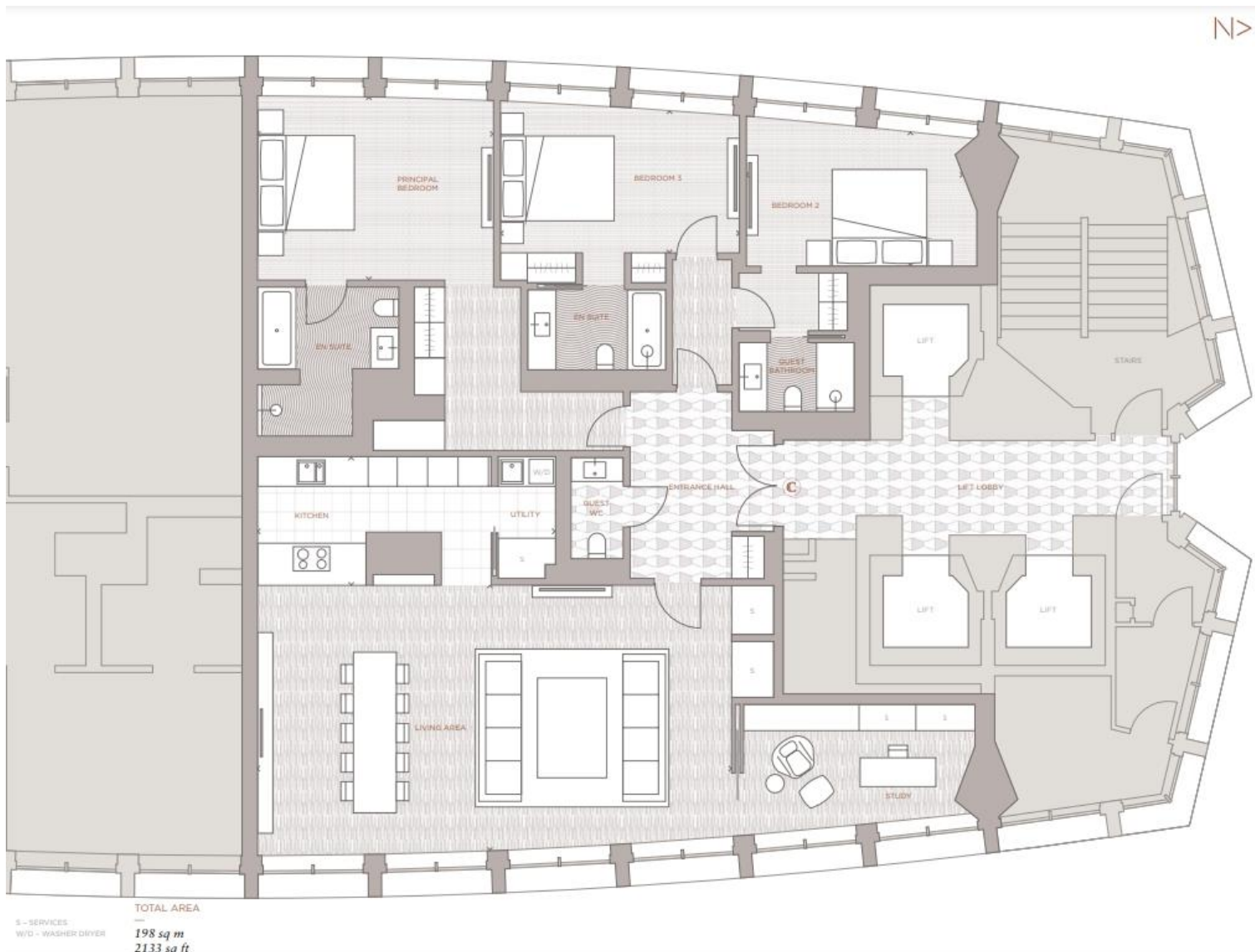
Centre Point Residences benefits from being situated at the intersection of the four most iconic neighbourhoods, Bloomsbury, Fitzrovia, Covent Garden and Soho and is the first of many regeneration projects to be completed around Tottenham Court Road.

- 24 hour concierge and security
- Spa
- 30 metre swimming pool
- Gym
- Treatment rooms
- His and hers changing facilities
- Private cinema room
- Residents' Club Lounge with bar service
- Private parking option



# Floorplan

2,133 sq ft | 198 sq m



Mayfair and Marylebone  
13a St George Street,  
London W1S 2FQ  
+44 207 399 5550

*Urban living, your way.*

[jll.co.uk/residential](http://jll.co.uk/residential)

© 2019 Jones Lang LaSalle IP, Inc. All rights reserved. All information contained herein is from sources deemed reliable; however, no representation or warranty is made to the accuracy thereof.

