

No.6

BUCKINGHAM GATE
ST JAMES'S PARK, LONDON SW1







THE BUCKINGHAM

No.6 Buckingham Gate is a classic white stucco-fronted 19th-century Grade II listed trophy house.

Situated directly opposite Buckingham Palace and comprising c.15,845 square feet (1,472 square metres), the townhouse is arranged over seven floors, offering five reception rooms and six principal bedrooms as well as staff accommodation.

It is the grand proportions and impressive volume that make this magnificent townhouse truly distinguishable. Elegant, spacious and bright, the house is perfectly suited to entertaining on a large scale, with ceiling heights in the main reception rooms reaching 14'5" (4.4 m).

Meticulously restored and beautifully modernised for 21st century living, the house includes a wide range of amenities that includes a private garage, six-person passenger lift to all floors, air conditioning to all rooms, state-of-the-art security, staff accommodation, 24 hour concierge and an impressive spa area that includes a 10 metre swimming pool, sauna, gym, bar and treatment room.



HISTORY

No.6 Buckingham Gate stands in the former grounds of the Jacobean mansion, Tart Hall. In 1633 the Hall was purchased by Thomas Howard, the Earl of Arundel, for his wife, Lady Alethea, as a pleasant retreat from Arundel House, near the Strand.

By the mid-19th century, a newly laid road 'Buckingham Gate' first appeared on the ordnance survey map of 1869, at the same time as the Duchy of Cornwall office, accompanied by the legend 'Site of Tart Hall.'







REMARKABLE RESTORATION

From the polished and panelled entrance doors, to the new, natural slate roof, the façade of Buckingham Gate has been completely renovated.

Previous extensions to the building have been removed and new features added: full height, south-facing windows; bi-folding doors with Juliette balconies; a series of terraces and outdoor amenity spaces; and a reworked, south-facing rear aspect to allow for more space and light.

Inside, the original Regency-style rooms have been meticulously restored: each cornice, ceiling rose and wall moulding has been made perfect once more, along with the staircases, French windows, shutters and doors.

The grand fireplaces of the formal rooms have either been restored or replaced with the utmost attention to detail and authenticity.

Designed in keeping with its significant size and stature by Veere Grenney, one of the most talented and exclusive interior designers working in London today. Veere's creations are known for their simple elegance, holding comfort at their core. At No.6 Buckingham Gate, he has created a truly remarkable family home.







ELEVATION



Fourth Floor
Three Bedrooms
Ceiling Height: 7'9 10" / 2.4 m.

Third Floor
Two Bedrooms
Ceiling Height: 8'9" / 2.7 m.

Second Floor
Master Bedroom
Ceiling Height: 10'6" / 3.2 m.

First Floor
Living & Entertaining, Drawing Room, Study
Ceiling Height: 14'5" / 4.4 m.

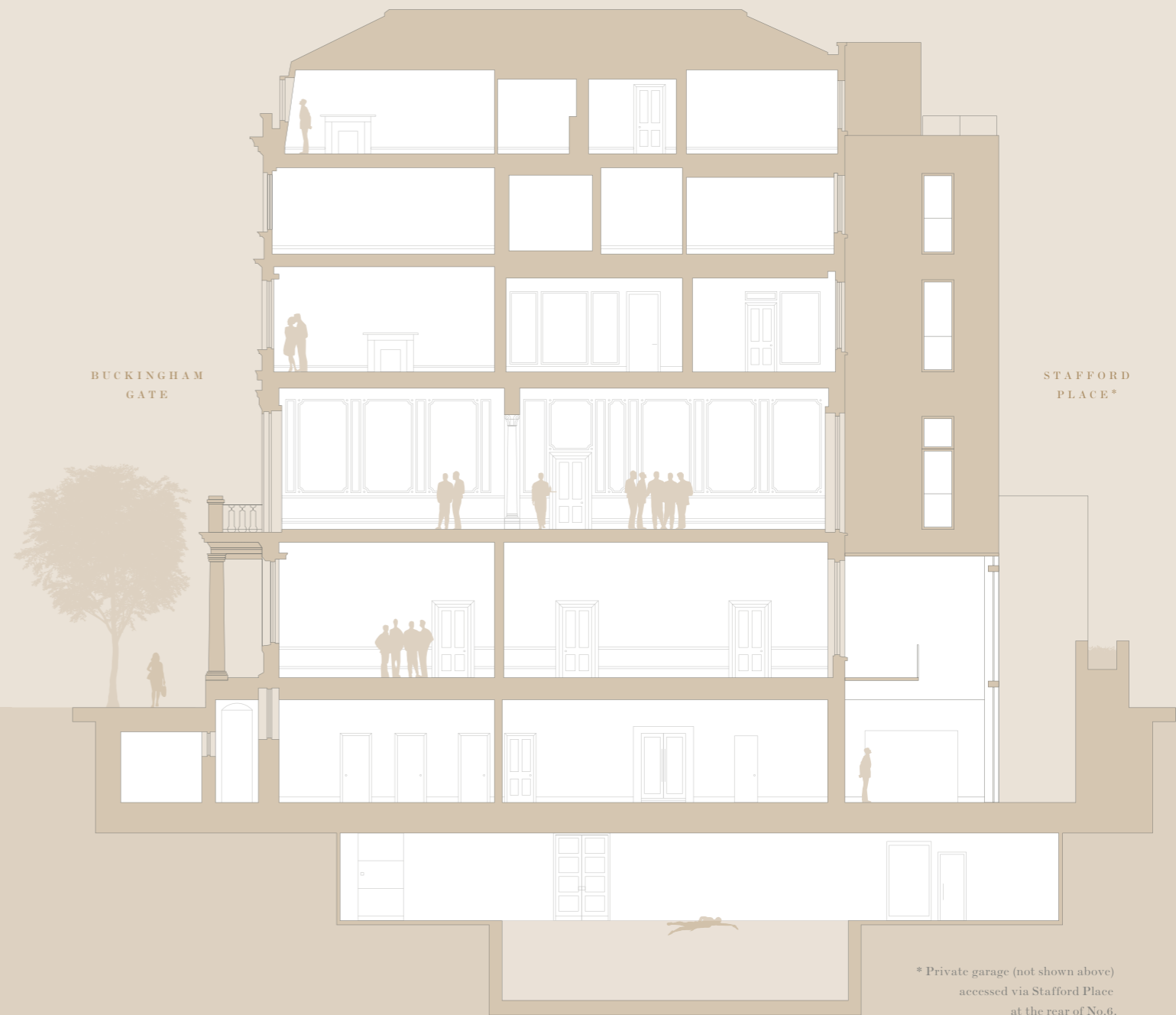
Raised Ground Floor
Entrance Hall, Formal Dining, Library & Living
Ceiling Height: 12'9" / 3.9 m.

Lower Ground Floor
Kitchen, Media Room, Staff Bedrooms, Laundry
Ceiling Height: 9'10" / 3.0 m.

Spa Level
Gym, Pool, Sauna, Treatment Room
Ceiling Height: 8'6" / 2.6 m.

Width: 33'10" / 10.3 m.

* Measurements throughout this book have been rounded to the nearest foot, inch, metre or tenth of a metre, as appropriate.



Length: 83' / 25.3 m.

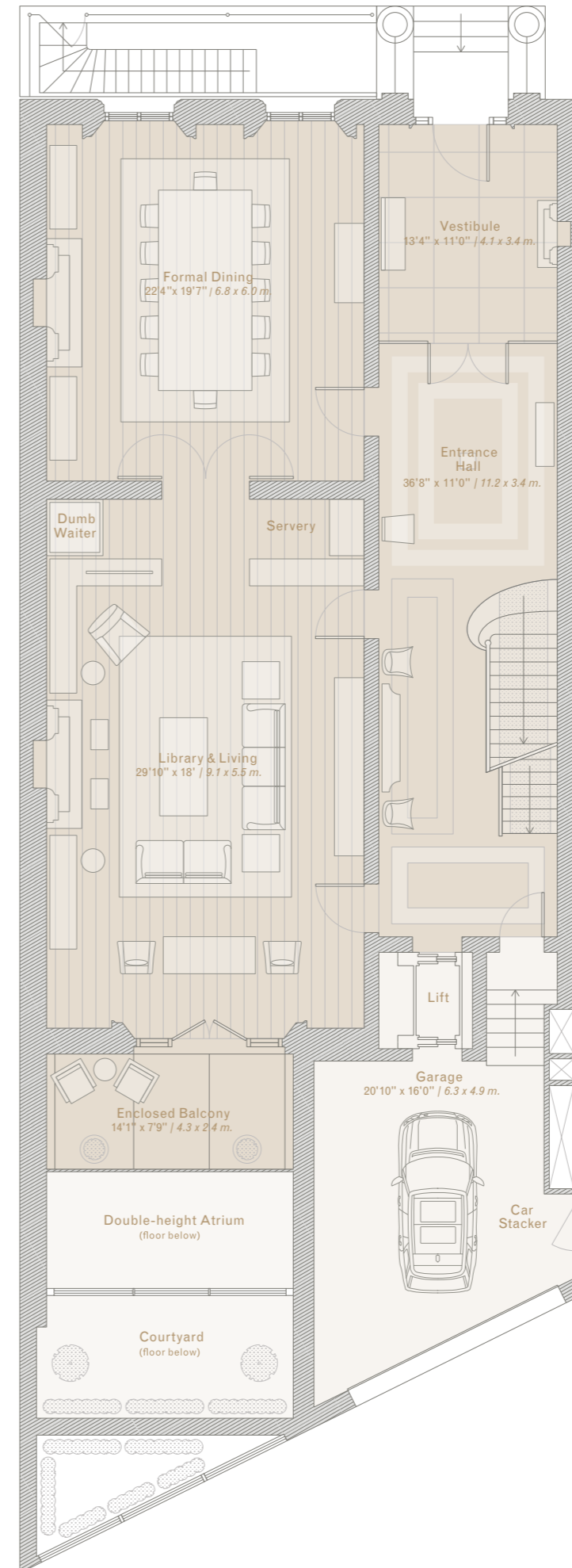
* Private garage (not shown above) accessed via Stafford Place at the rear of No.6.

FLOOR PLANS

It is the vast proportions of No.6, Buckingham Gate that set it apart from its comparable set: its ample c.34 ft (10.3 m) width and generous 15,845 sq ft (1,472 sq m) of internal floor area, combined with extraordinary ceiling heights and large proportioned rooms, create a remarkable sense of volume and space.

Amenities

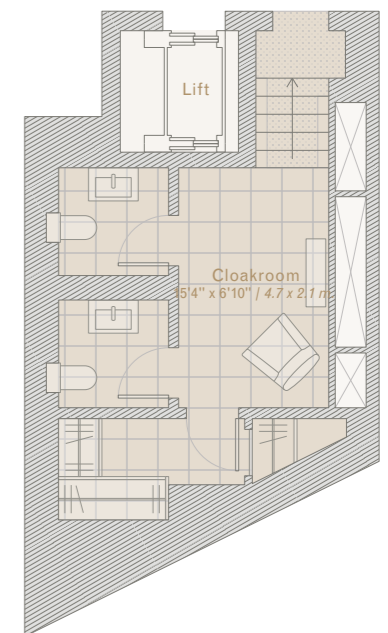
- Lift access
- Gymnasium
- Swimming pool
- Bar
- Treatment room
- Sauna
- Two changing rooms
- Garage with car stacker
- Two balconies
- Double-height Atrium
- Courtyard
- Two terraces



RAISED GROUND FLOOR

Accommodation

- Vestibule
- Entrance hall
- Formal dining room
- Library/living room
- Balcony
- Cloakroom
- 2,224 sqft

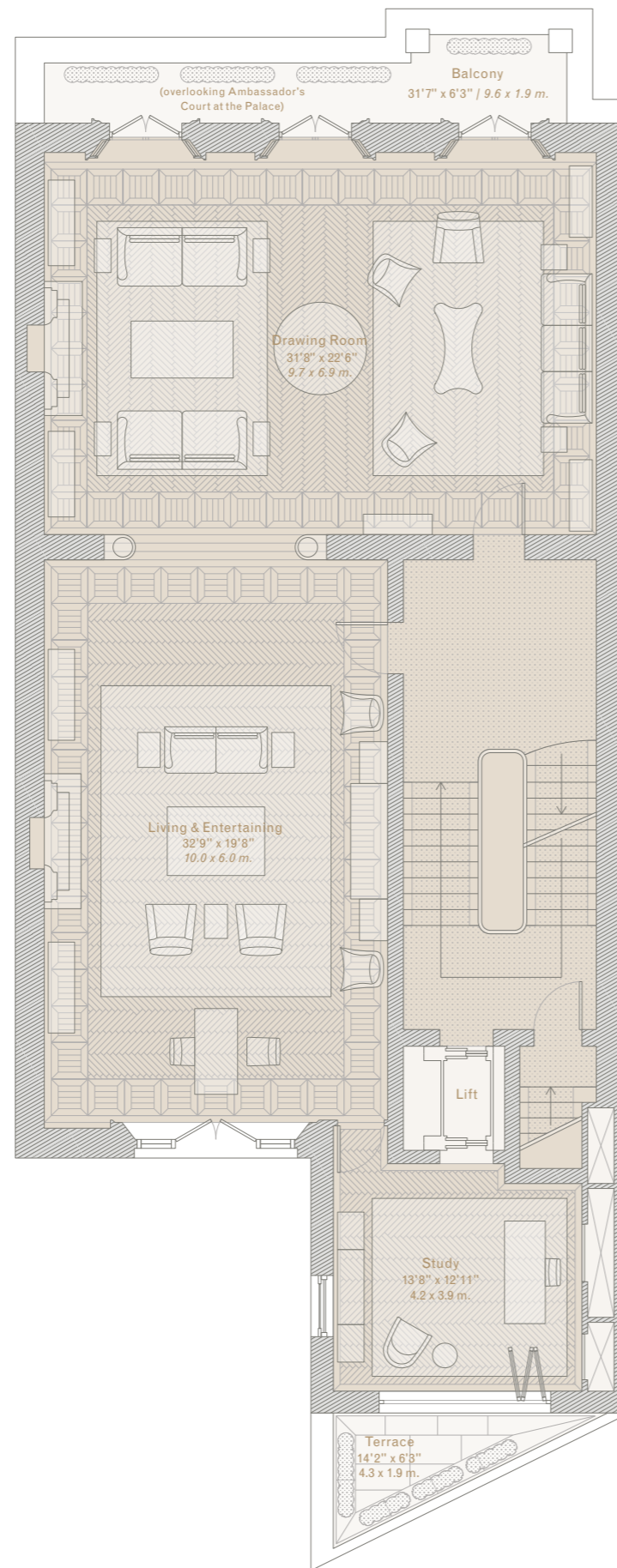


Private door to adjoining parking spaces

FIRST FLOOR

Accommodation

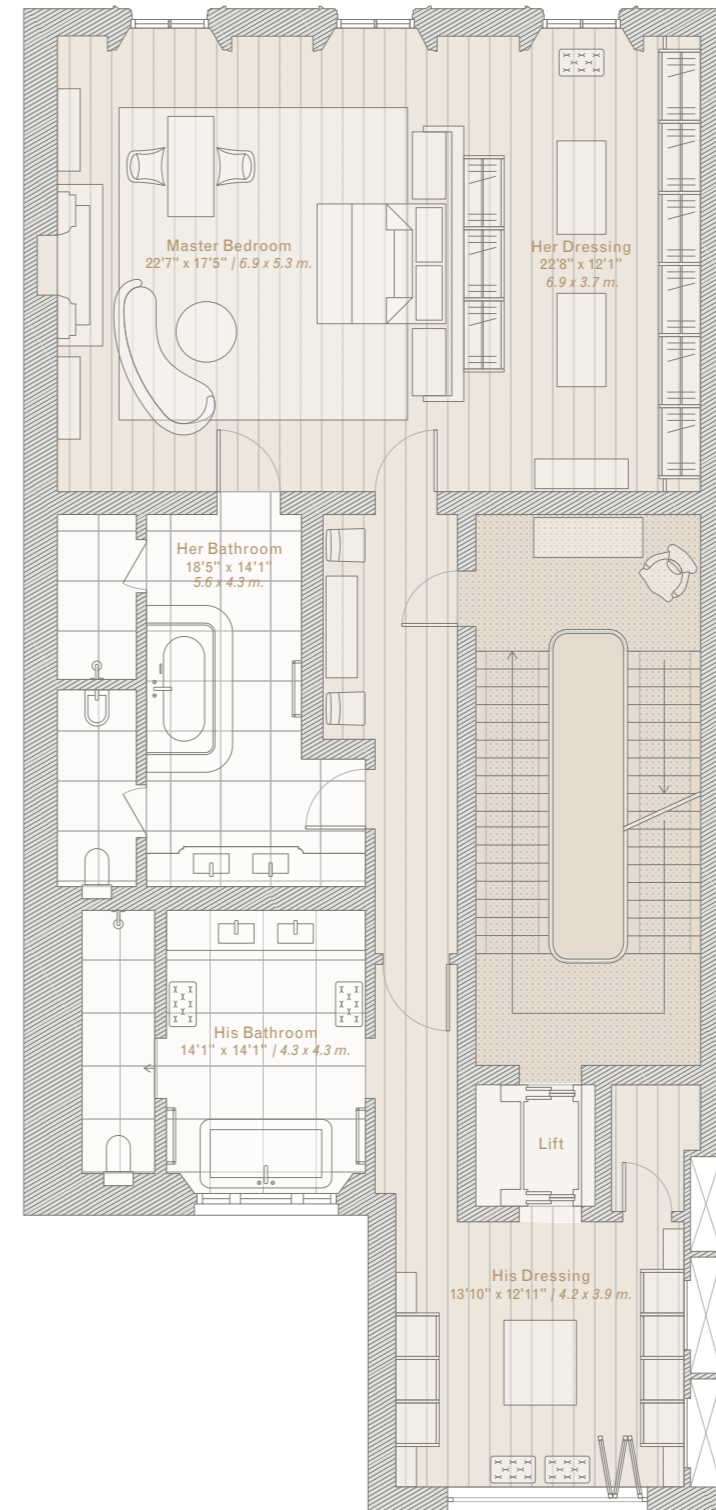
- Drawing room
- Living & Entertaining room
- Study
- Terrace
- Balcony
- 2,019 sqft



SECOND FLOOR

Accommodation

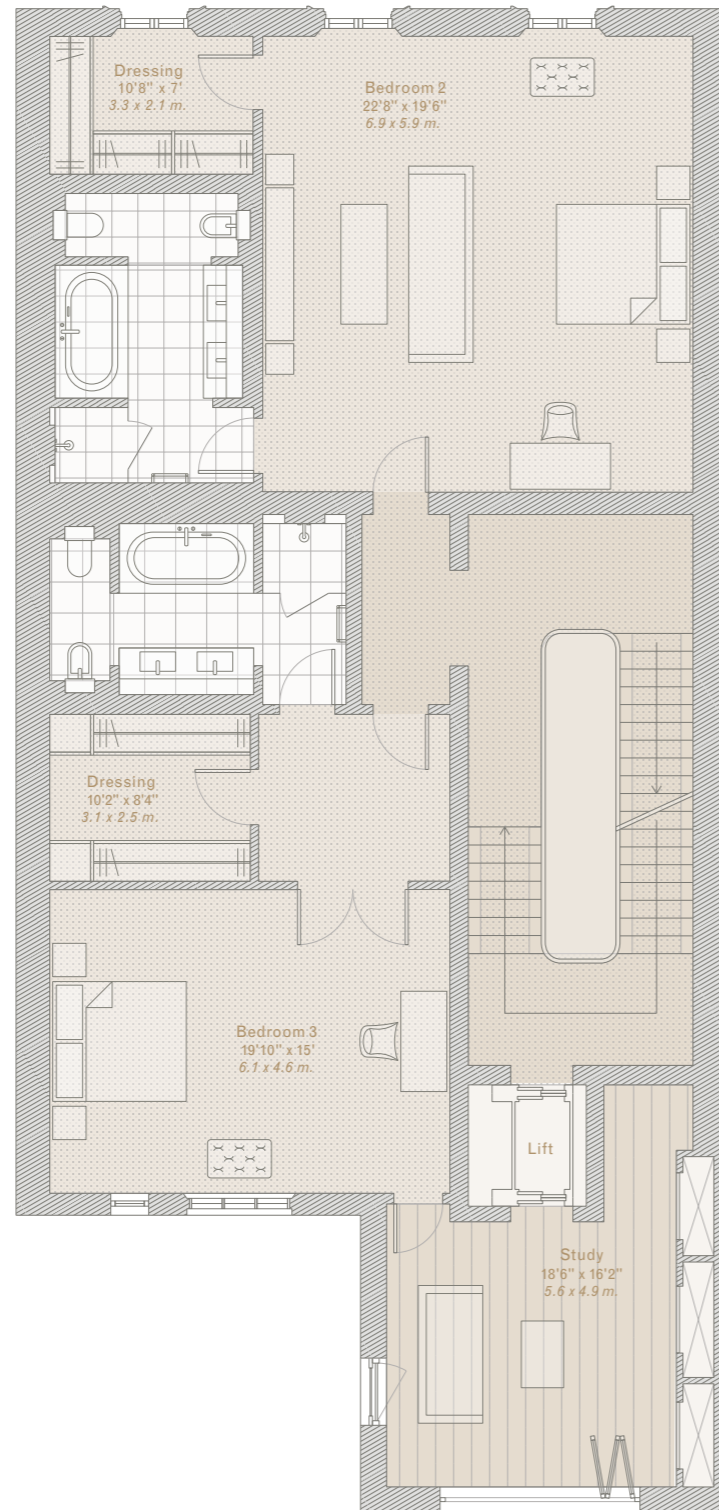
- Master bedroom
- His & Hers dressing rooms
- His & Hers bathrooms
- 1,994 sqft



THIRD FLOOR

Accommodation

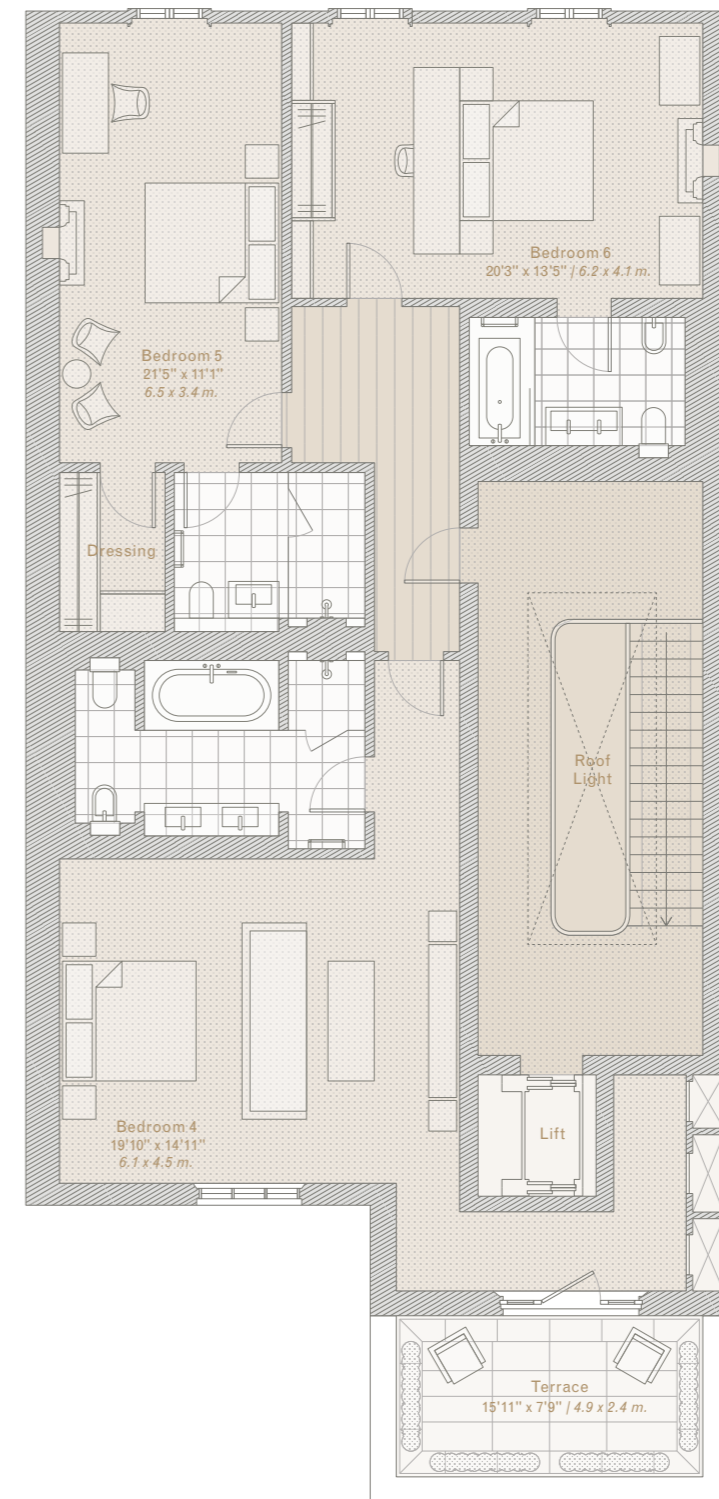
- Two Bedrooms
 - Two Dressing rooms
 - Two Ensuite bathrooms
 - Study
 - 2,007 sqft
-



FOURTH FLOOR

Accommodation

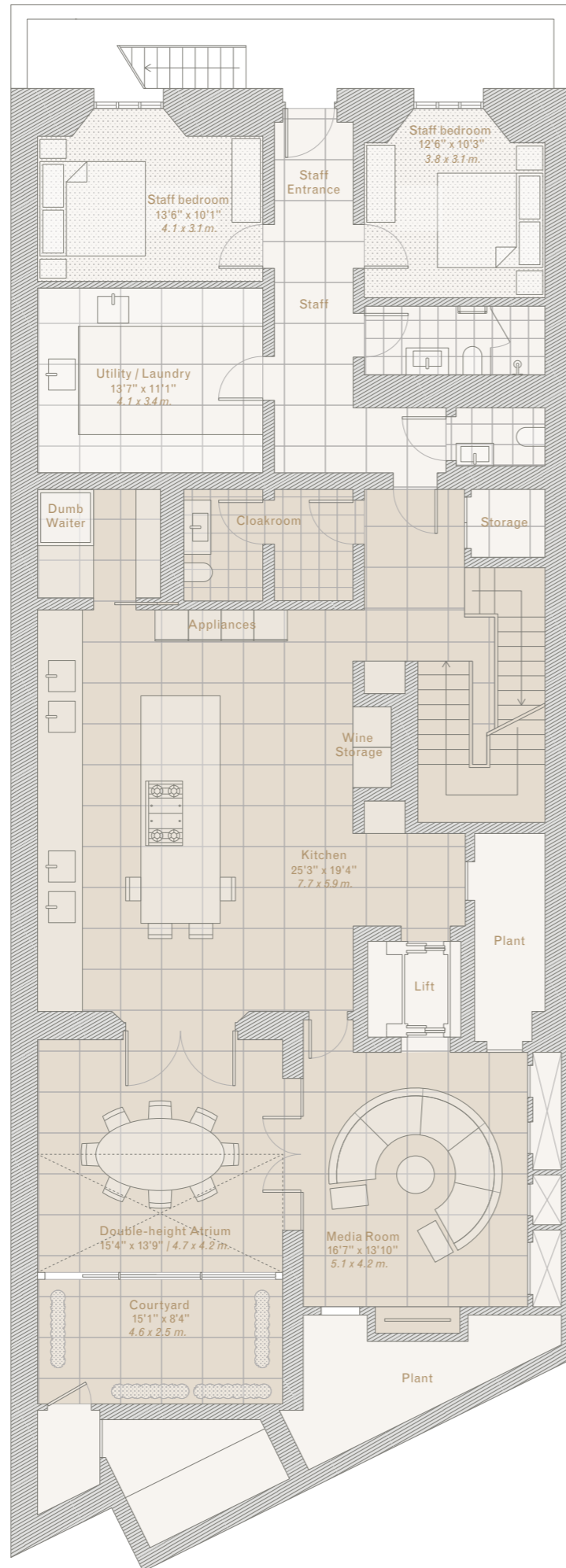
- Two Bedrooms
 - Two Bathrooms
 - Shower room
 - Dressing room
 - Terrace
 - 1,876 sqft
-



LOWER GROUND FLOOR

Accommodation

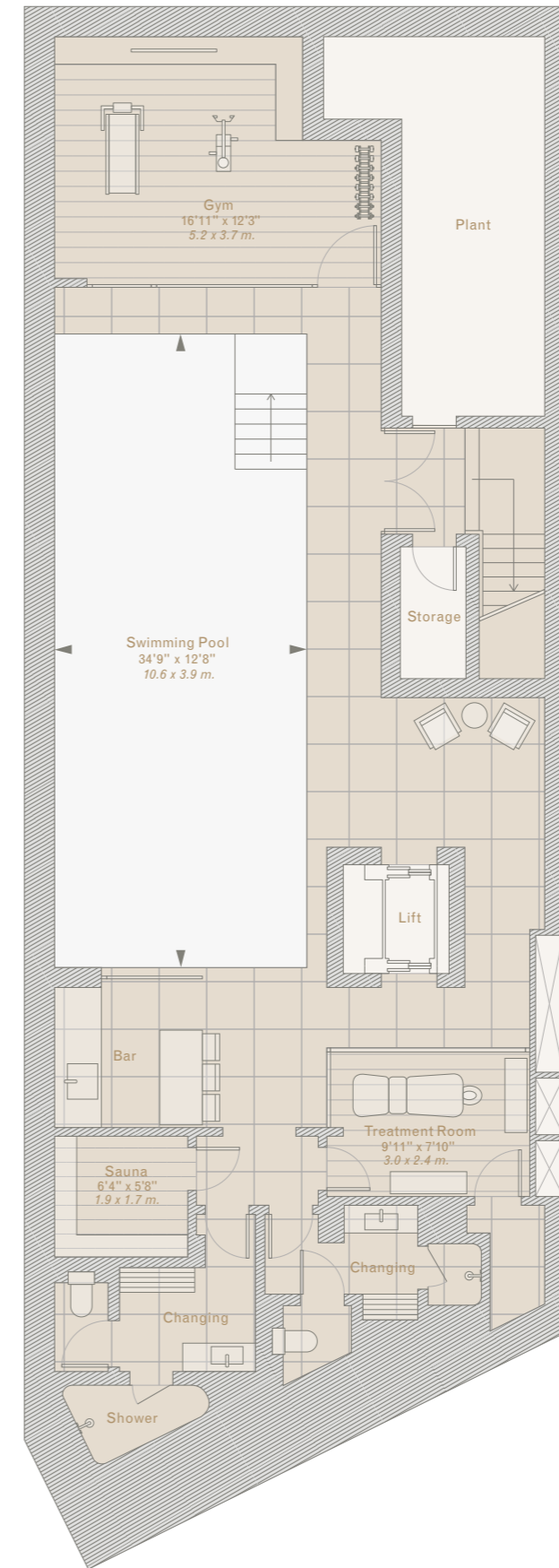
- Kitchen
- Double high atrium
- Media room
- Cloakroom
- Utility/laundry room
- Two Staff rooms
- Courtyard
- 2,347 sqft

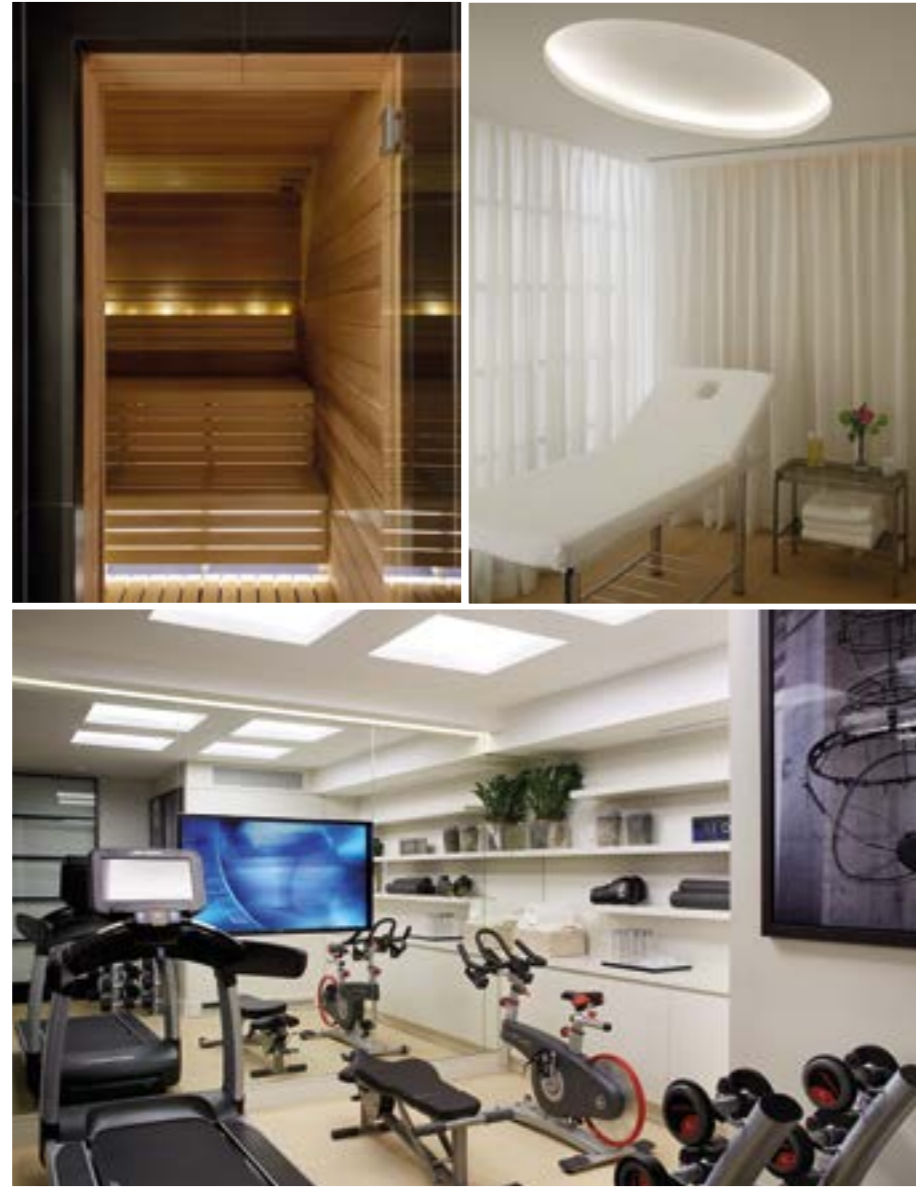


SPA LEVEL

Accommodation

- Swimming pool
- Sauna
- Treatment room
- Two Changing rooms
- Gym
- Bar area
- 1,940 sqft









Price on application

Tenure Freehold

Service charge There is an annual service charge for the concierge and security.

The agents, their clients and any joint agents give notice that:1. They are not authorised to make or give any representations or warranties in relation to the property either here or elsewhere, either on their own behalf or on behalf of their client or otherwise. They assume no responsibility for any statement that may be made in these particulars.

These particulars do not form part of any offer or contract and must not be relied upon as statements or representations of fact. 2. Any areas, measurements or distances are approximate. The text, photographs and plans are for guidance only and are not necessarily comprehensive.

It should not be assumed that the property has all necessary planning, building regulation or other consents and the agents, have tested any services, equipment or facilities. Purchasers must satisfy themselves by inspection or otherwise. April 2017.

No part of this book may be reproduced in any form without prior permission.



THE BUCKINGHAM