



Marylebone Lane, London W1U

Guide price £5,285,000 Leasehold







Description

Modern design anchored with classic detail. Marylebone Square is the perfect home for those looking for high-quality living in a comfortable environment. Refined, elegant and intuitively designed, the apartments and penthouses are generously spacious yet warmly intimate. Floor-to-ceiling windows and glass sliding doors mean the living space is always aglow with natural light - and the airy, open-plan layout makes it an ideal place for get-togethers.

- Two bedrooms
- Two bathrooms
- Study
- Balcony/Terrace
- First Floor

Floorplan

1,399 sq ft | 130 sq m

2 Bedroom Apartment & Study Mirrored

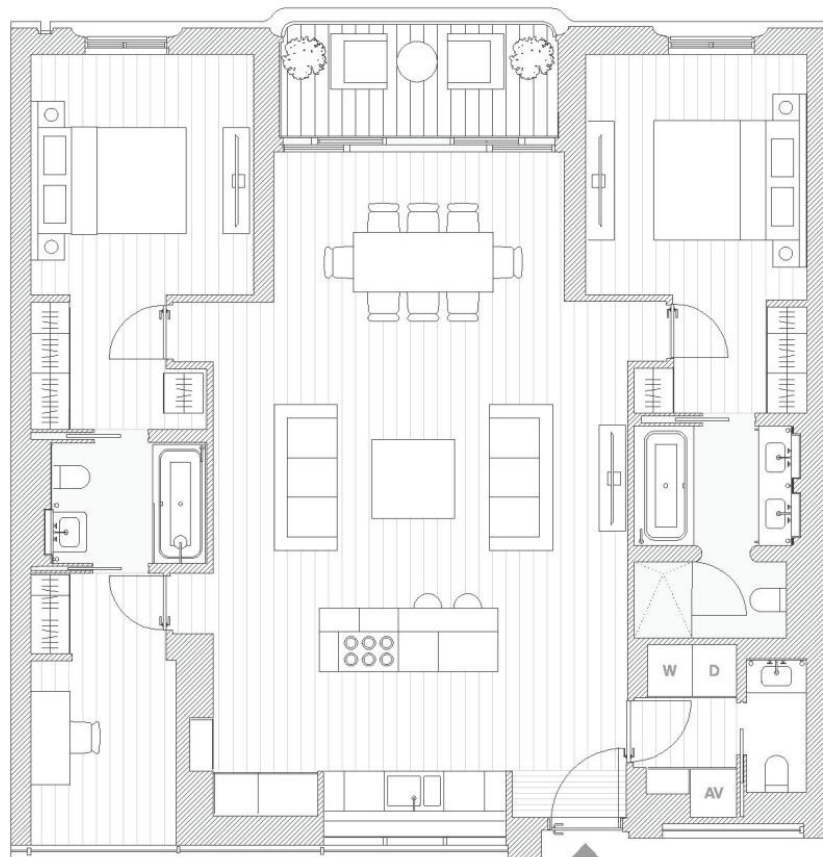
FLOOR PLANS



Floors 1, 2 & 3



Living/kitchen/dining	6.3m x 10.0m
Master bedroom	3.3m x 3.9m
Master bathroom	2.4m x 3.2m
Bedroom 2	3.3m x 3.9m
Ensuite 2	2.3m x 1.8m
Study	2.1m x 3.9m
Guest bathroom	0.9m x 2.0m
Total*	130m ²
	1,399sqft
Balcony*	7.0m ²
	64sqft



*All floor plans are draft and subject to change

Mayfair and Marylebone
13a St George Street,
London W1S 2FQ
+44 207 399 5550
mayfair@jll.com

Urban living, your way.

jll.co.uk/residential

© 2019 Jones Lang LaSalle IP, Inc. All rights reserved. All information contained herein is from sources deemed reliable; however, no representation or warranty is made to the accuracy thereof.

