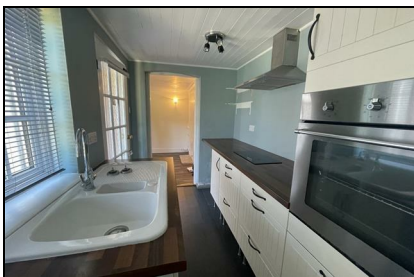


Boyes Lane
Canterbury
CT3 1PD

£1,100 PCM

Finn's
82 Castle Street
Canterbury
CT1 2QD
t: 01227 452111
e: canterbury@finns.co.uk
www.finns.co.uk



A charming 3 bedroom terraced cottage situated in the delightful village of Goodnestone with stunning views over open countryside. The property is situated close to Wingham and just seven miles from Canterbury and five miles from Sandwich. This lovely mid terraced cottage offers a cottage style kitchen , attractive living and dining area and a downstairs bathroom. There are three good sized bedrooms upstairs with the main bedroom overlooking country lanes and fields . Off street parking is available for one or two small cars. This lovely cottage is ideal for those looking to move to peaceful country living. The property has calor gas central heating . One small pet may be considered.

- Charming Mid Terraced 3 Bedroom Cottage
- Downstairs Bathroom
- Beautiful Views Over Open Countryside
- EPC E
- Deposit £1265
- Dover District Council Band C
- One Small Pet Considered
- Available 22 July 2024
- Calor Gas Central Heating
- Parking for Two Cars



Energy Efficiency Rating		
	Current	Potential
<i>Very energy efficient - lower running costs</i>		
(92 plus) A		
(81-91) B		
(69-80) C		66
(55-68) D		
(39-54) E	39	
(21-38) F		
(1-20) G		
<i>Not energy efficient - higher running costs</i>		
England & Wales	EU Directive 2002/91/EC	

Viewing: By appointment through Finn's, Canterbury
Telephone: 01227 452111

Council Tax: C

Date: These particulars were prepared on: 8th July 2024

Agent's Note: Wherever appliances or services, fixtures or fittings have been mentioned in these particulars they have not been tested by us. Measurements should not be relied upon. Unless specifically referred to above all fitted carpets, curtains, fixtures and fittings and garden outbuildings and ornaments are excluded from the sale. None of the statements in these particulars are to be relied upon as statements or representatives of fact. Photographs are for guidance only and do not imply items shown are included in the sale - some aspects may have changed since they were taken. No person in the employment of Finn's has authority to give any representation or warranty in relation to this property.

FINN'S CANTERBURY
82 Castle Street
Canterbury
Kent CT1 2QD
Lettings: 01227 452111

FINN'S SANDWICH
2 Market Street
Sandwich
Kent CT13 9DA
Lettings: 01304 614471

FINN'S ST NICHOLAS AT WADE
The Packhouse
Wantsum Way
St Nicholas at Wade
Kent CT7 0NE
01843 848320

